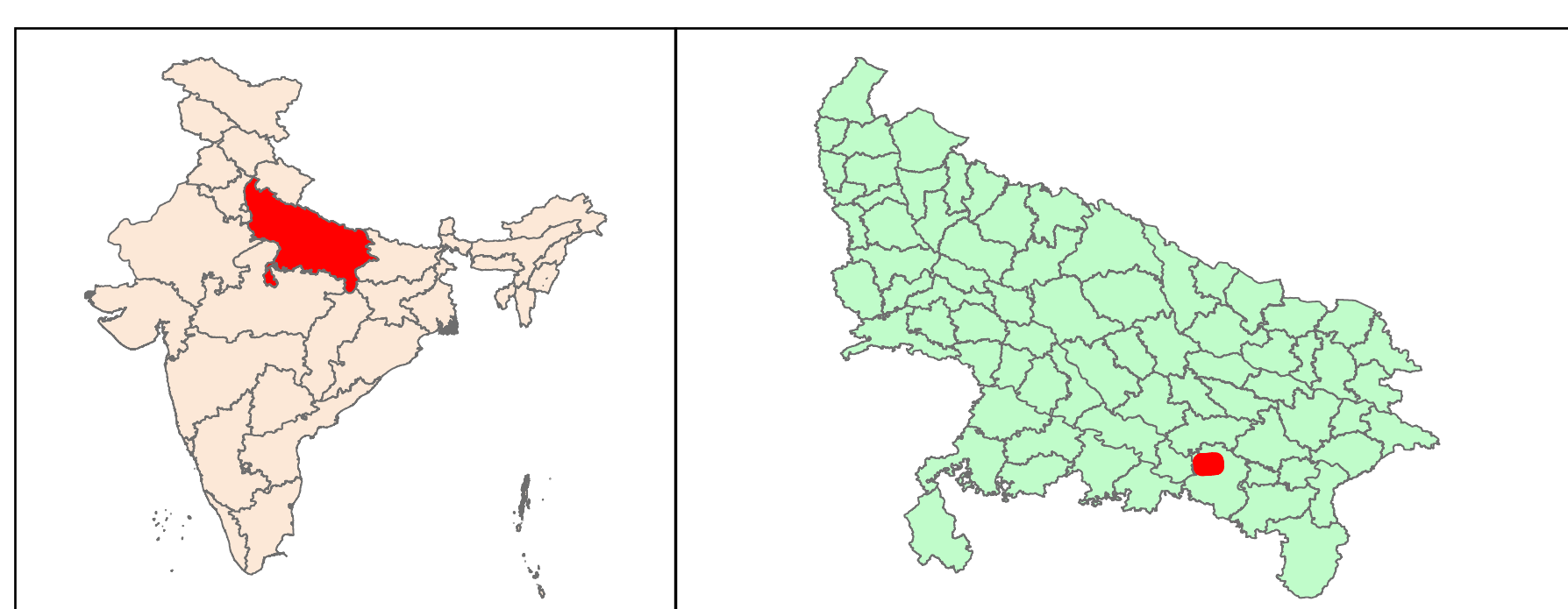
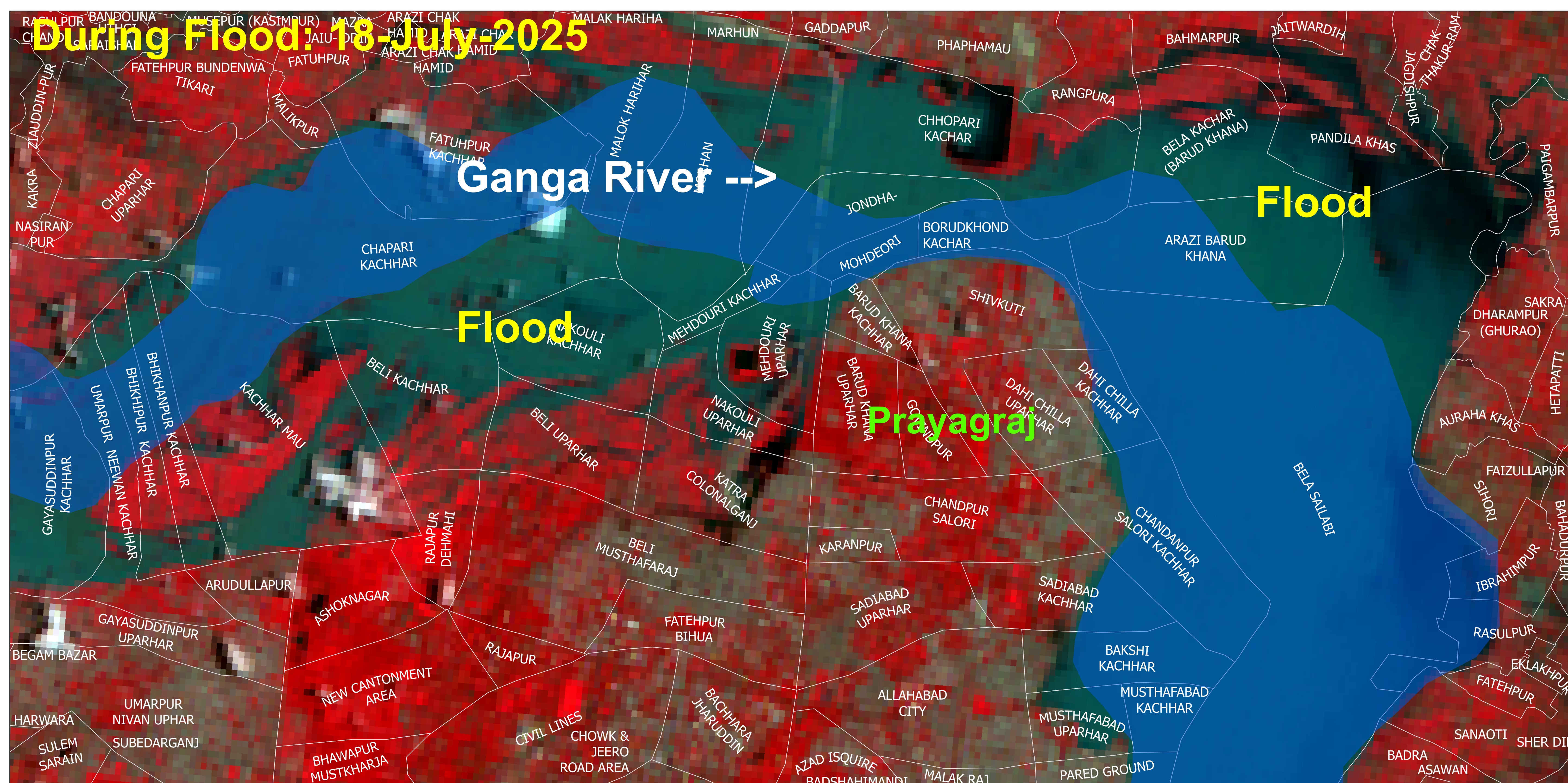
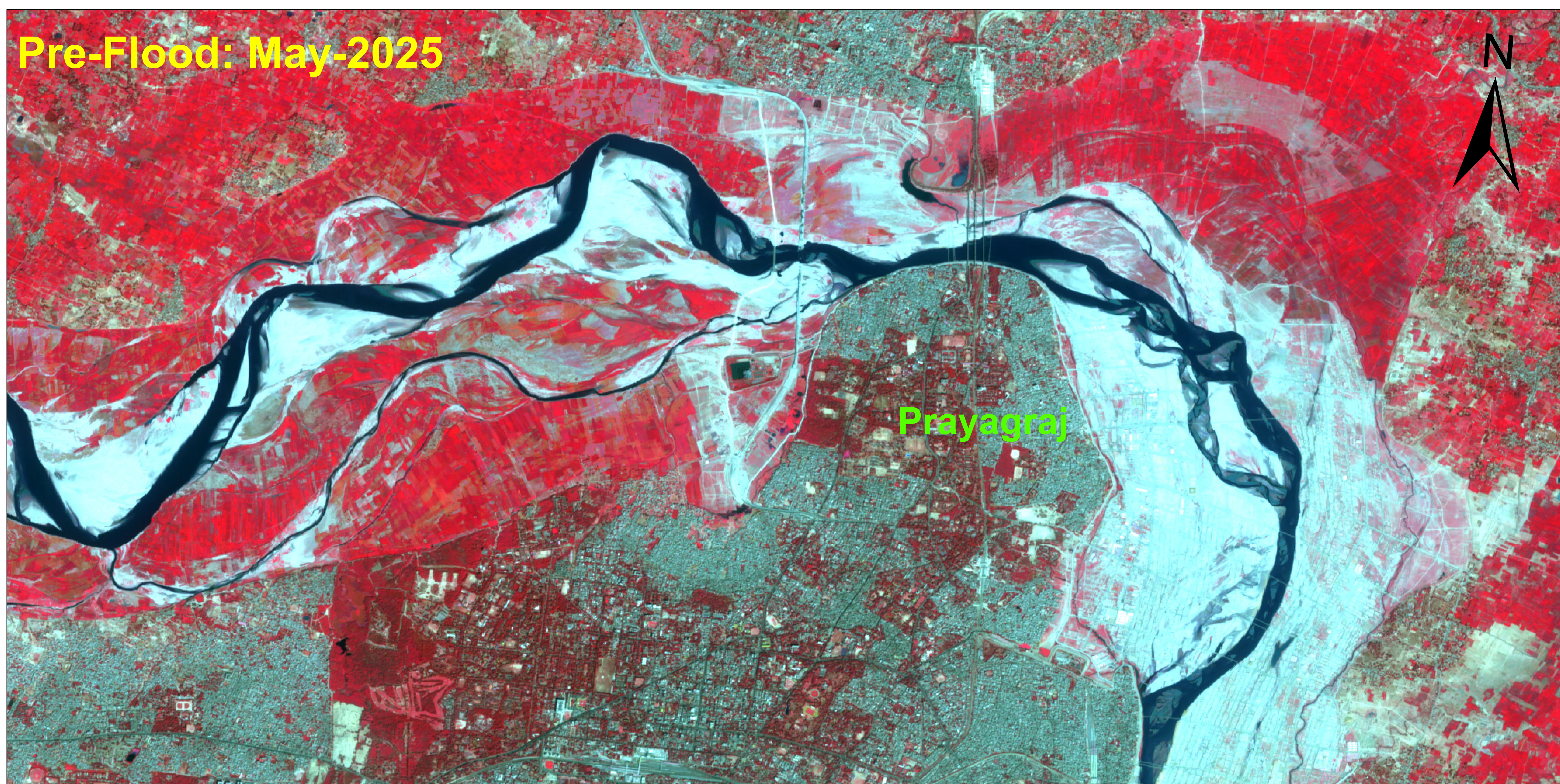


## View of Satellite Image in the surroundings of Prayagraj, Uttar Pradesh

Resourcesat-2A AWiFS Image of 18-07-2025 (1000 Hrs)

**MAP ID : 2025/FL/UP/VAP/3/18072025**

**Date of Issue: 22-07-2025**



Note : The Map shows the satellite image overlaid with village boundaries . This is a rapid mode of interpretation of the image. Not verified on the ground.

A horizontal number line with tick marks at 0, 1, 2, and 4. The word "Kilometers" is written below the line. The segment between 1 and 2 is highlighted with a red line.

## Legend

- Village Boundary  
Reference River/ Waterbody

Disaster Management Support Group  
National Remote Sensing Centre, ISRO  
Dept. of Space, Govt. of India  
Hyderabad- 500 037  
E-Mail: [flood@nrsc.gov.in](mailto:flood@nrsc.gov.in)  
[www.nrsc.gov.in](http://www.nrsc.gov.in)