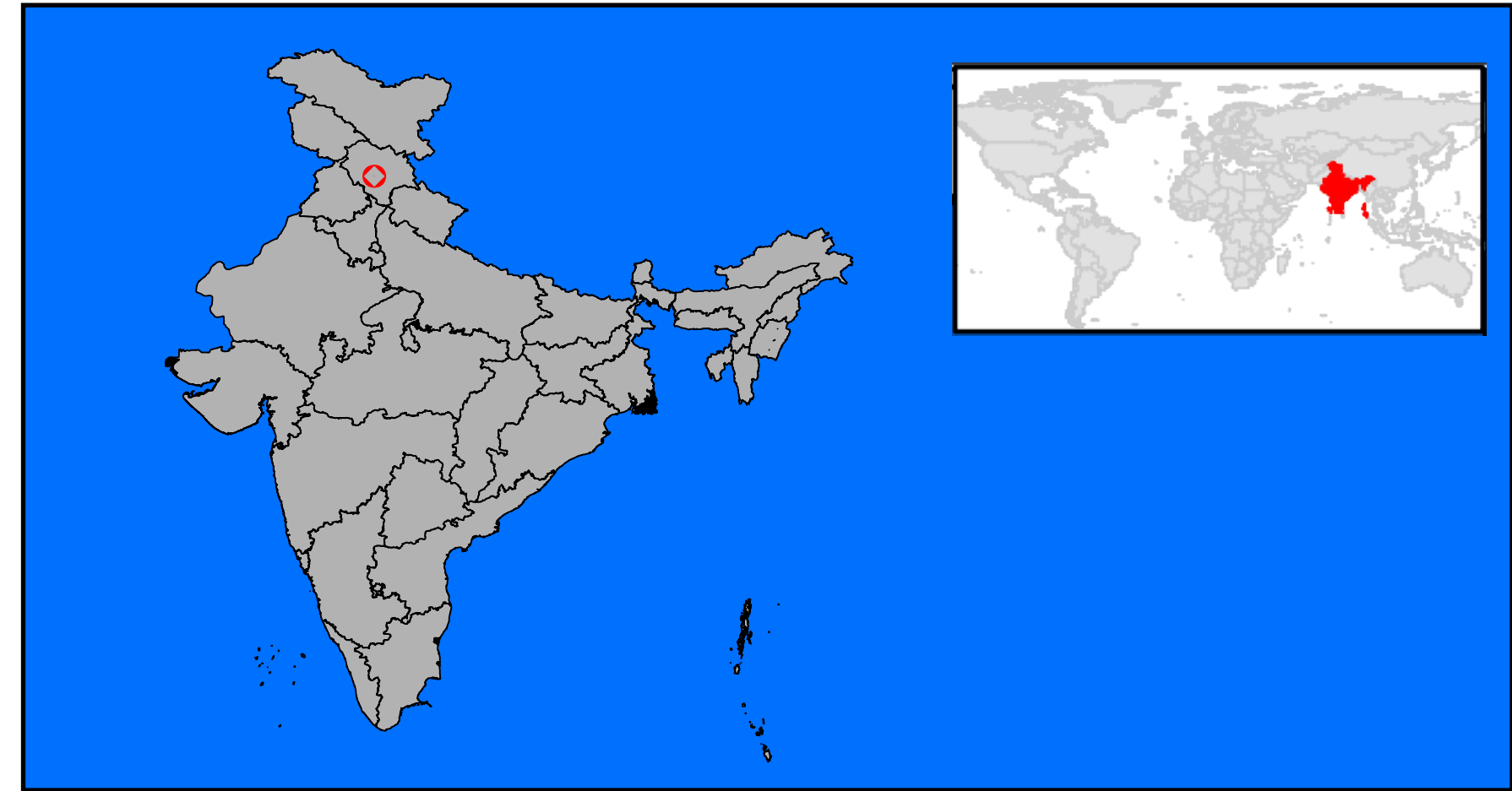


Pre-Post Satellite Images over Pandoh Dam, Pandoh, Mandi District, Himachal Pradesh, India

Location Diagram

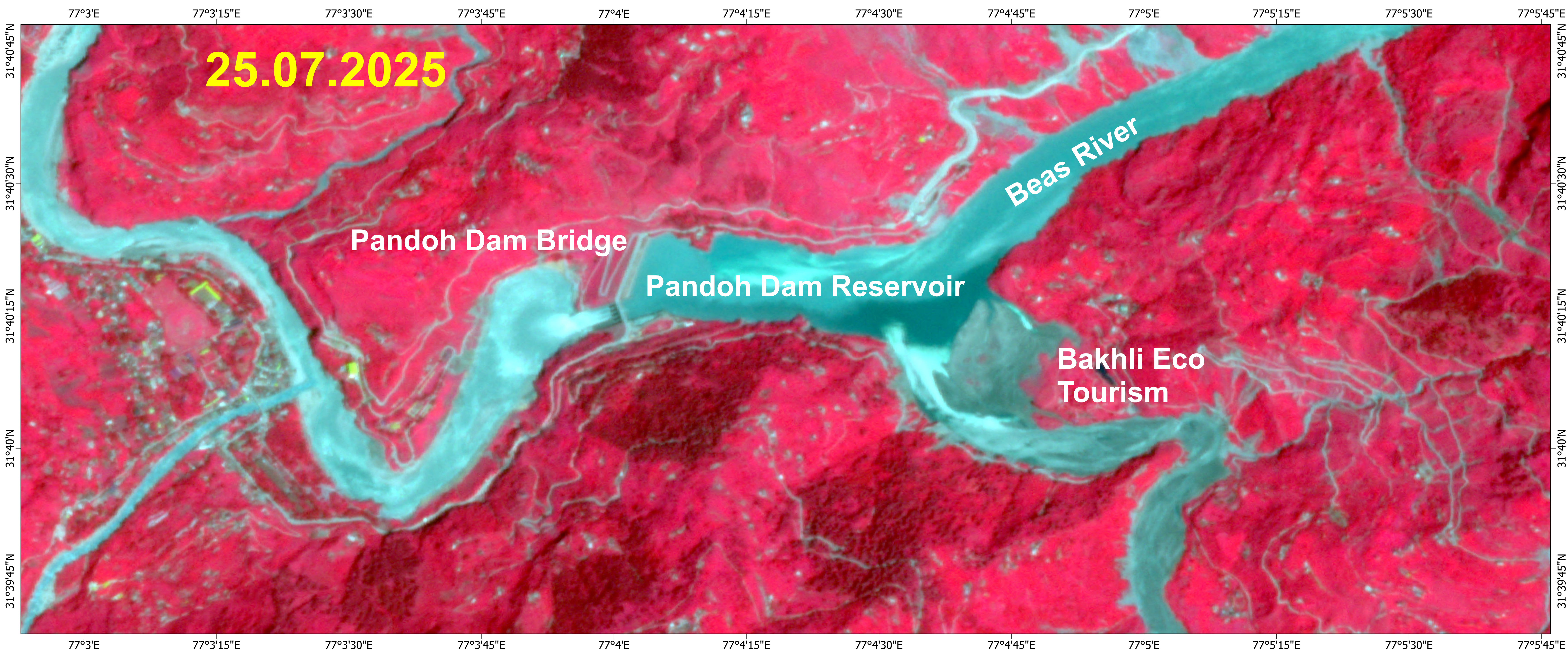
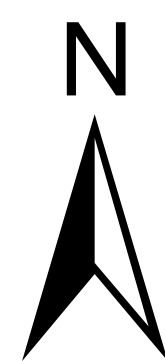


Cartographic Information

Local Projection : WGS 1984 UTM Zone 43N Datum : WGS1984
Geographic projection : Lat / Lon (DMS), Datum:WGS 84

Scale : 1:6000

0 0.15 0.3 0.6 Kilometers



Interpretation

Satellite image acquired on 25th July, 2025 after the flood event. No significant changes are observed in the River channel,clearly indicating the stable river banks at this location of Pandoh Dam Reservoir, Mandi District, Himachal Pradesh.

Data Source

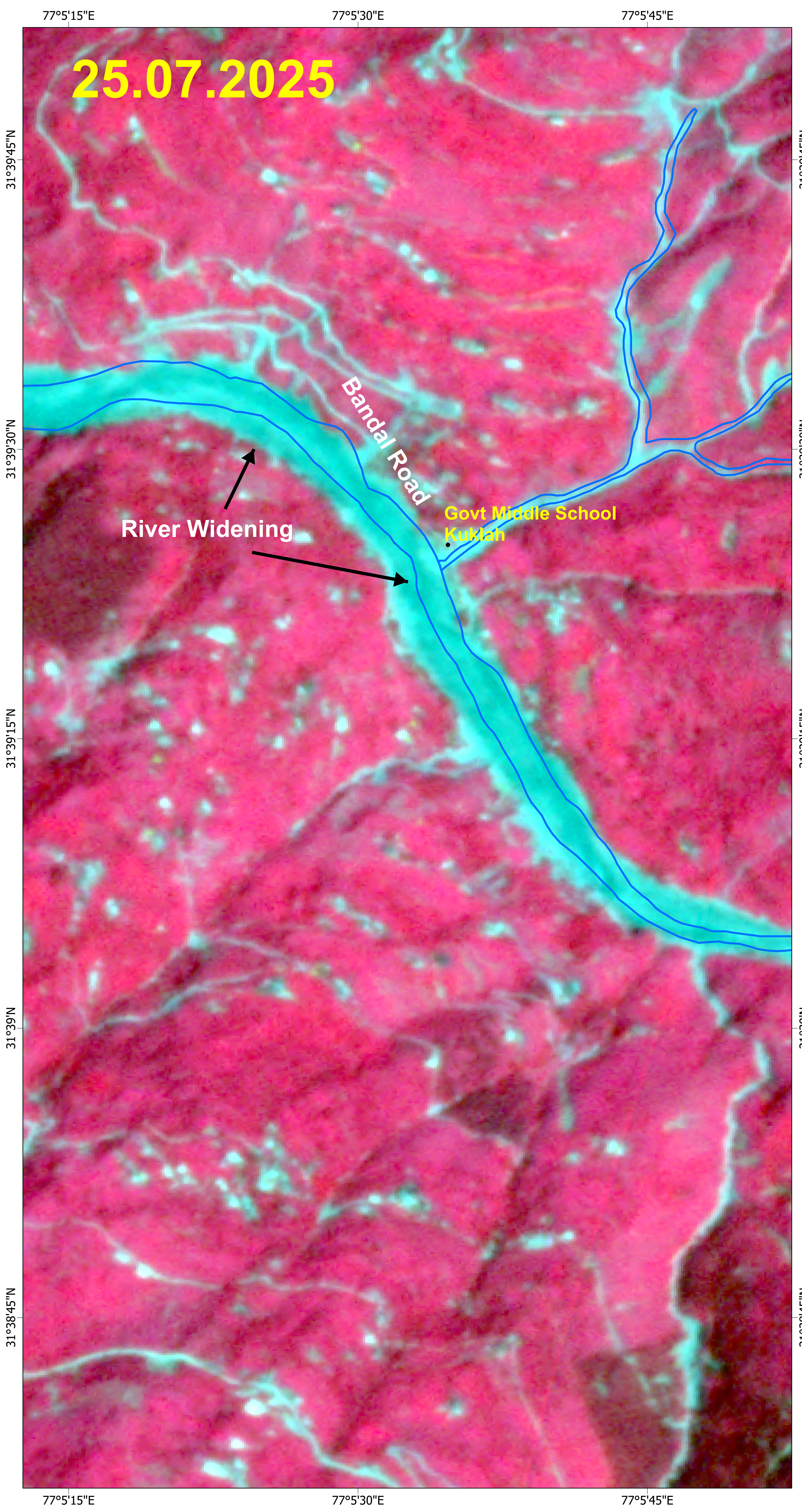
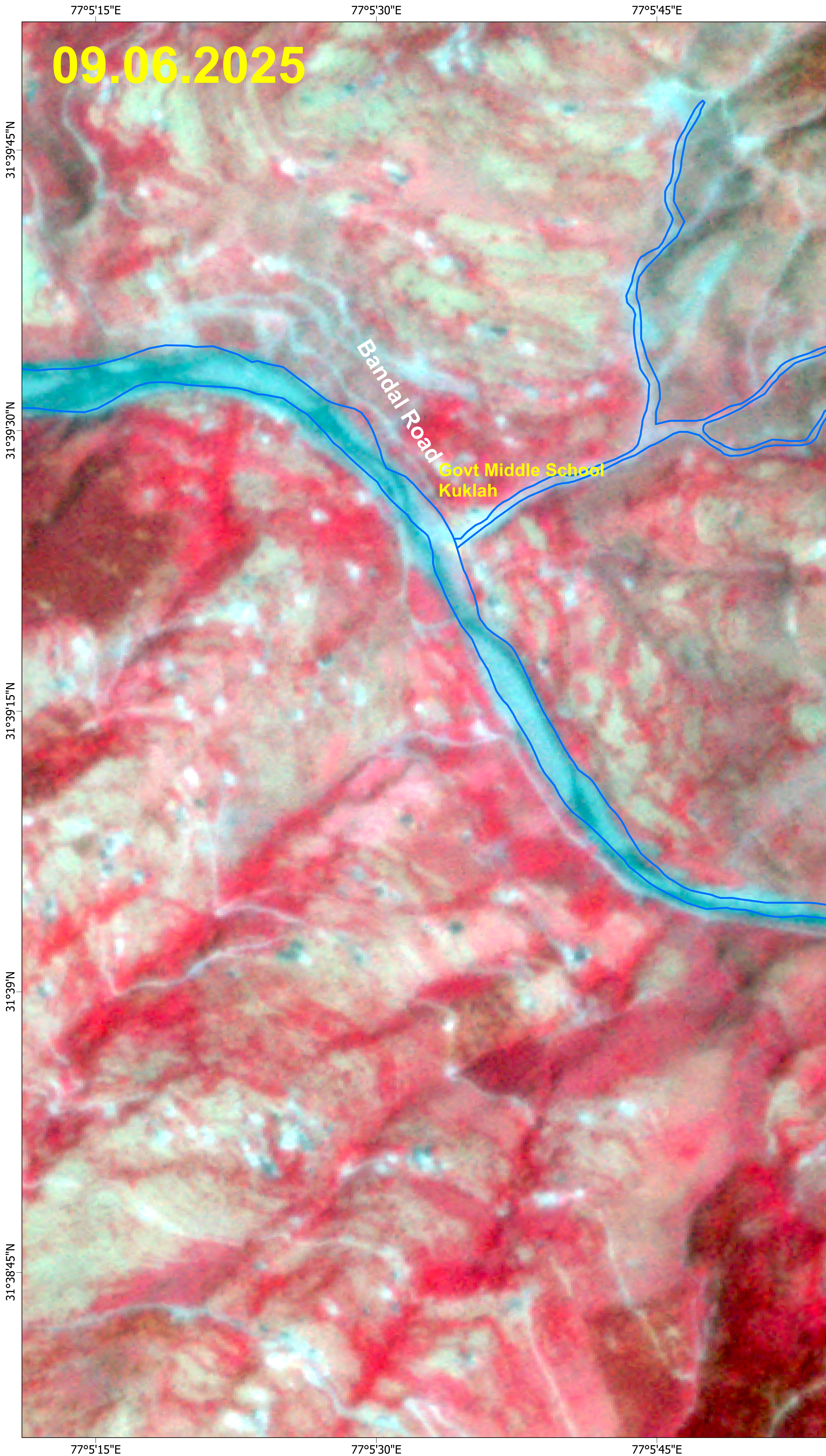
Pre Event Image : PlanetScope, 9th June 2025
Post Event : PlanetScope, 25th July 2025

Frame Work

The best effort rapid mapping product is elaborated within a very short time frame, optimizing the available material, and has been quality checked as per NRSC/ISRO procedures. All geographic information has limitations due to scale, resolution, date and interpretation of the original source material. No liability concerning the content or the use thereof is assured by the producer.
Note: When publishing this map as part of any report, source may be indicated as ' NRSC (2025) - Flood Inundated areas in Part of Himachal Pradesh State (as on 25.07.2025)' , Map no : 2025/FL/HP/2/25072025, NRSC/ISRO, Hyderabad.

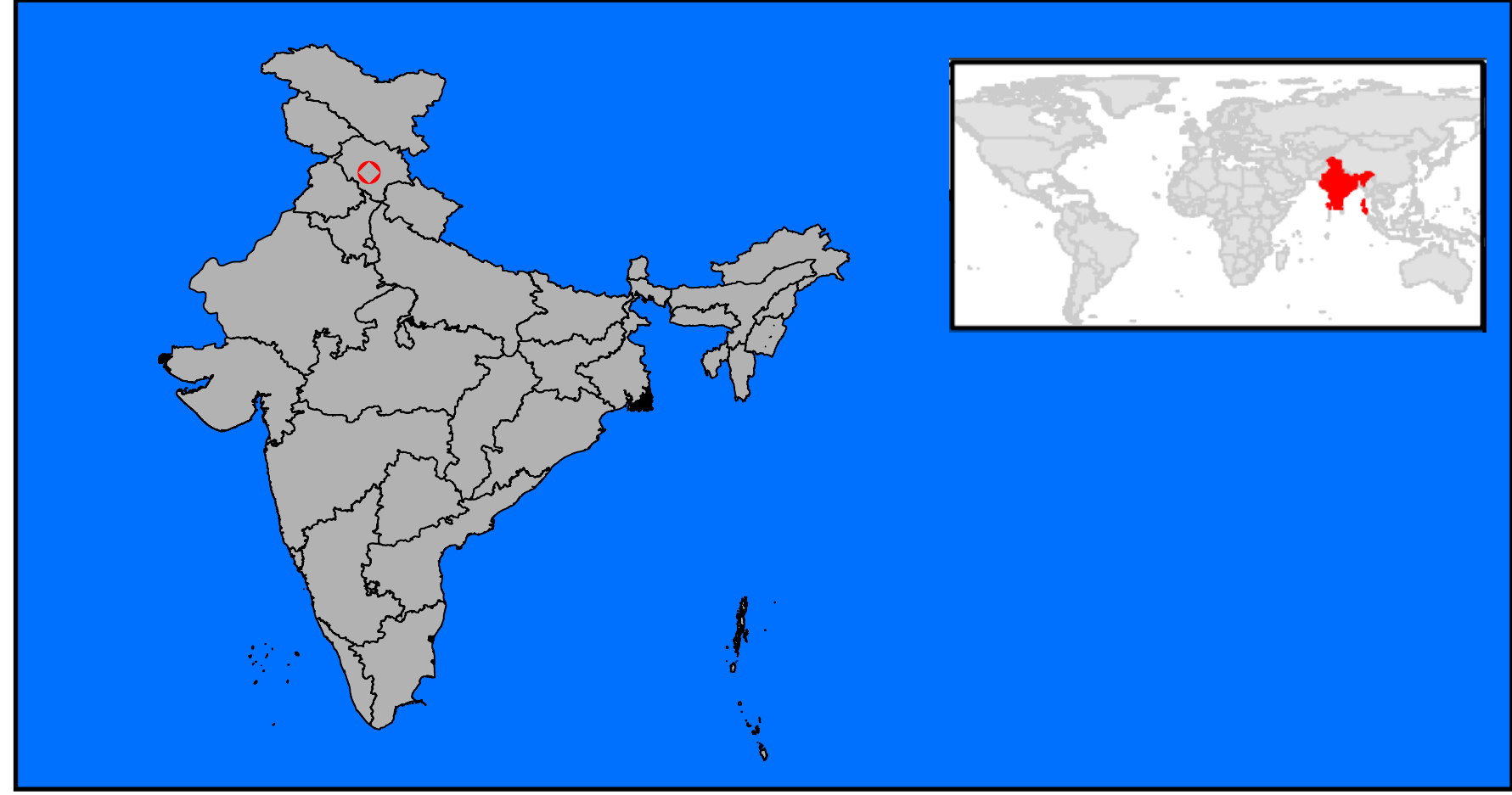
E-mail: flood@nrs.gov.in





**Pre-Post Satellite Images over Kuklah,
Mandi District, Himachal Pradesh, India**

Location Diagram

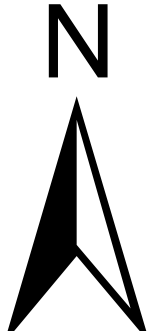


Cartographic Information

Local Projection : WGS 1984 UTM Zone 43N Datum : WGS1984
Geographic projection : Lat / Lon (DMS), Datum:WGS 84

Scale : 1:3000

0 0.07 0.15 0.3 Kilometers



Legend

Stream

Interpretation

Satellite image acquired on 25th July, 2025 after the flood event .Post Image clearly indicates widening of the river bank in the location around Kuklah, Mandi District, Himachal Pradesh.

Data Source

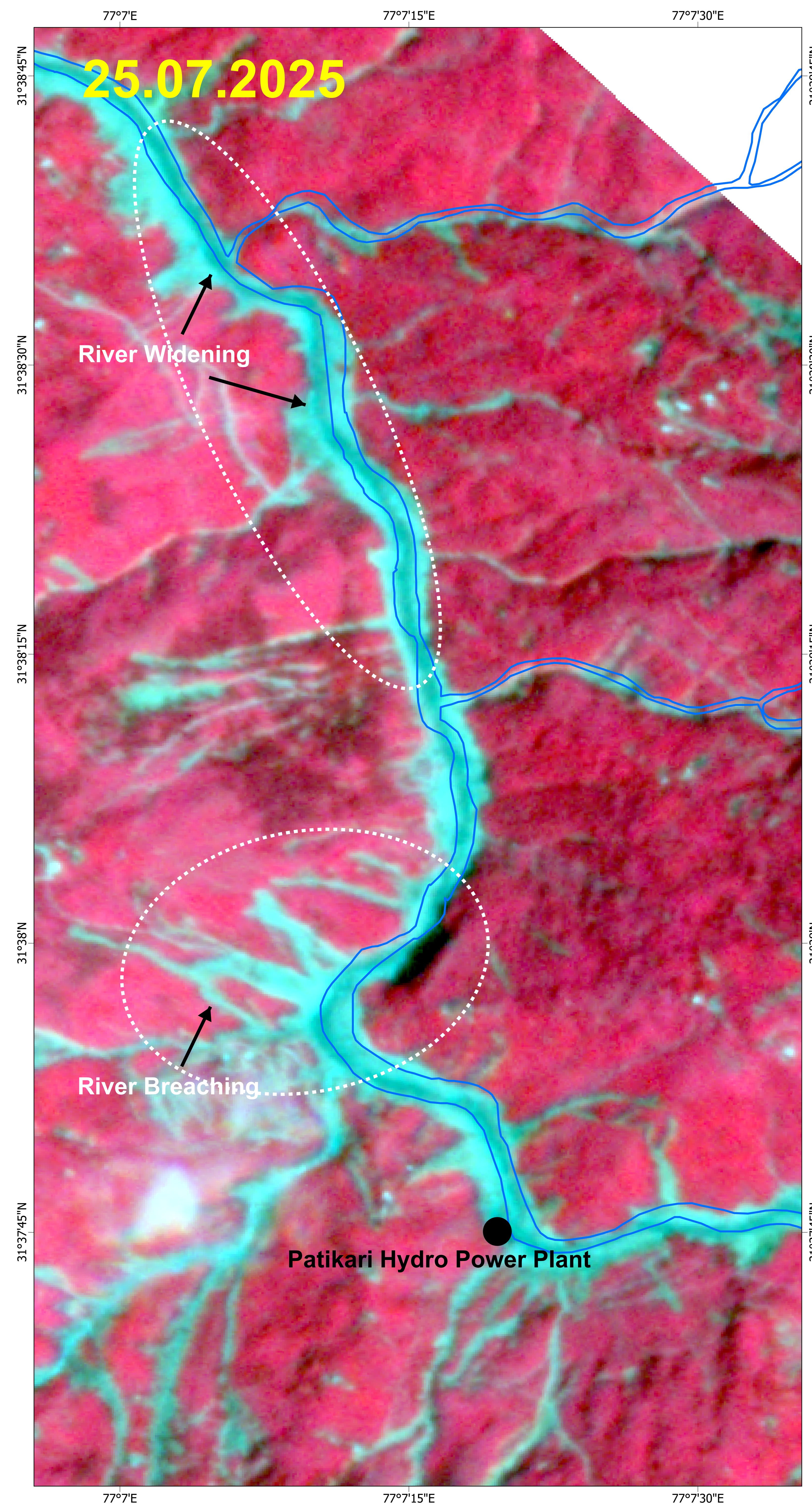
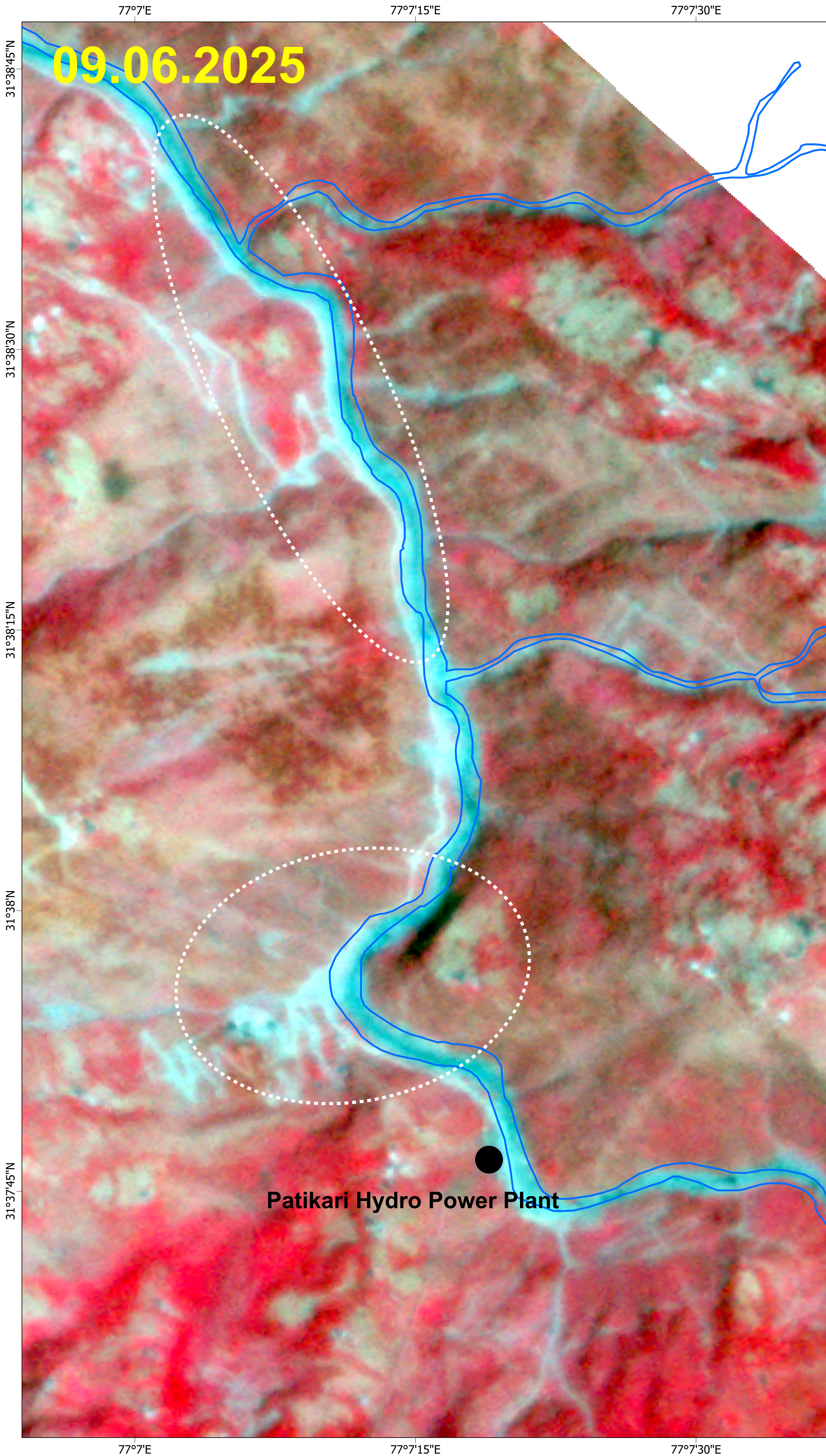
Pre Event Image : PlanetScope, 9th June 2025
Post Event : PlanetScope, 25th July 2025

Frame Work

The best effort rapid mapping product is elaborated within a very short time frame, optimizing the available material, and has been quality checked as per NRSC/ISRO procedures. All geographic information has limitations due to scale, resolution, date and interpretation of the original source material. No liability concerning the content or the use thereof is assured by the producer.
Note: When publishing this map as part of any report, source may be indicated as ' NRSC (2025) - Flood Inundated areas in Part of Himachal Pradesh State (as on 25.07.2025)' , Map no : 2025/FL/HP/3/25072025, NRSC/ISRO, Hyderabad.

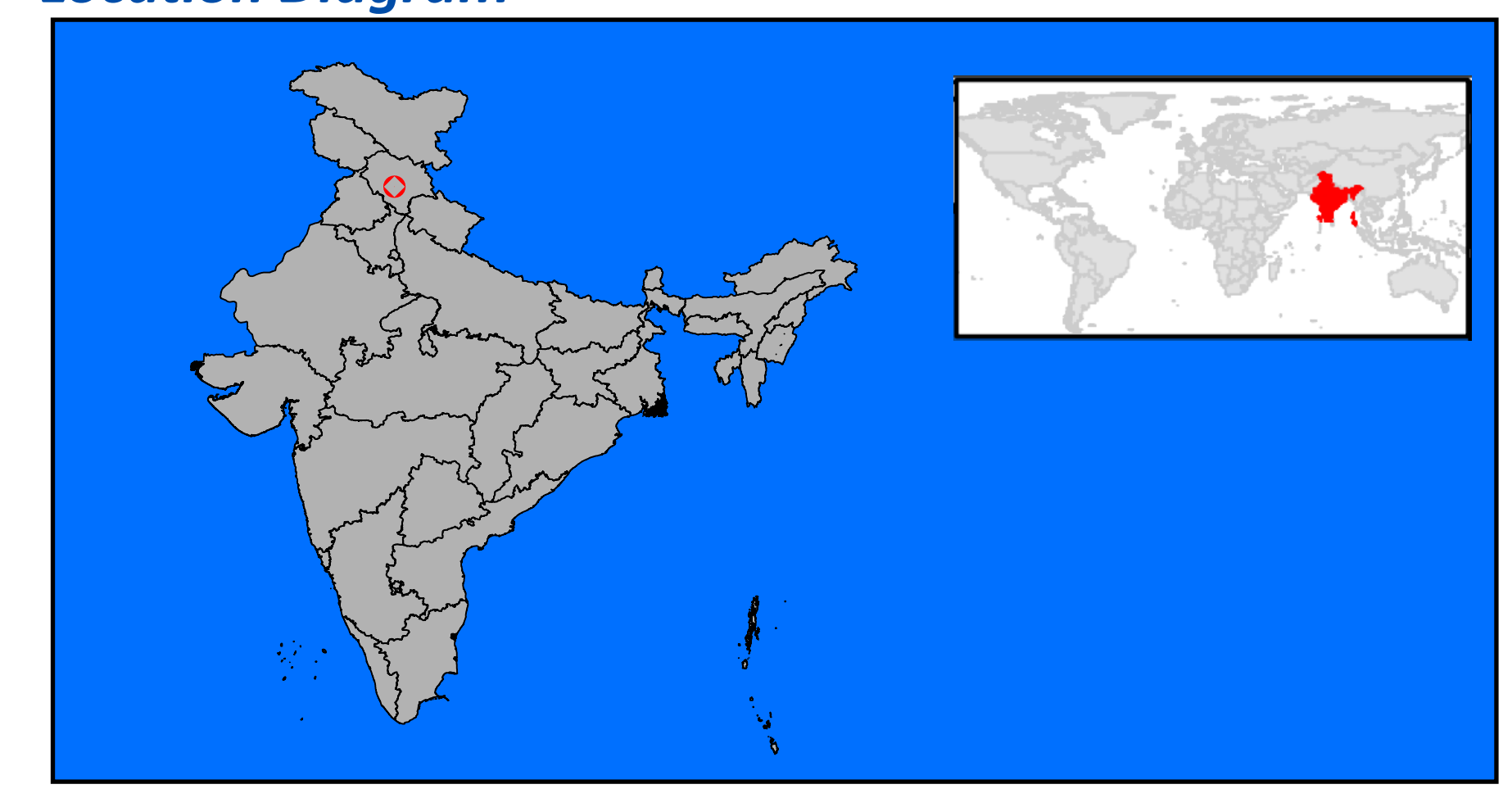
E-mail: flood@nrsc.gov.in





Pre-Post Satellite Images over Patikari, Mandi District, Himachal Pradesh, India

Location Diagram



Cartographic Information

Local Projection : WGS 1984 UTM Zone 43N Datum : WGS1984
Geographic projection : Lat / Lon (DMS), Datum:WGS 84



Legend

Stream

Interpretation

Satellite image acquired on 25th July, 2025 after the flood event. Changes are observed in the River channel, clearly indicating the river breach at this location around Patkari, and Patikari Hydro Power Plant may be affected.

Data Source

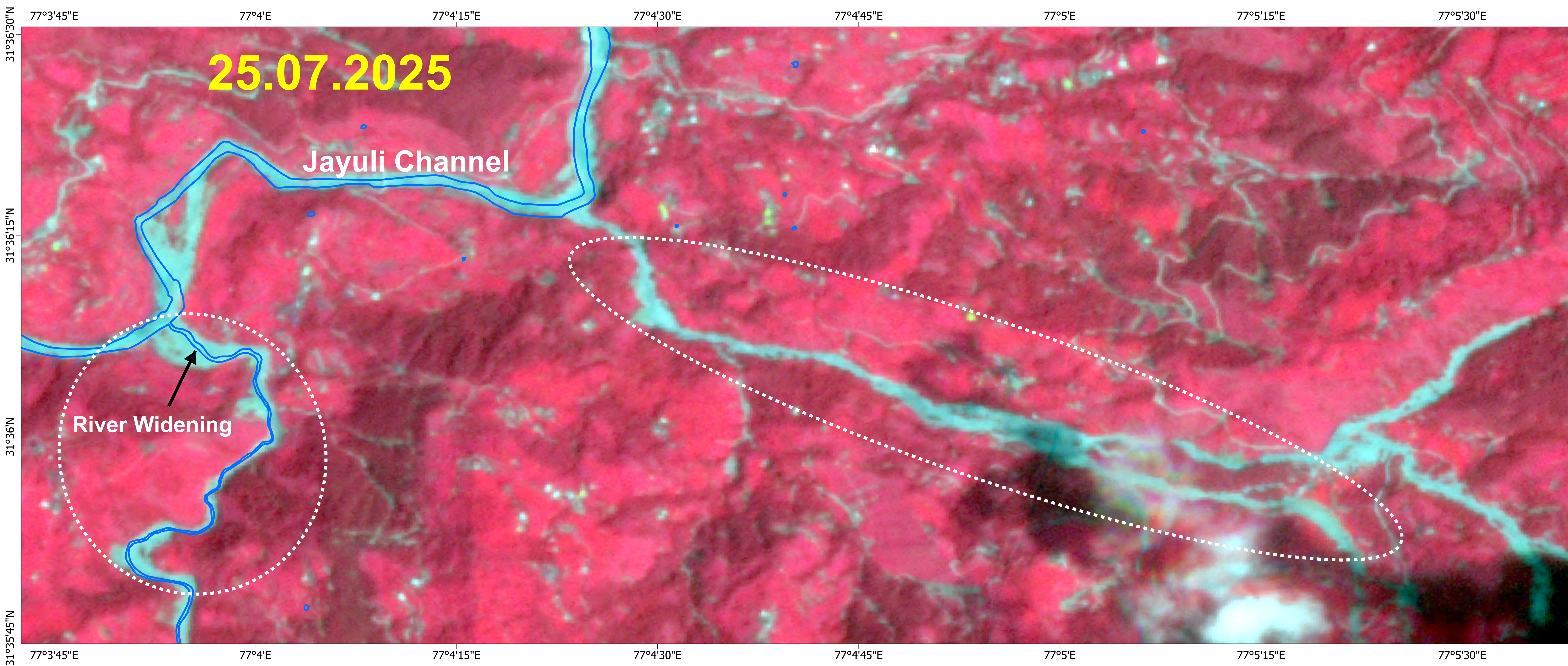
Pre Event Image : PlanetScope, 9th June 2025
Post Event : PlanetScope, 25th July 2025

Frame Work

The best effort rapid mapping product is elaborated within a very short time frame, optimizing the available material, and has been quality checked as per NRSC/ISRO procedures. All geographic information has limitations due to scale, resolution, date and interpretation of the original source material. No liability concerning the content or the use thereof is assured by the producer.
Note: When publishing this map as part of any report, source may be indicated as ' NRSC (2025) - Flood Inundated areas in Part of Himachal Pradesh State (as on 25.07.2025)' , Map no : 2025/FL/HP/4/25072025, NRSC/ISRO, Hyderabad.

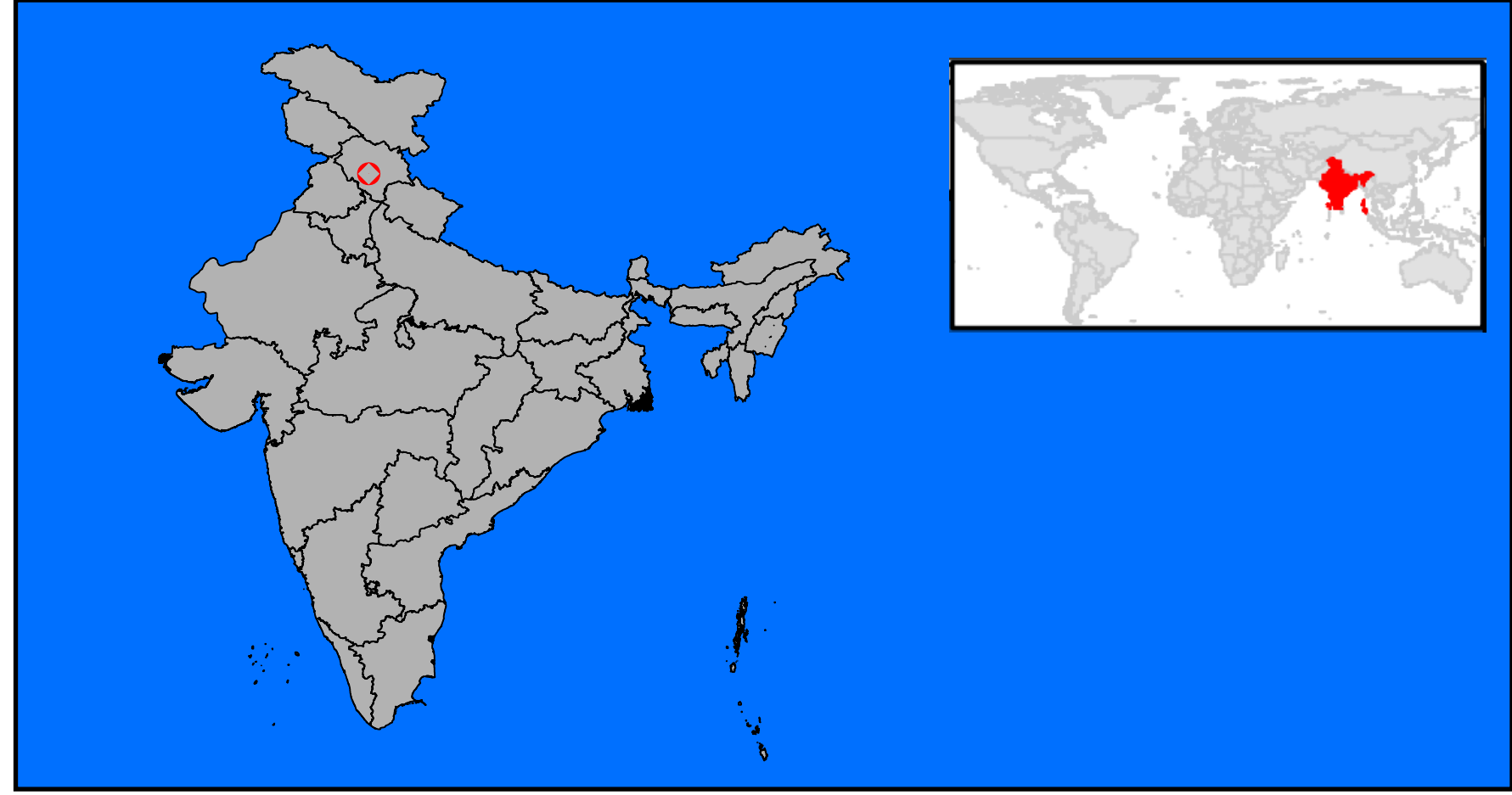
E-mail: flood@nrsc.gov.in





Pre-Post Satellite Images over Pangliur, Mandi District, Himachal Pradesh, India

Location Diagram

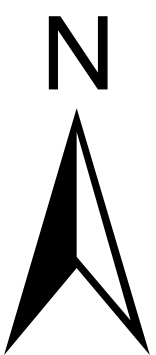


Cartographic Information

Local Projection : WGS 1984 UTM Zone 43N Datum : WGS1984
Geographic projection : Lat / Lon (DMS), Datum:WGS 84

Scale : 1:4000

0 0.1 0.2 0.4 Kilometers



Legend

Stream

Interpretation

Satellite image acquired on 25th July, 2025 after the flood event. Changes in River morphology were observed, and river widening is observed in Pangliur area, Mandi District, Himachal Pradesh.

Data Source

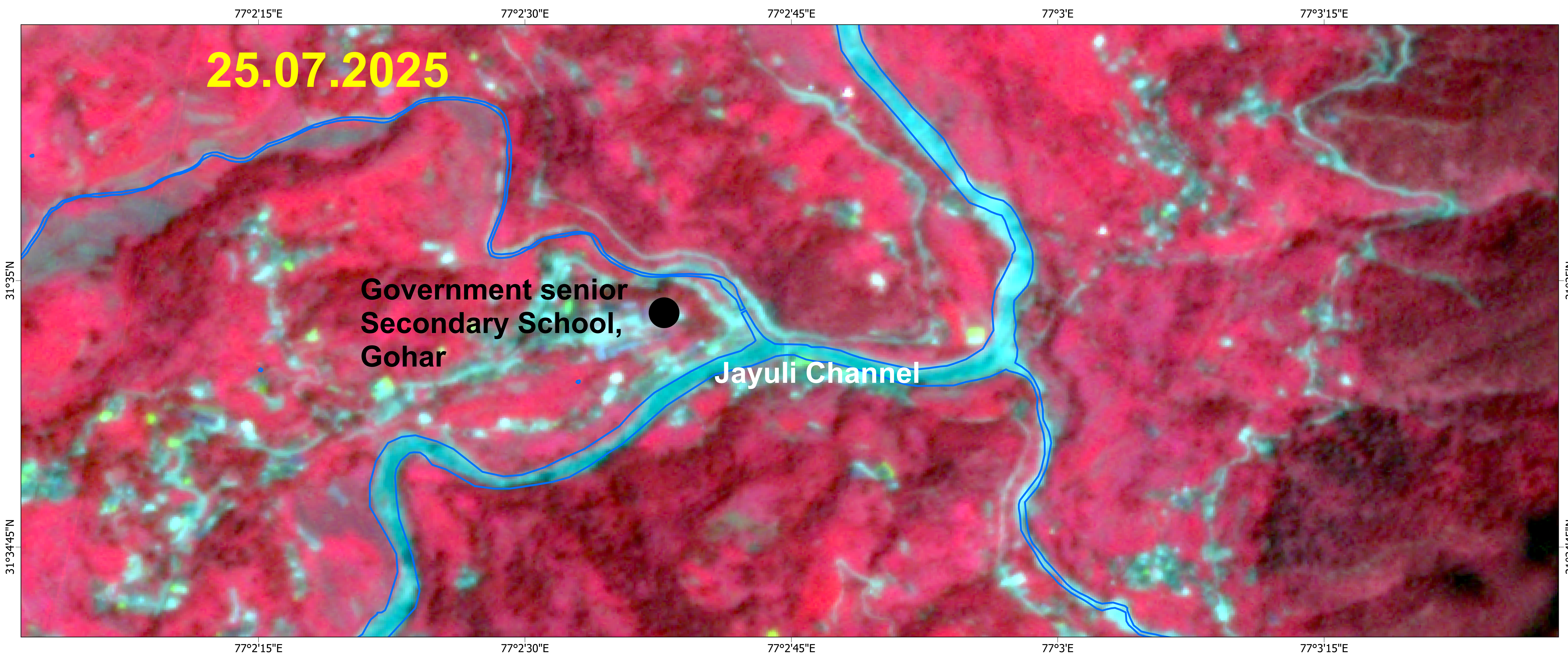
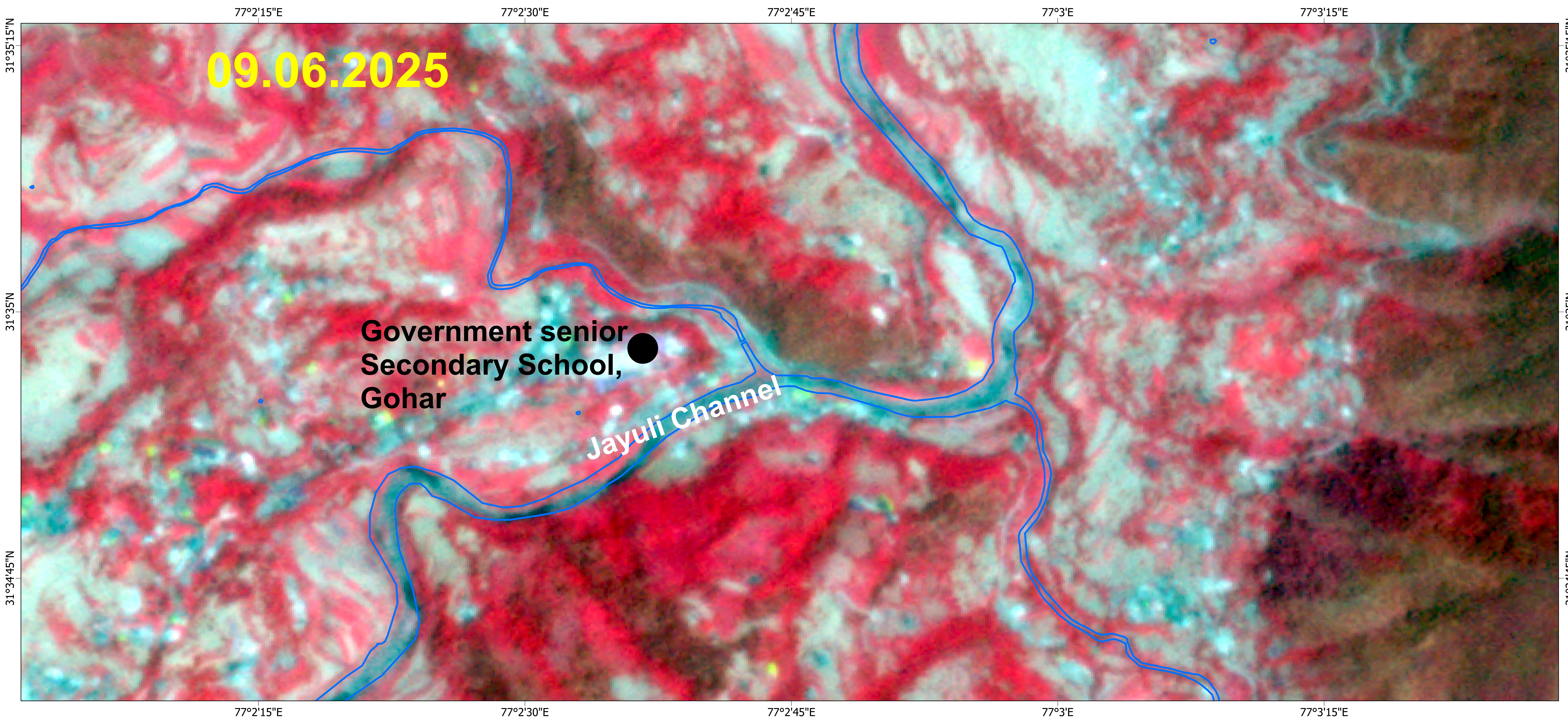
Pre Event Image : PlanetScope, 9th June 2025
Post Event : PlanetScope, 25th July 2025

Frame Work

The best effort rapid mapping product is elaborated within a very short time frame, optimizing the available material, and has been quality checked as per NRSC/ISRO procedures. All geographic information has limitations due to scale, resolution, date and interpretation of the original source material. No liability concerning the content or the use thereof is assured by the producer.
Note: When publishing this map as part of any report, source may be indicated as ' NRSC (2025) - Flood Inundated areas in Part of Himachal Pradesh State (as on 25.07.2025)' , Map no : 2025/FL/HP/5/25072025, NRSC/ISRO, Hyderabad.

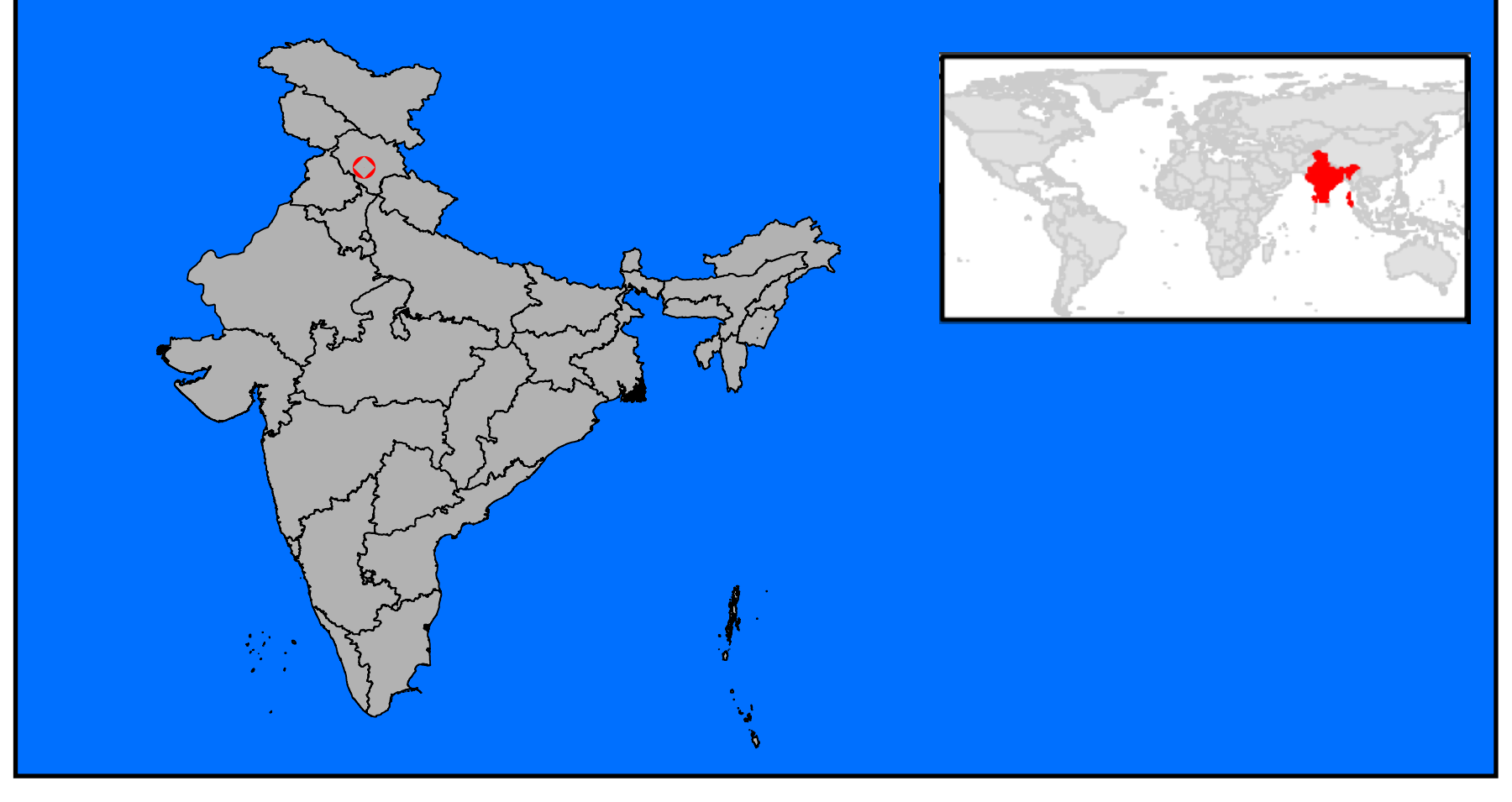
E-mail: flood@nrs.gov.in





Pre-Post Satellite Images over Gohar, Mandi District, Himachal Pradesh, India

Location Diagram

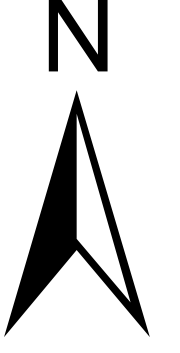


Cartographic Information

Local Projection : WGS 1984 UTM Zone 43N Datum : WGS1984
Geographic projection : Lat / Lon (DMS), Datum:WGS 84

Scale : 1:3000

0 0.07 0.15 0.3 Kilometers



Legend

Stream

Interpretation

Satellite image acquired on 25th July, 2025 after the flood event. No significant changes are observed in the River channel, clearly indicating the stable river banks at Gohar, Mandi District, Himachal Pradesh.

Data Source

Pre Event Image : PlanetScope, 9th June 2025
Post Event : PlanetScope, 25th July 2025

Frame Work

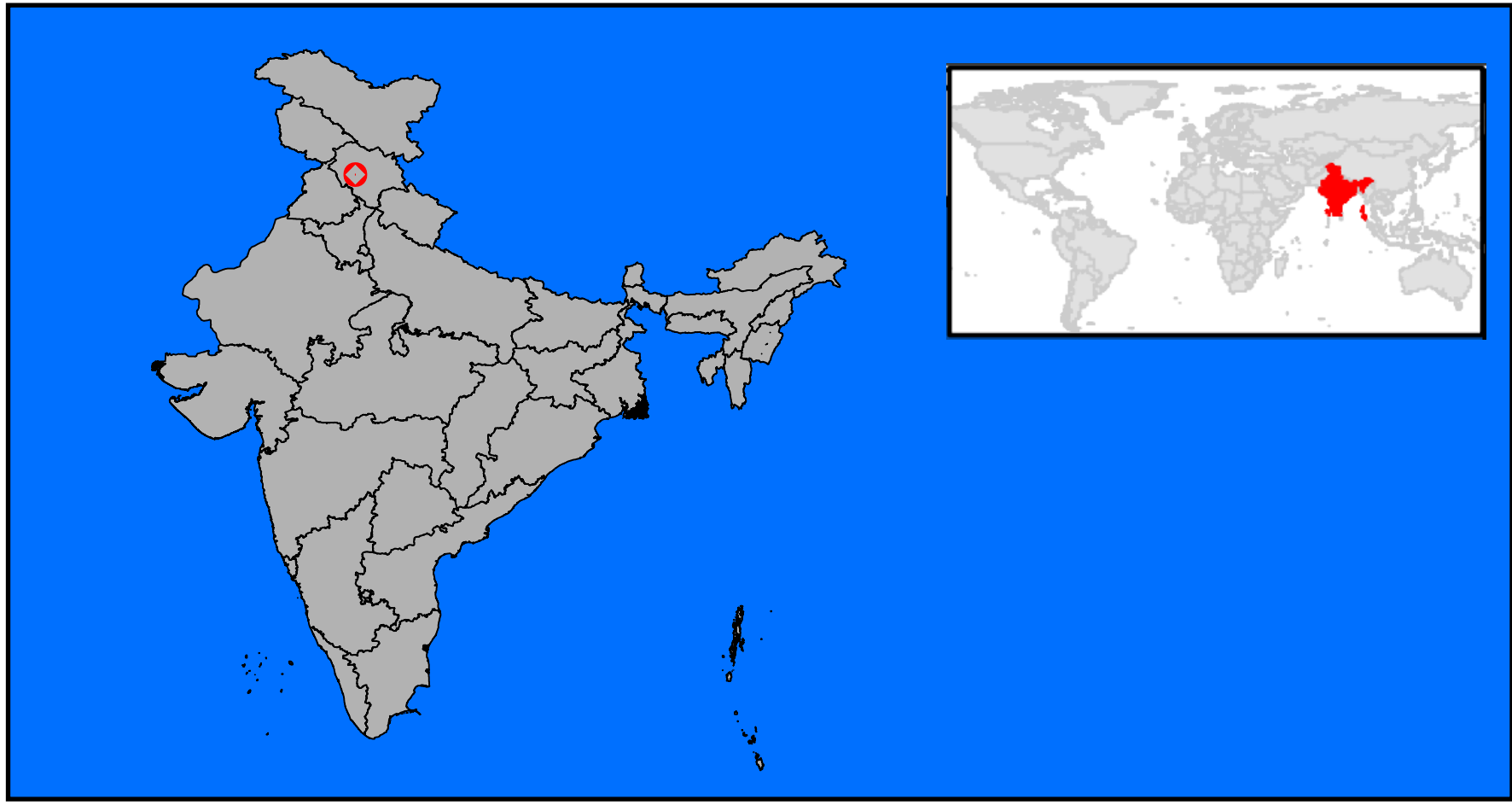
The best effort rapid mapping product is elaborated within a very short time frame, optimizing the available material, and has been quality checked as per NRSC/ISRO procedures. All geographic information has limitations due to scale, resolution, date and interpretation of the original source material. No liability concerning the content or the use thereof is assured by the producer.
Note: When publishing this map as part of any report, source may be indicated as ' NRSC (2025) - Flood Inundated areas in Part of Himachal Pradesh State (as on 25.07.2025)' , Map no : 2025/FL/HP/6/25072025, NRSC/ISRO, Hyderabad.

E-mail: flood@nrs.gov.in



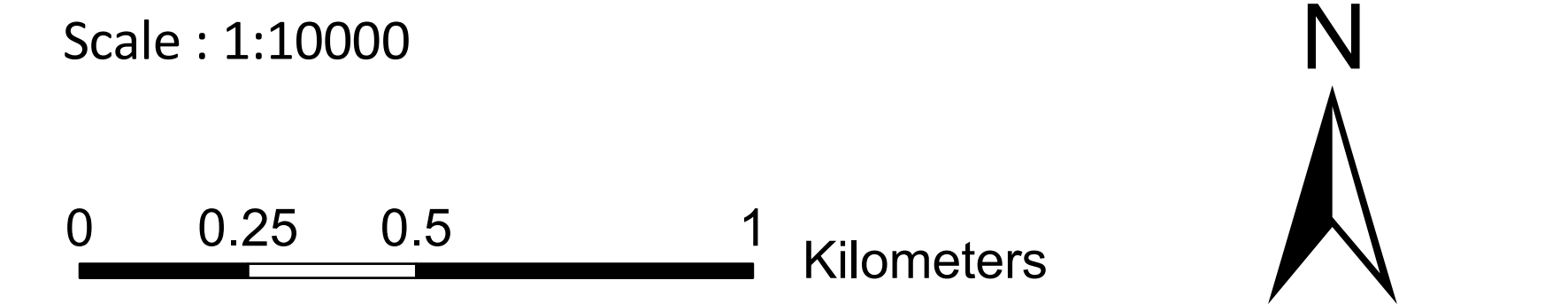
**Pre-Post Satellite Images over Dharampur,
Mandi District, Himachal Pradesh, India**

Location Diagram



Cartographic Information

Local Projection : WGS 1984 UTM Zone 43N Datum : WGS1984
Geographic projection : Lat / Lon (DMS), Datum:WGS 84



Legend

Stream

Interpretation

Satellite image acquired on 25th July, 2025 after the flood event. No significant changes are observed in the River channel,clearly indicating the stable river bank in the location around Dharampur, Mandi District, Himachal Pradesh.

Data Source

Pre Event Image : PlanetScope, 9th June 2025
Post Event : PlanetScope, 25th July 2025

Frame Work

The best effort rapid mapping product is elaborated within a very short time frame, optimizing the available material, and has been quality checked as per NRSC/ISRO procedures. All geographic information has limitations due to scale, resolution, date and interpretation of the original source material. No liability concerning the content or the use thereof is assured by the producer.
Note: When publishing this map as part of any report, source may be indicated as ' NRSC (2025) - Flood Inundated areas in Part of Himachal Pradesh State (as on 25.07.2025)' , Map no : 2025/FL/HP/8/25072025, NRSC/ISRO, Hyderabad.

E-mail: flood@nrsc.gov.in

