

Map ID: 2024/FL/UP/VAP/18a/18072024

Date of Issue: 19.07.2024

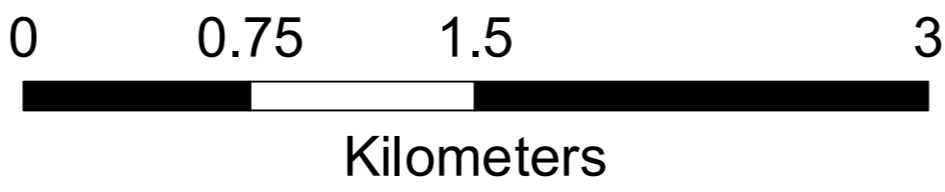
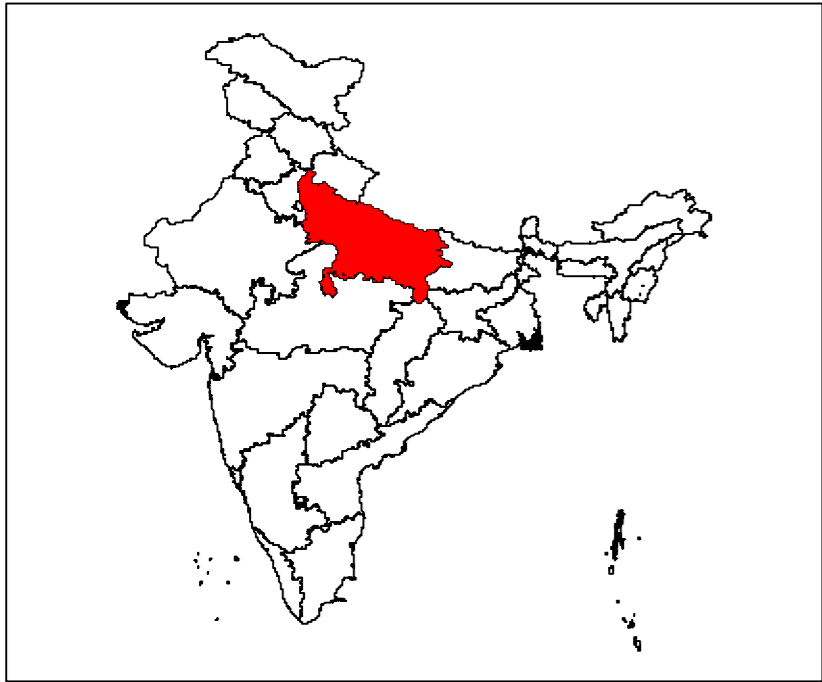
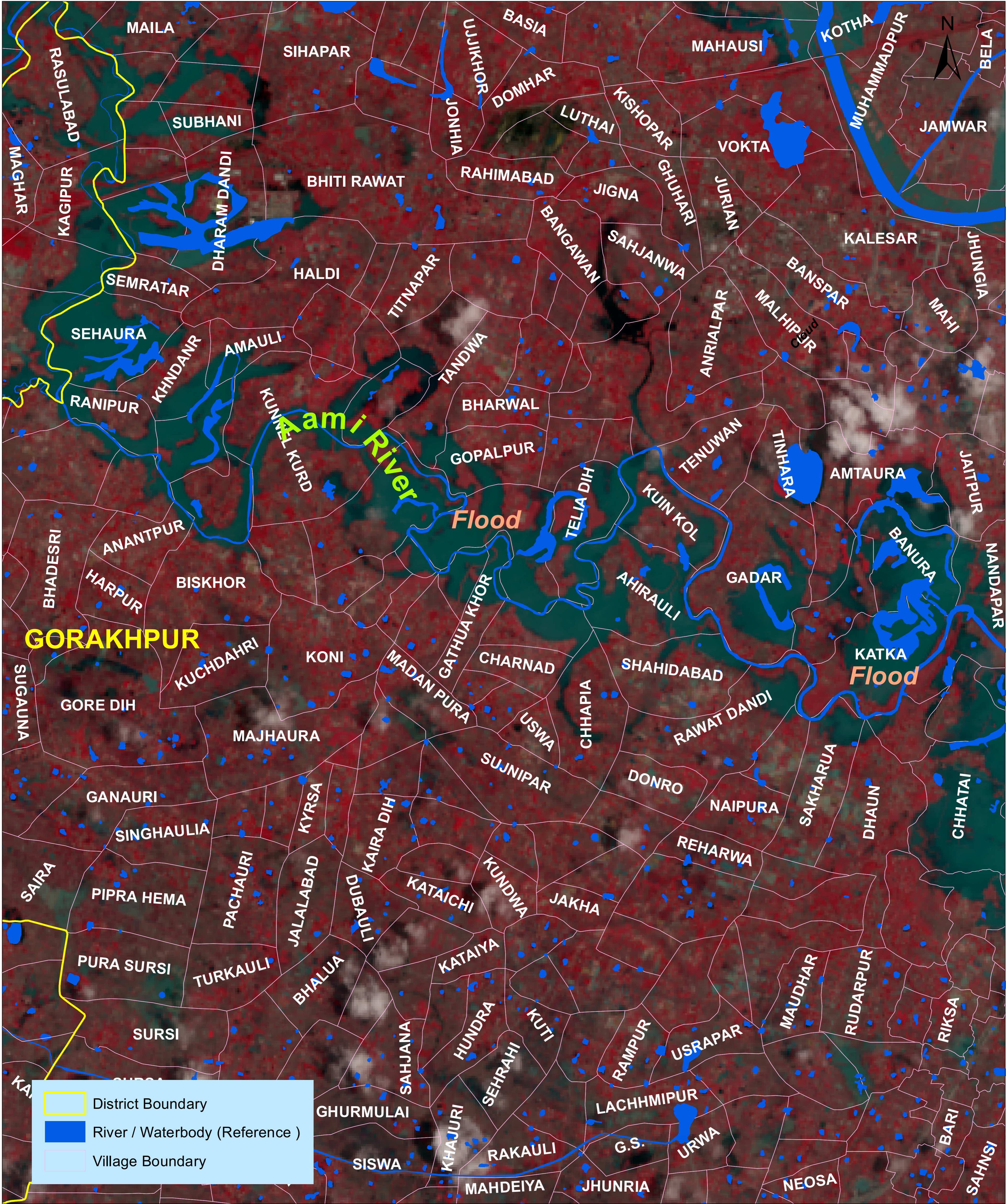
Disaster Management Support Group
Remote Sensing Applications Area
National Remote Sensing Centre, ISRO
Dept. of Space, Govt. of India
Hyderabad- 500 037
E-Mail: flood@nrsdc.gov.in
www.nrsdc.gov.in

Landsat-8 Satellite image showing Flood Inundation in parts of Gorakhpur Districts, Uttar Pradesh State

For Official Use



Landsat-8 Satellite image of 18-07-2024



Map ID: 2024/FL/UP/VAP/18b/18072024
Date of Issue: 19.07.2024

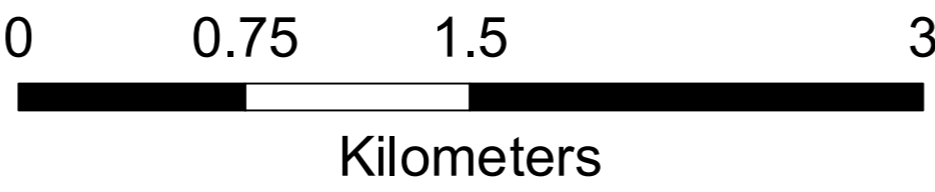
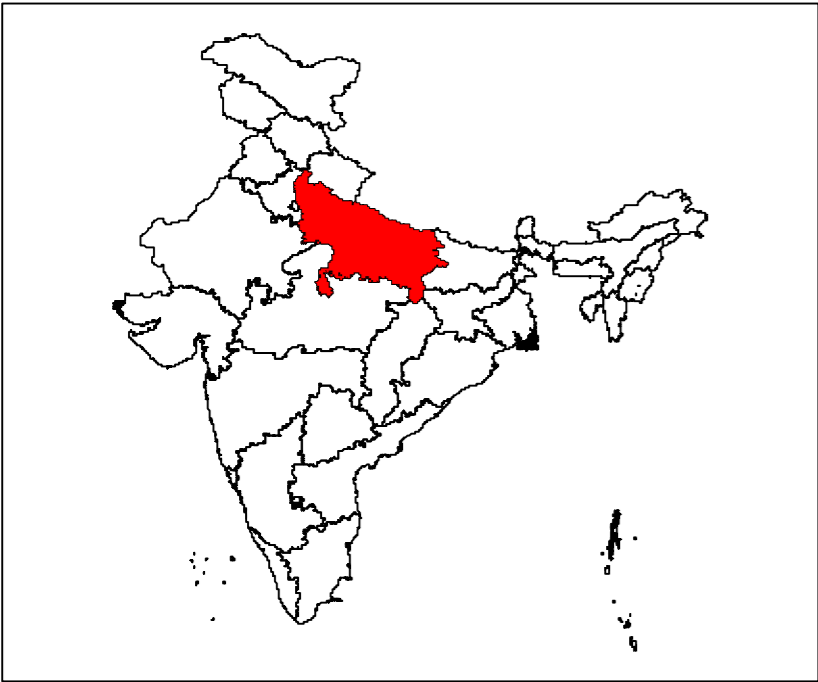
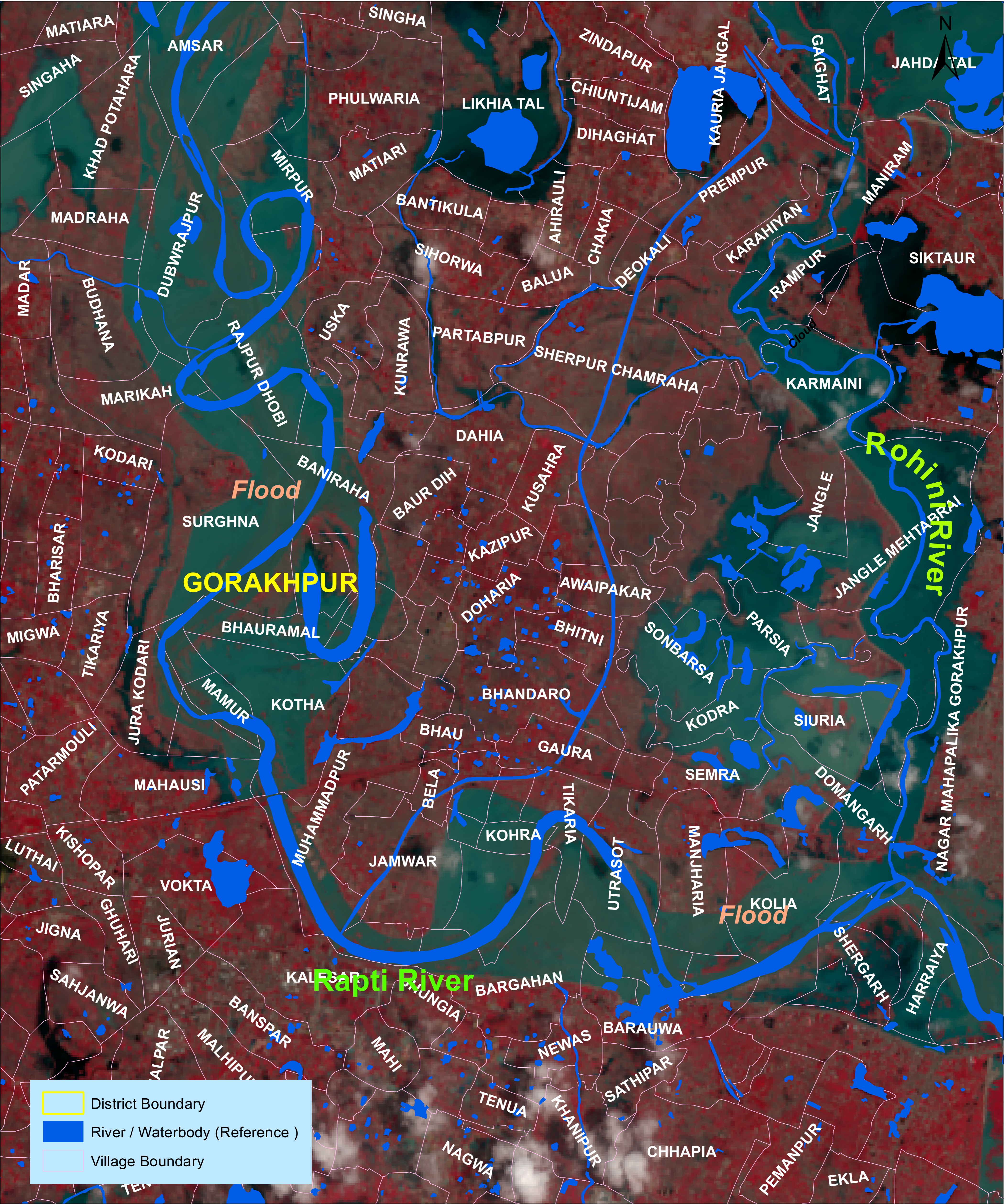
Disaster Management Support Group
Remote Sensing Applications Area
National Remote Sensing Centre, ISRO
Dept. of Space, Govt. of India
Hyderabad- 500 037
E-Mail: flood@nrsc.gov.in
www.nrsc.gov.in

Landsat-8 Satellite image showing Flood Inundation in parts of Gorakhpur Districts, Uttar Pradesh State

For Official Use



Landsat-8 Satellite image of 18-07-2024



Map ID: 2024/FL/UP/VAP/18c/18072024

Date of Issue: 19.07.2024

Disaster Management Support Group
Remote Sensing Applications Area
National Remote Sensing Centre, ISRO
Dept. of Space, Govt. of India
Hyderabad- 500 037
E-Mail: flood@nrsdc.gov.in
www.nrsdc.gov.in

Citation ' NRSC (2024) - Flood Inundated areas in Part of Uttar Pradesh (as on 18.07.2024)', Map no : 2024/FL/UP/VAP/18d/16072024, NRSC/ISRO,Hyderabad

Citation ' NRSC (2024) - Flood Inundated areas in Part of Uttar Pradesh (as on 18.07.2024) '. Map no : 2024/FL/UP/VAP/18e/16072024. NRSC/ISRO,Hyderabad