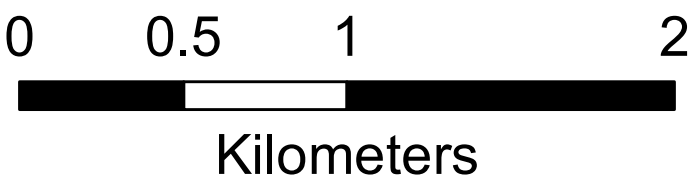
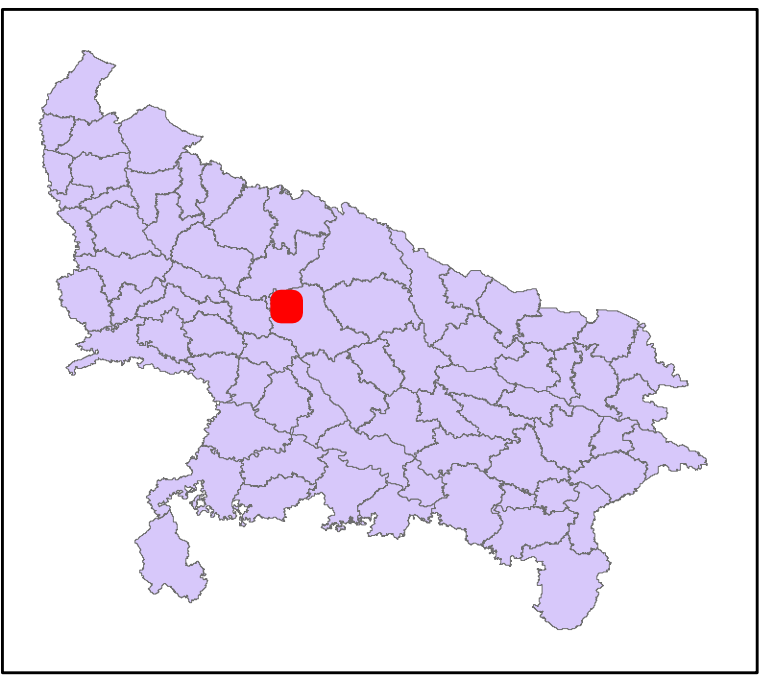
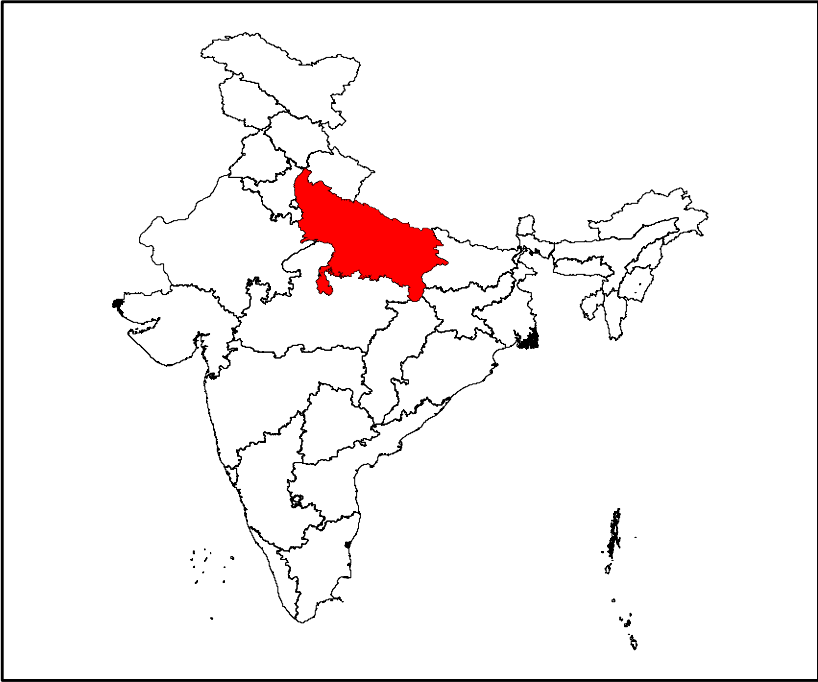
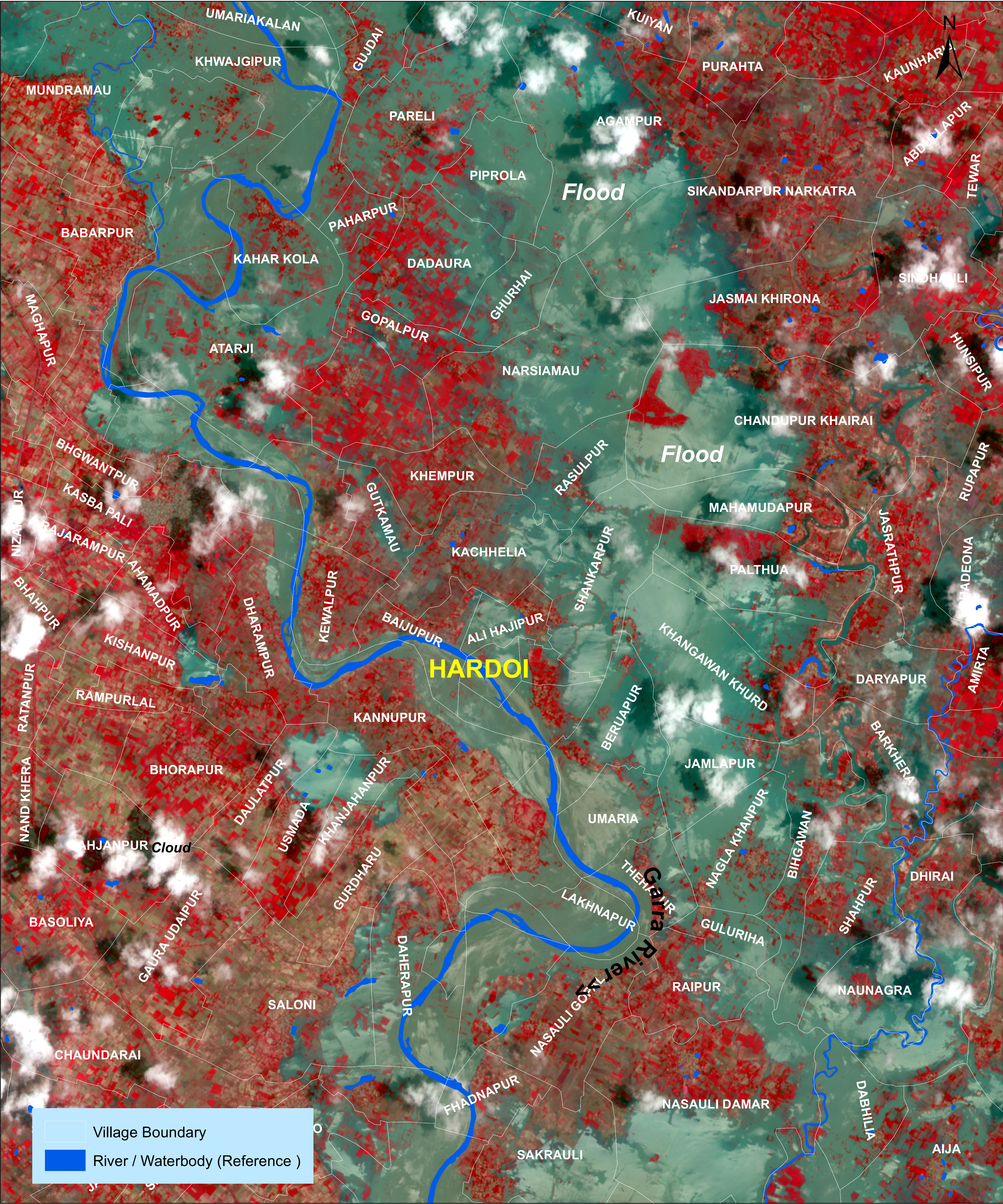


Citation ' NRSC (2024) - Flood Inundated areas in Part of Uttar Pradesh (as on 14.07.2024) '. Map no : 2024/FL/UP/VAP/11a/14072024. NRSC/ISRO,Hyderabad

Sentinel-2B Satellite image showing Flood Inundation in parts of Hardoi District, Uttar Pradesh State



Sentinel-2B Satellite image of 14-07-2024



Map ID: 2024/FL/UP/VAP/11b/14072024

Date of Issue: 15.07.2024

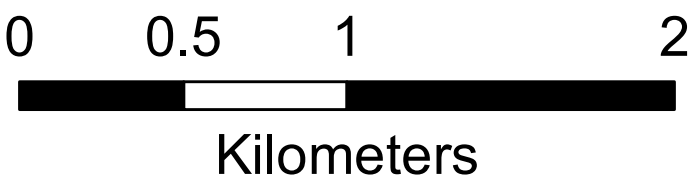
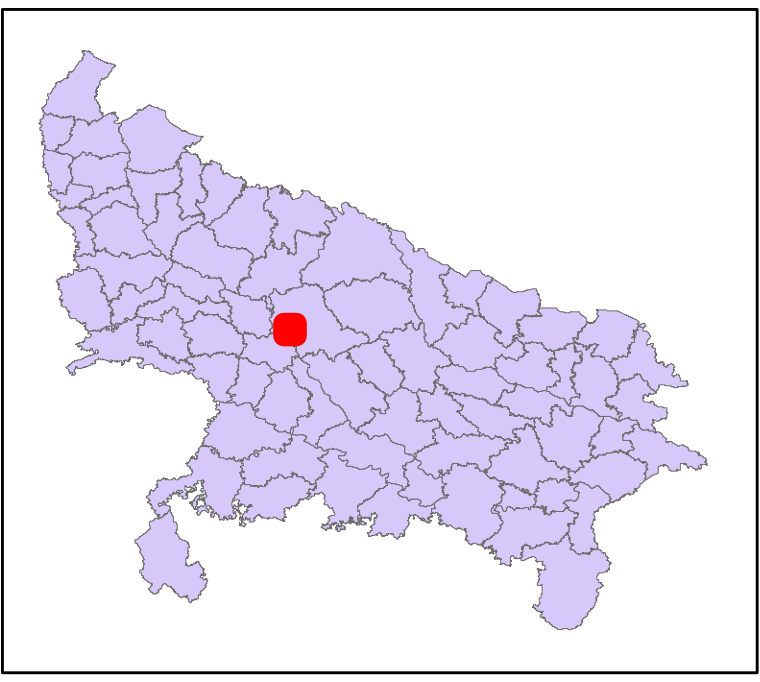
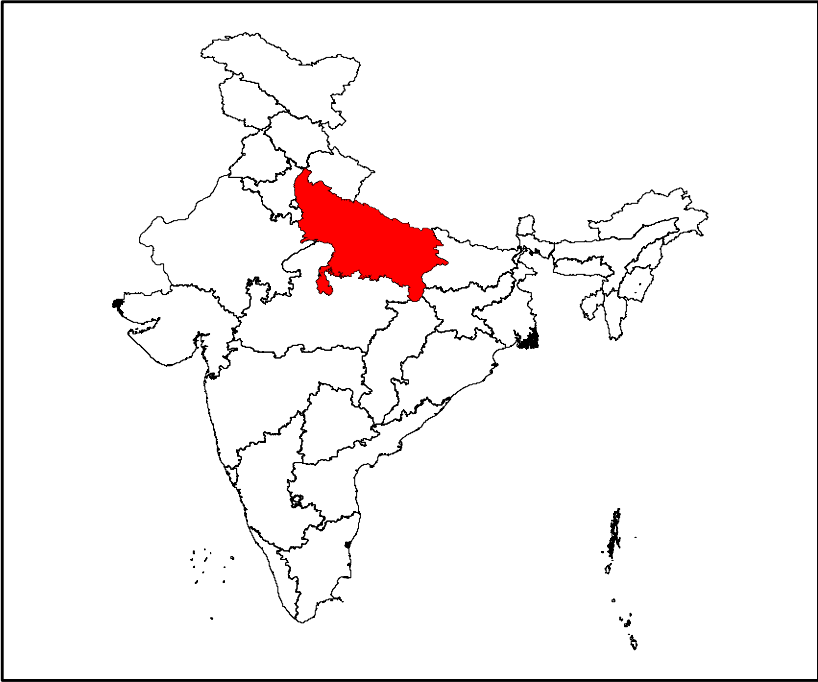
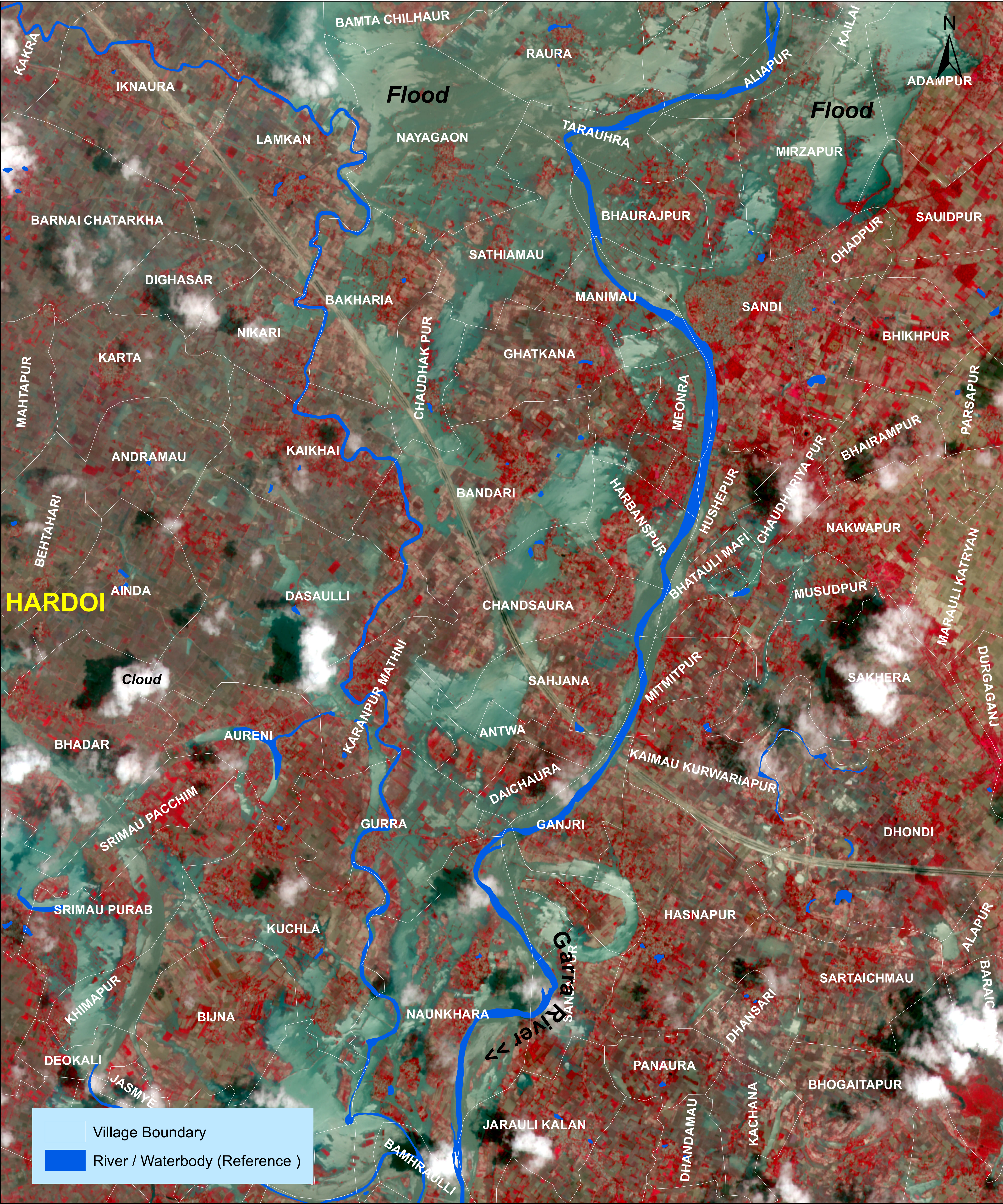
Disaster Management Support Group
Remote Sensing Applications Area
National Remote Sensing Centre, ISRO
Dept. of Space, Govt. of India
Hyderabad- 500 037
E-Mail: flood@nrsdc.gov.in
www.nrsdc.gov.in

Citation ' NRSC (2024) - Flood Inundated areas in Part of Uttar Pradesh (as on 14.07.2024)' . Map no : 2024/FL/UP/VAP/11c/14072024. NRSC/ISRO,Hyderabad

Disaster Management Support Group
Remote Sensing Applications Area
National Remote Sensing Centre, ISRO
Dept. of Space, Govt. of India
Hyderabad- 500 037
E-Mail: flood@nrsc.gov.in
www.nrsc.gov.in



Sentinel-2B Satellite image of 14-07-2024



Map ID: 2024/FL/UP/VAP/11d/14072024

Date of Issue: 15.07.2024

Disaster Management Support Group
Remote Sensing Applications Area
National Remote Sensing Centre, ISRO
Dept. of Space, Govt. of India
Hyderabad- 500 037
E-Mail: flood@nrsdc.gov.in
www.nrsdc.gov.in