

# Cumulative Flood Inundation Areas in Parts of Hardoi District, Uttar Pradesh State

Based on the analysis of multi mission Satellite Images during 08-07-2024 to 14-07-2024

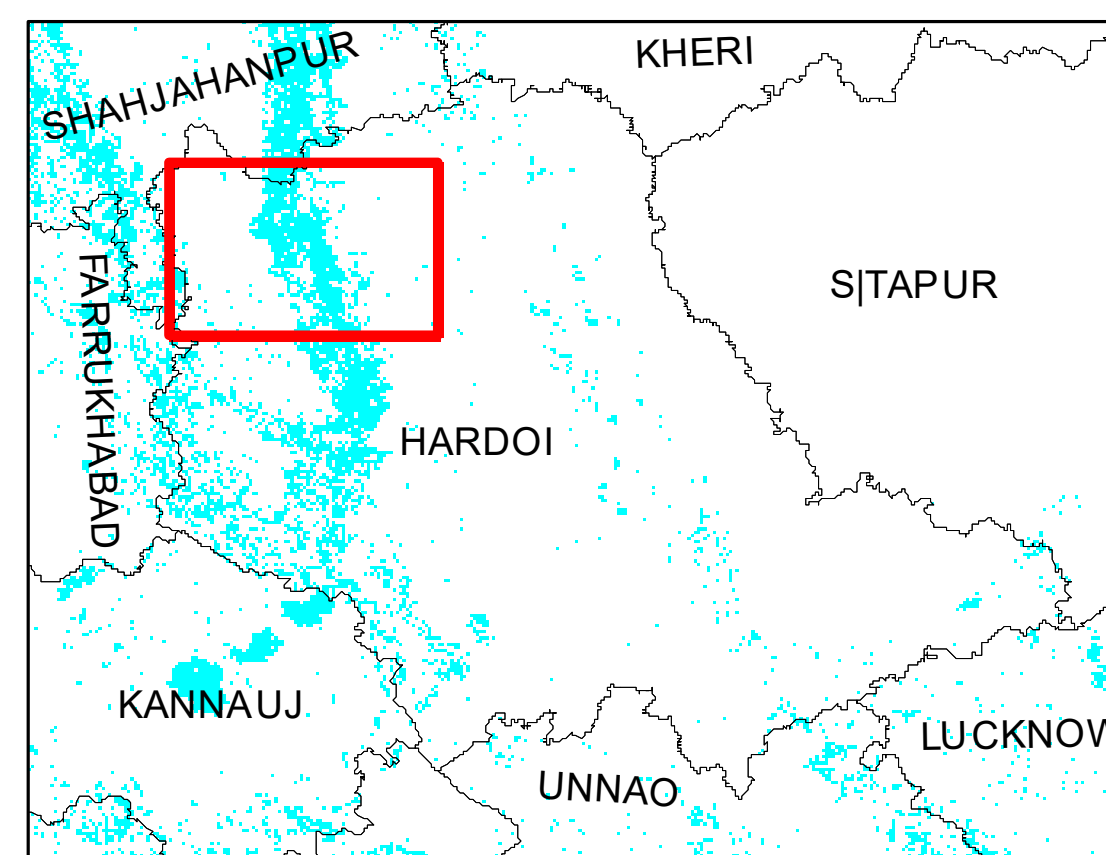
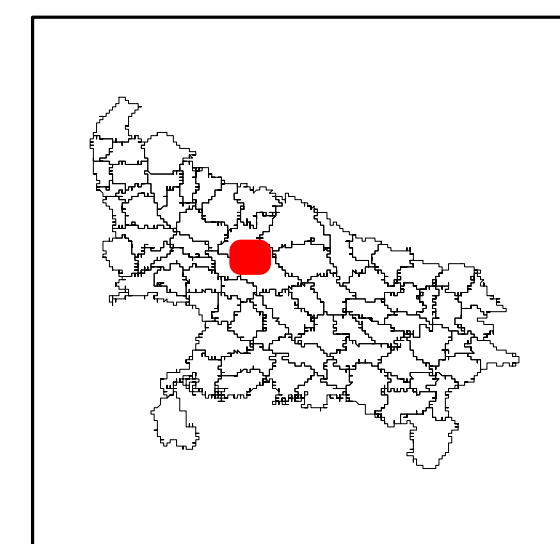
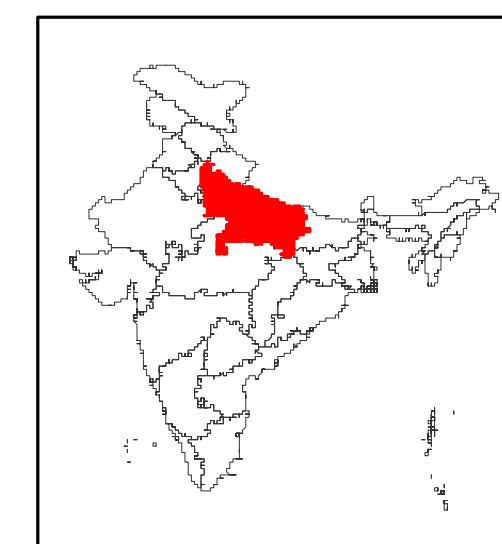
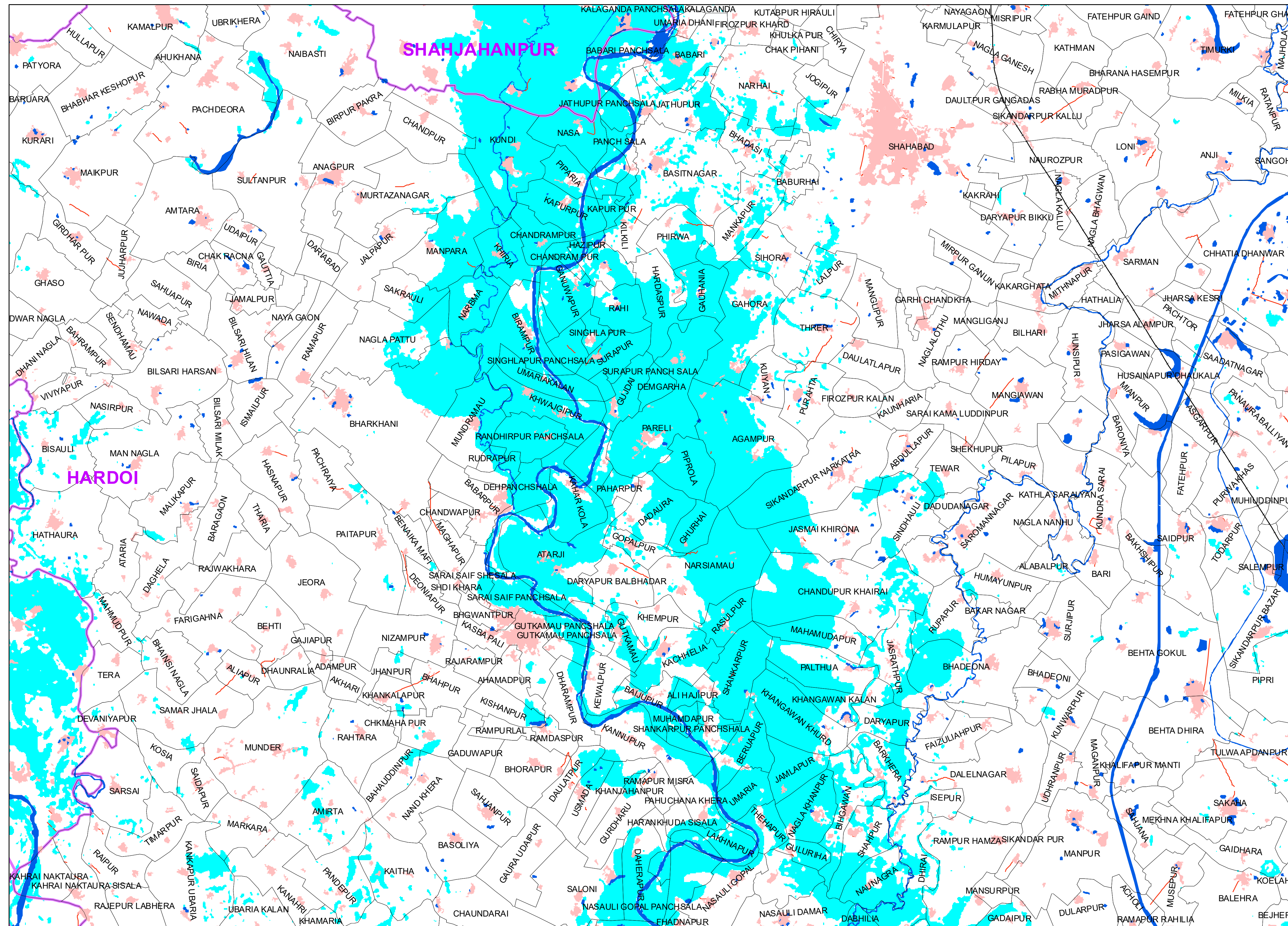
For Official Use



Map ID:

2024/FL/UP/16c1/08-14072024

Date of Issue: 17.07.2024



Location Map

## Satellite Data Used

Pre Flood Data  
Satellite:RISAT-1A MRS SAR  
May-2024

Post Flood Data  
Satellite:Multi mission satellite data  
Date of Pass:08-07-2024 to 14-07-2024

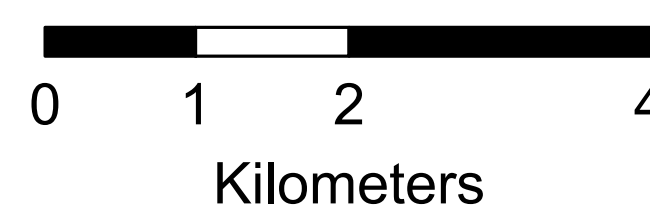
## Reference Data Used

NRSC Landuse/Landcover SISDP  
Phase-II Data of 2024, Bhuvan  
Geospatial Legacy Data





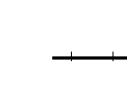
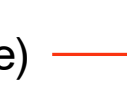
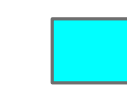
## Satellite Observations:

This map shows the cumulative flood inundation map derived from the multi-sensor satellite data acquired during 08-14th July, 2024.

Note : This is a rapid assessment using satellite data sets. This may include the flood inundation / Standing water in low lying areas due to heavy rainfall scenario/ high moist areas immediately after the rain events. Field verification not done.



## Legend

-  Village Boundary
-  River/Water Body/Canal (Reference)
-  Settlements
-  District Boundary
-  Rail Network
-  Road
-  Flood Inundation

Disaster Management Support Group  
Remote Sensing Application Area  
National Remote Sensing Centre, ISRO  
Dept. of Space, Govt. of India  
Hyderabad- 500 037  
E-Mail: [flood@nrsc.gov.in](mailto:flood@nrsc.gov.in)  
[www.nrsc.gov.in](http://www.nrsc.gov.in)



# Cumulative Flood Inundation Areas in Parts of Hardoi District, Uttar Pradesh State

Based on the analysis of multi mission Satellite Images during 08-07-2024 to 14-07-2024

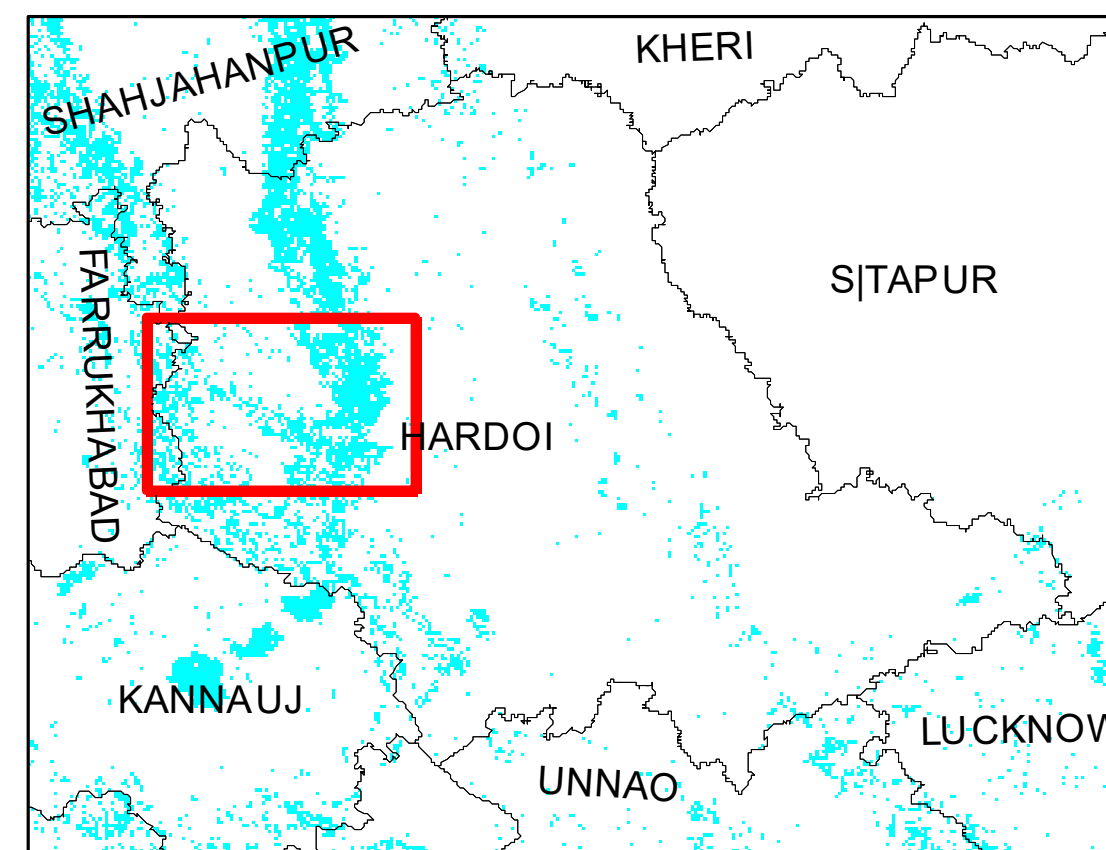
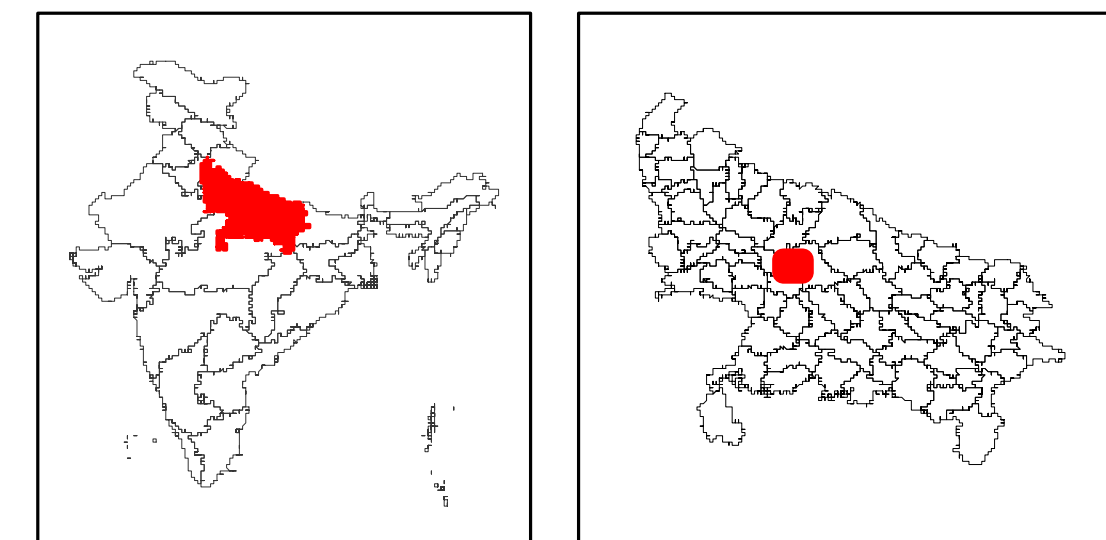
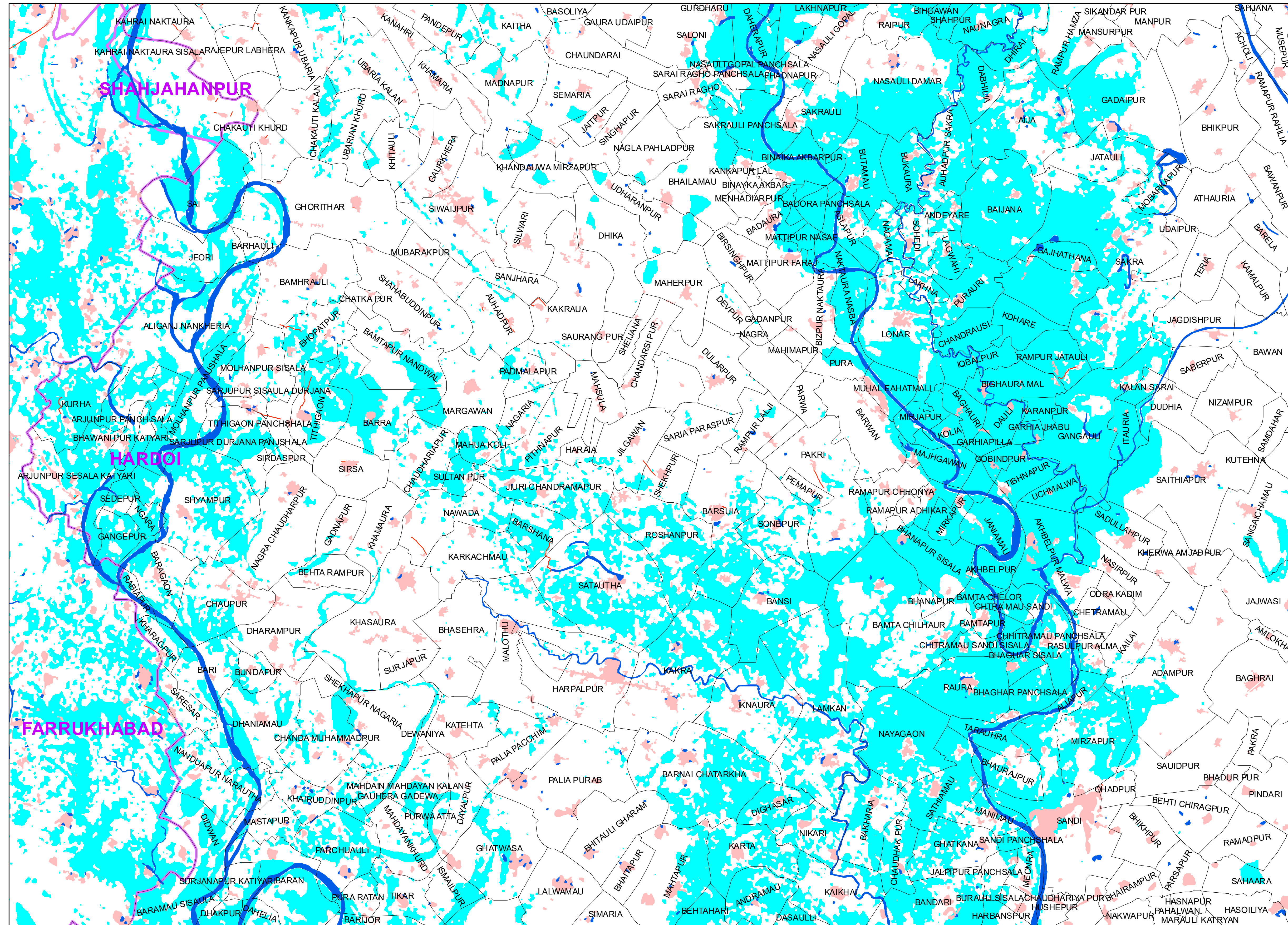
For Official Use



Map ID:

2024/FL/UP/16c2/08-14072024

Date of Issue: 17.07.2024



Location Map

## Satellite Data Used

Pre Flood Data  
Satellite:RISAT-1A MRS SAR  
May-2024

Post Flood Data  
Satellite:Multi mission satellite data  
Date of Pass:08-07-2024 to 14-07-2024

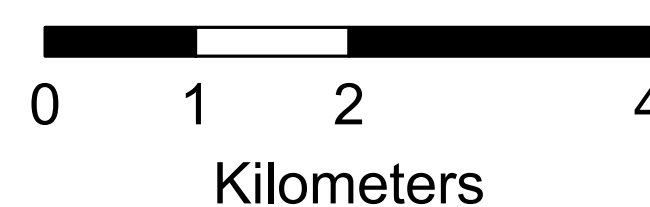
## Reference Data Used

NRSC Landuse/Landcover SISDP  
Phase-II Data of 2024, Bhuvan  
Geospatial Legacy Data

## Satellite Observations:

This map shows the cumulative flood inundation map derived from the multi-sensor satellite data acquired during 08-14th July, 2024.

Note : This is a rapid assessment using satellite data sets. This may include the flood inundation / Standing water in low lying areas due to heavy rainfall scenario/ high moist areas immediately after the rain events. Field verification not done.



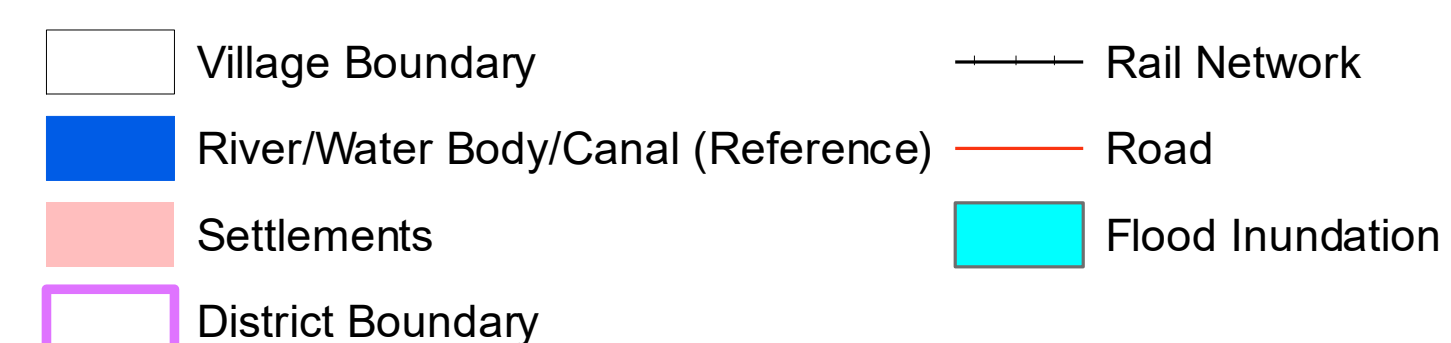
## Legend

- |                                    |                  |
|------------------------------------|------------------|
| Village Boundary                   | Rail Network     |
| River/Water Body/Canal (Reference) | Road             |
| Settlements                        | Flood Inundation |
| District Boundary                  |                  |

Disaster Management Support Group  
Remote Sensing Application Area  
National Remote Sensing Centre, ISRO  
Dept. of Space, Govt. of India  
Hyderabad- 500 037  
E-Mail: [flood@nrsc.gov.in](mailto:flood@nrsc.gov.in)  
[www.nrsc.gov.in](http://www.nrsc.gov.in)



Disaster Management Support Group  
Remote Sensing Application Area  
National Remote Sensing Centre, ISRO  
Dept. of Space, Govt. of India  
Hyderabad- 500 037  
E-Mail: [flood@nrsc.gov.in](mailto:flood@nrsc.gov.in)  
[www.nrsc.gov.in](http://www.nrsc.gov.in)



Note : This is a rapid assessment using satellite data sets. This may include the flood inundation / Standing water in low lying areas due to heavy rainfall scenario/ high mosit areas immediately after the rain events. Field verification not done.