

# Cumulative Flood Inundation Areas in Parts of Kheri District, Uttar Pradesh State

Based on the analysis of multi mission Satellite Images during 08-07-2024 to 14-07-2024

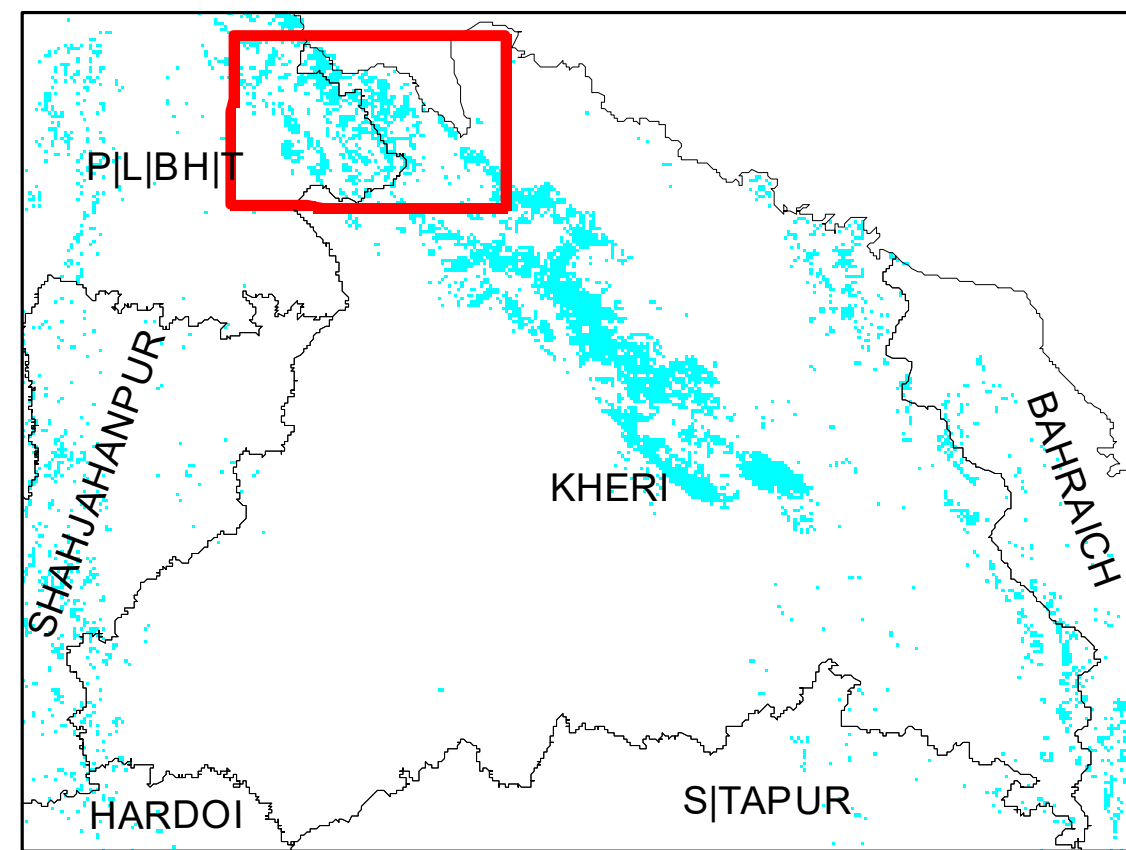
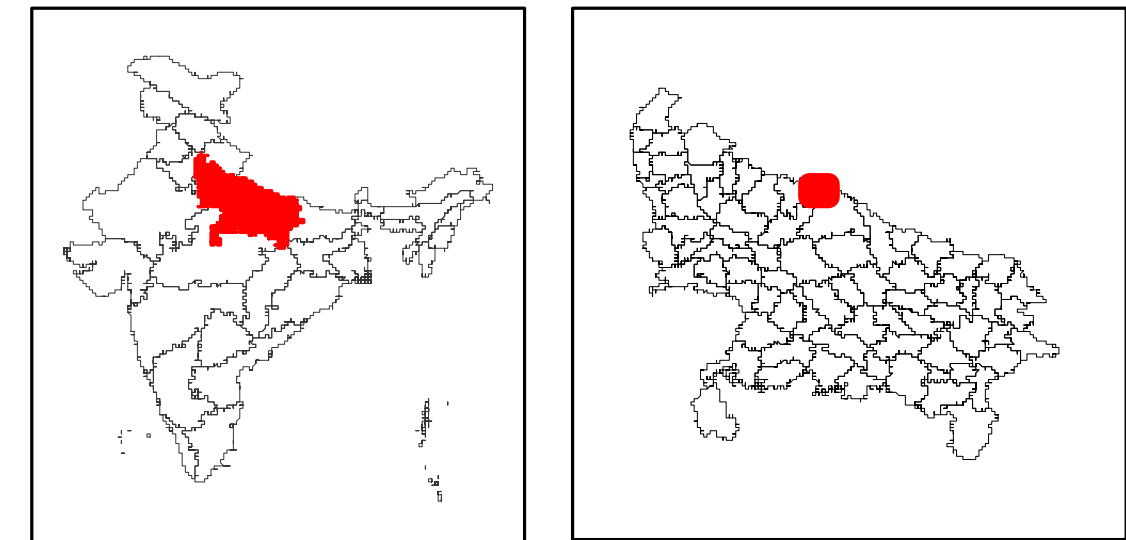
For Official Use



Map ID:

2024/FL/UP/16d1/08-14072024

Date of Issue: 17.07.2024



Location Map

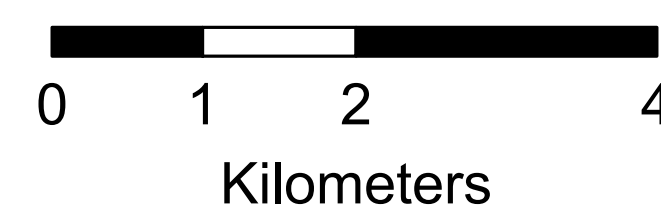
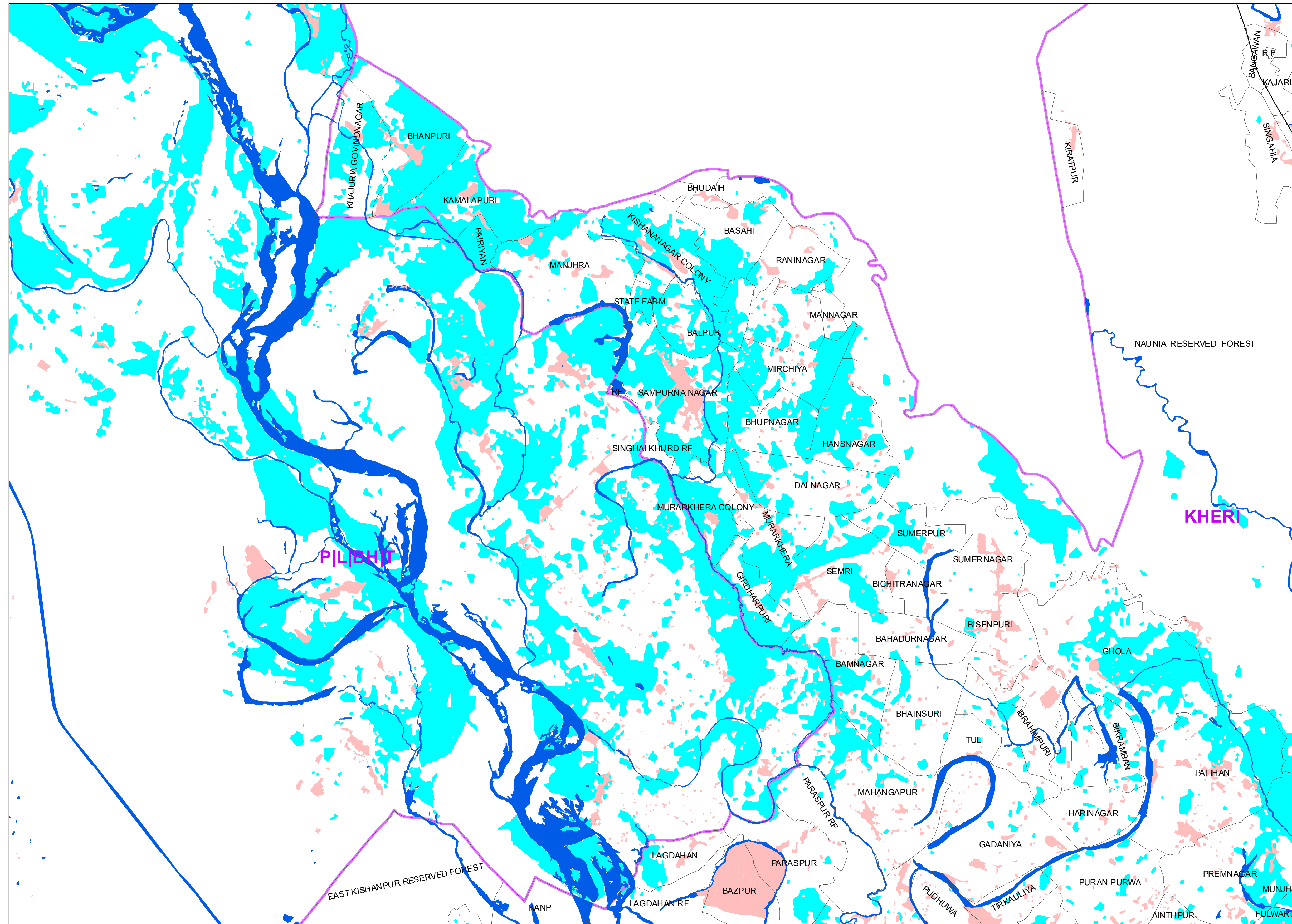
## Satellite Data Used

Pre Flood Data  
Satellite:RISAT-1A MRS SAR  
May-2024


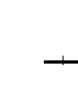





Post Flood Data  
Satellite:Multi mission satellite data  
Date of Pass:08-07-2024 to 14-07-2024

## Reference Data Used

NRSC Landuse/Landcover SISDP  
Phase-II Data of 2024, Bhuvan  
Geospatial Legacy Data



## Legend

- |  |  |
|--|--|
|  Village Boundary                   |  Rail Network     |
|  River/Water Body/Canal (Reference) |  Road             |
|  Settlements                        |  Flood Inundation |
|  District Boundary                  |  |

## Satellite Observations:

This map shows the cumulative flood inundation map derived from the multi-sensor satellite data acquired during 08-14th July, 2024.

Note : This is a rapid assessment using satellite data sets. This may include the flood inundation / Standing water in low lying areas due to heavy rainfall scenario/ high mosit areas immediately after the rain events. Field verification not done.

Disaster Management Support Group  
Remote Sensing Application Area  
National Remote Sensing Centre, ISRO  
Dept. of Space, Govt. of India  
Hyderabad- 500 037  
E-Mail: [flood@nrsc.gov.in](mailto:flood@nrsc.gov.in)  
[www.nrsc.gov.in](http://www.nrsc.gov.in)



## Cumulative Flood Inundation Areas in Parts of Kheri District, Uttar Pradesh State

Based on the analysis of multi mission Satellite Images during 08-07-2024 to 14-07-2024

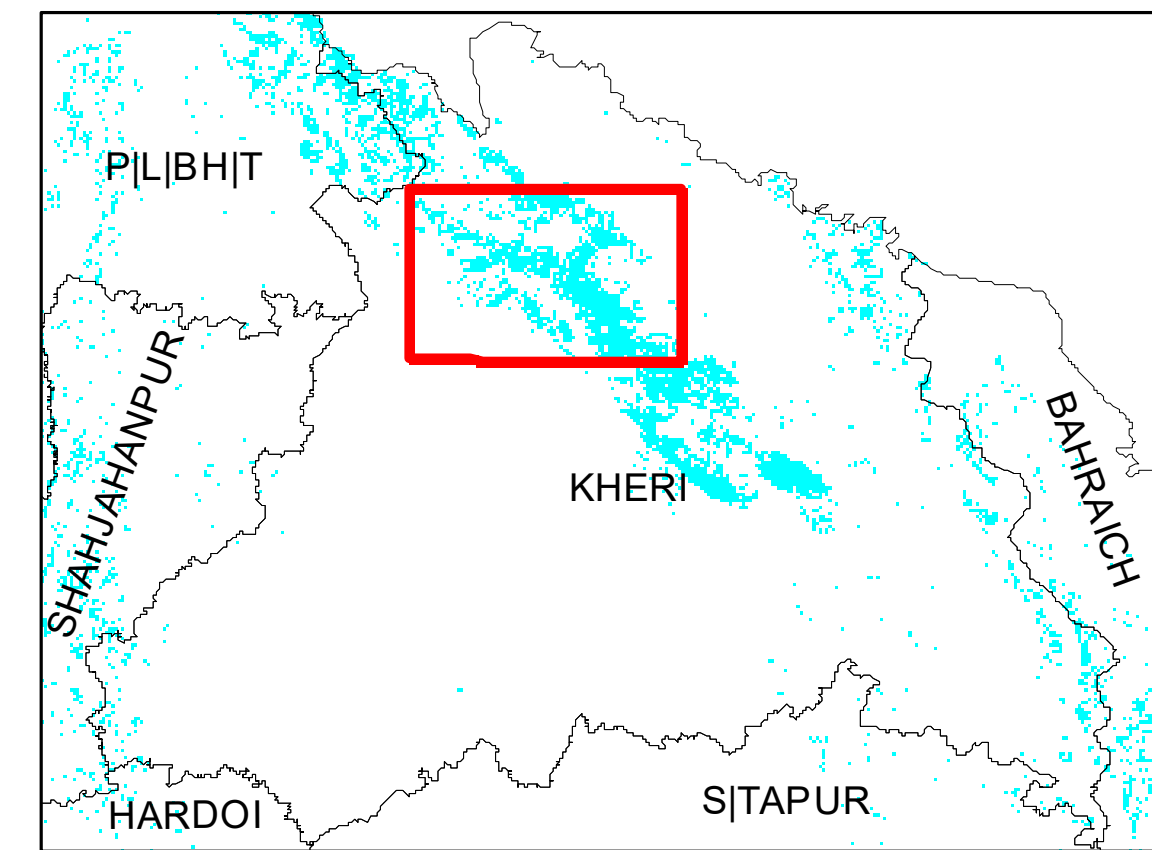
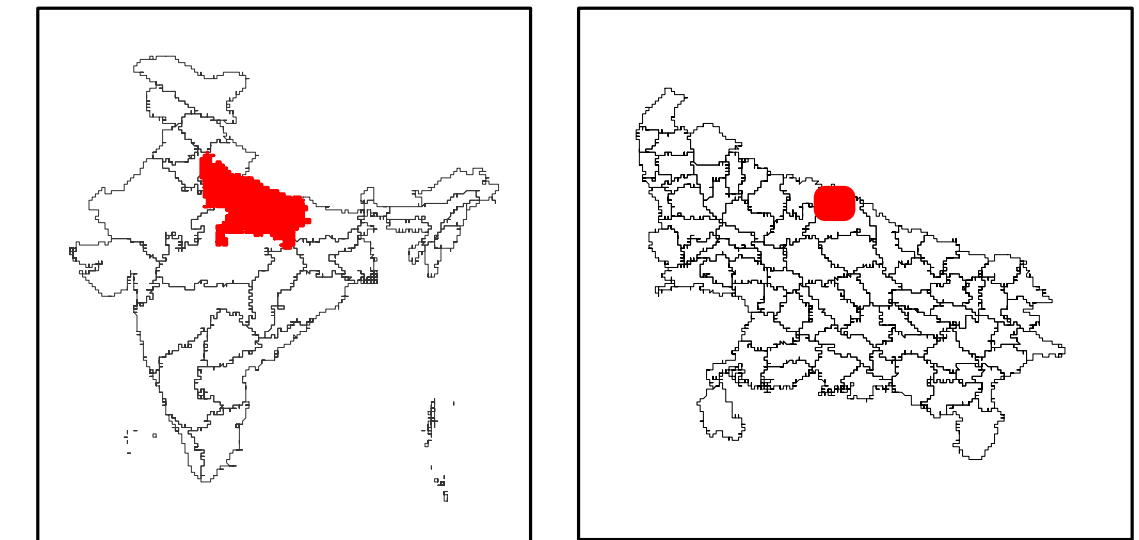
For Official Use



**Map ID:**

2024/FL/UP/16d2/08-14072024

**Date of Issue:** 17.07.2024



### Location Map

## Satellite Data Used

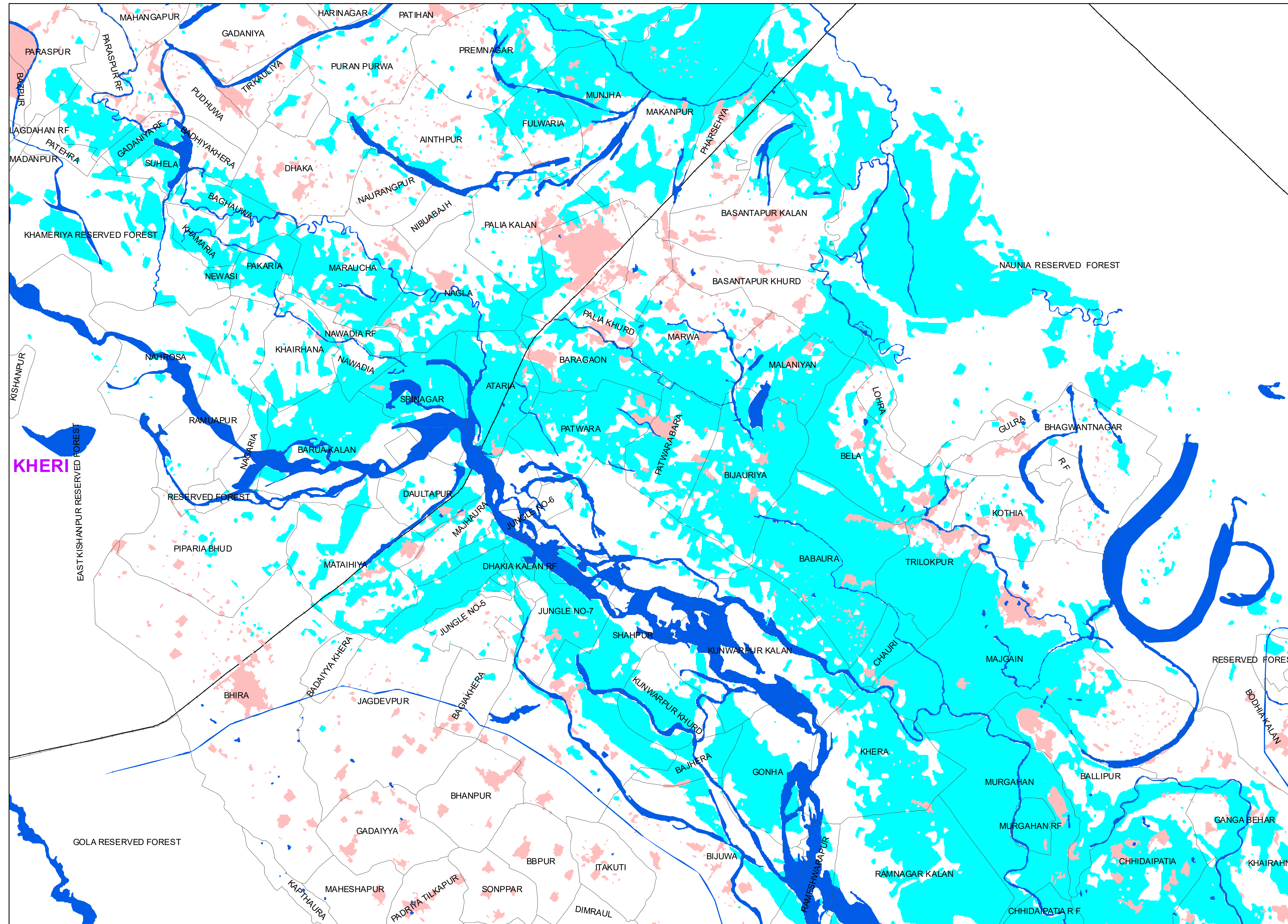
Pre Flood Data  
Satellite:RISAT-1A MRS SAR  
May-2024

Post Flood Data  
Satellite:Multi mission satellite data  
Date of Pass:08-07-2024 to14-07-2024

## Reference Data Used

NRSC Landuse/Landcover SISDP  
Phase-II Data of 2024, Bhuvan  
Geospatial Legacy Data

Disaster Management Support Group  
Remote Sensing Application Area  
National Remote Sensing Centre, ISRO  
Dept. of Space, Govt. of India  
Hyderabad- 500 037  
E-Mail: [flood@nrsc.gov.in](mailto:flood@nrsc.gov.in)  
[www.nrsc.gov.in](http://www.nrsc.gov.in)










### Satellite Observations:

This map shows the cumulative flood inundation map derived from the multi-sensor satellite data acquired during 08-14th July, 2024.

Note : This is a rapid assessment using satellite data sets. This may include the flood inundation / Standing water in low lying areas due to heavy rainfall scenario/ high mosit areas immediately after the rain events. Field verification not done.

### Legend

-  Village Boundary
  River/Water Body/Canal (Reference)
  Settlements
  District Boundary
  Rail Network
  Road
  Flood Inundation



# Cumulative Flood Inundation Areas in Parts of Kheri District, Uttar Pradesh State

Based on the analysis of multi mission Satellite Images during 08-07-2024 to 14-07-2024

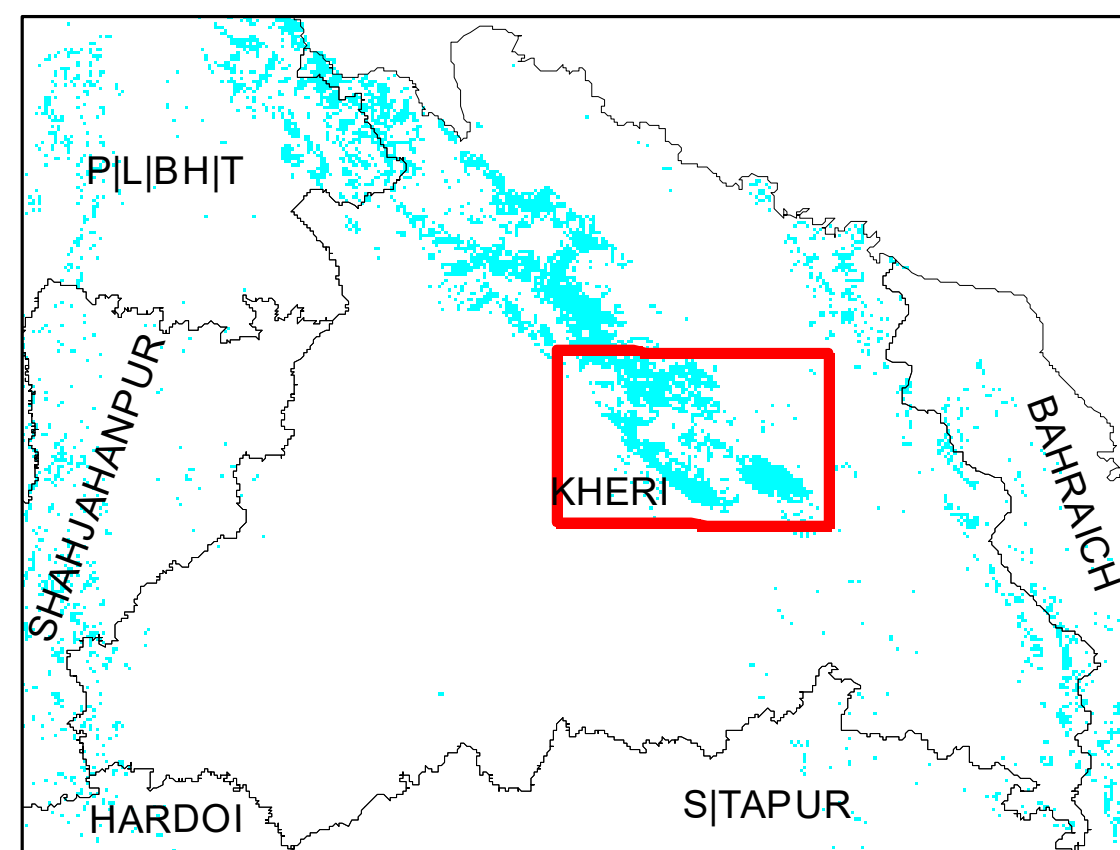
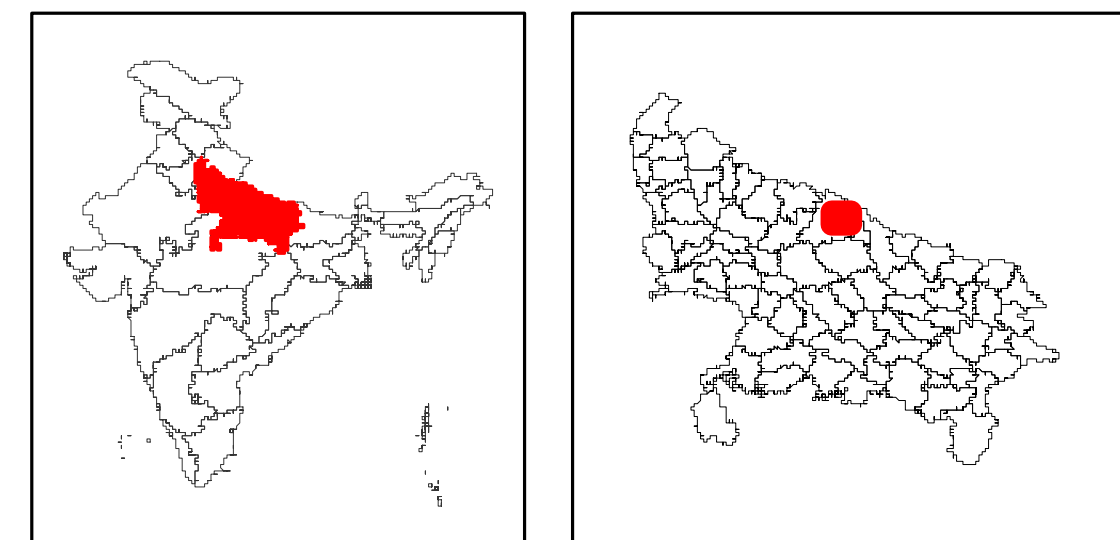
For Official Use



Map ID:

2024/FL/UP/16d3/08-14072024

Date of Issue: 17.07.2024



Location Map

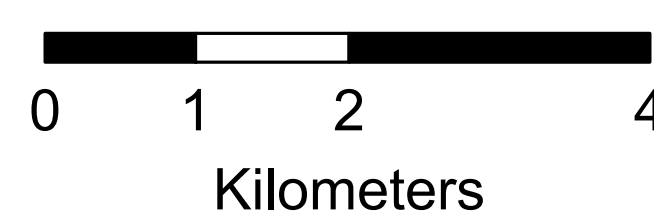
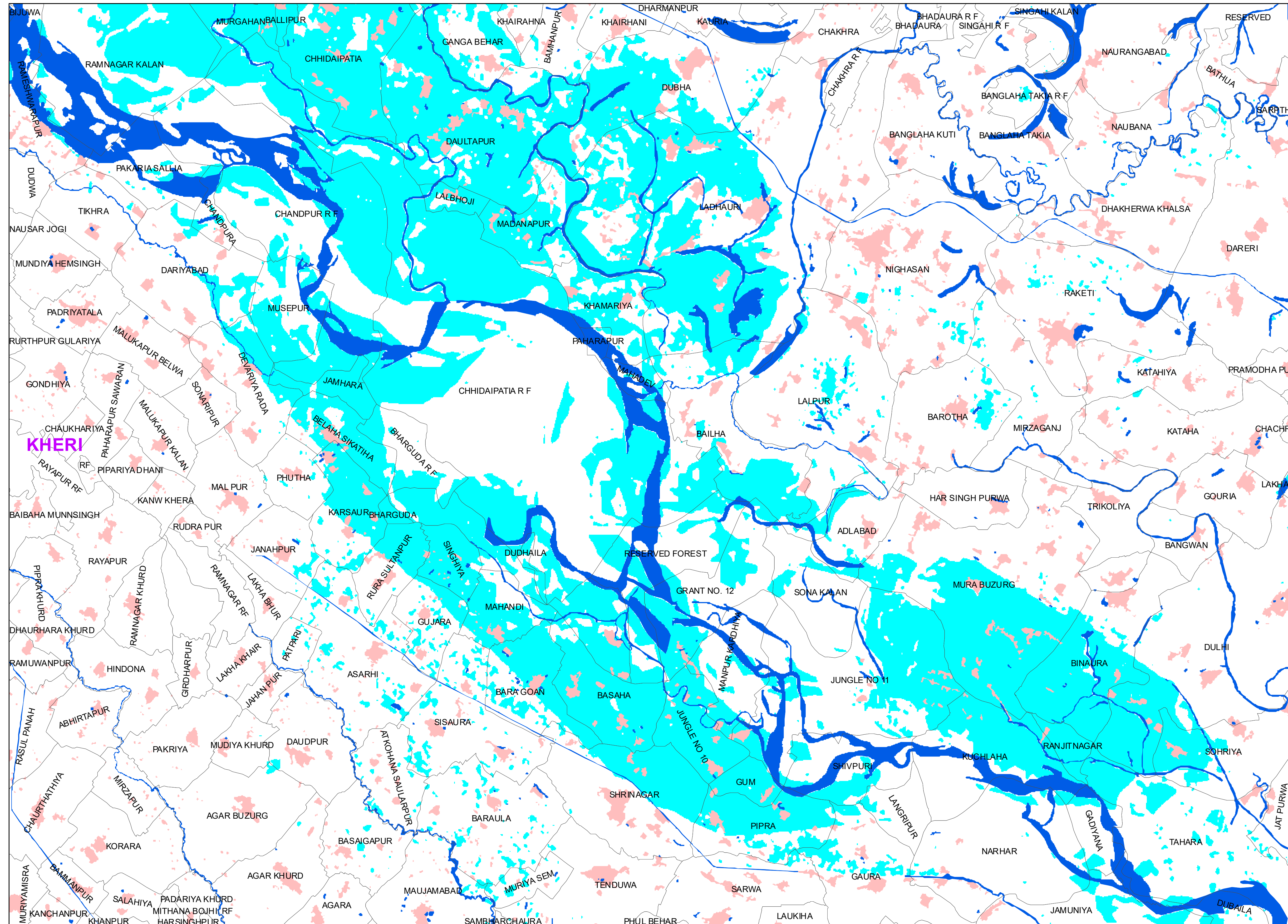
## Satellite Data Used

Pre Flood Data  
Satellite:RISAT-1A MRS SAR  
May-2024

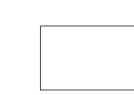
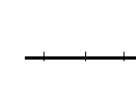





Post Flood Data  
Satellite:Multi mission satellite data  
Date of Pass:08-07-2024 to14-07-2024

## Reference Data Used

NRSC Landuse/Landcover SISDP  
Phase-II Data of 2024, Bhuvan  
Geospatial Legacy Data



## Legend

- |  |  |
|--|--|
|  Village Boundary                   |  Rail Network     |
|  River/Water Body/Canal (Reference) |  Road             |
|  Settlements                        |  Flood Inundation |
|  District Boundary                  |  |

## Satellite Observations:

This map shows the cumulative flood inundation map derived from the multi-sensor satellite data acquired during 08-14th July, 2024.

Note : This is a rapid assessment using satellite data sets. This may include the flood inundation / Standing water in low lying areas due to heavy rainfall scenario/ high moist areas immediately after the rain events. Field verification not done.

Disaster Management Support Group  
Remote Sensing Application Area  
National Remote Sensing Centre, ISRO  
Dept. of Space, Govt. of India  
Hyderabad- 500 037  
E-Mail: [flood@nrsc.gov.in](mailto:flood@nrsc.gov.in)  
[www.nrsc.gov.in](http://www.nrsc.gov.in)