

Cumulative Flood Inundation Areas in Parts of Sitapur District, Uttar Pradesh State

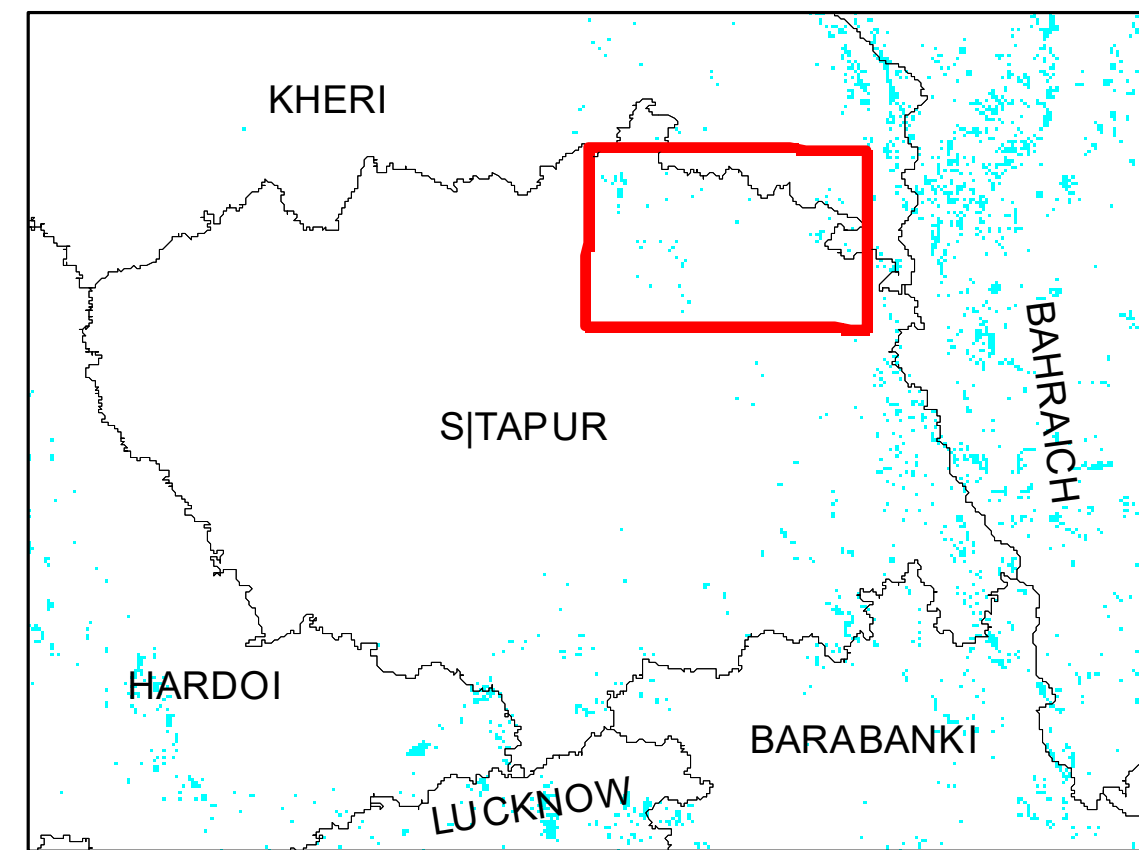
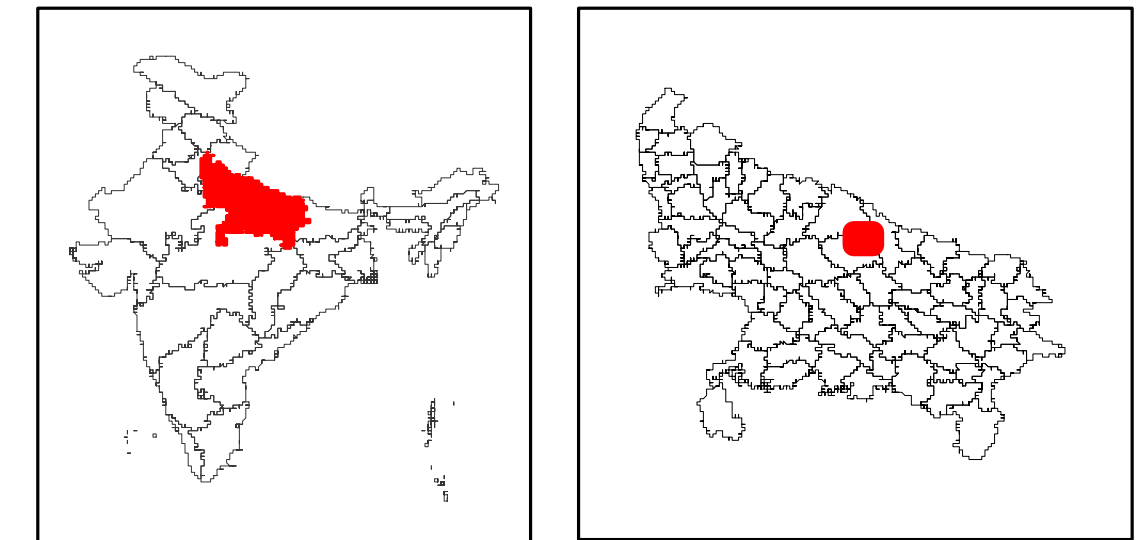
Based on the analysis of multi mission Satellite Images during 08-07-2024 to 14-07-2024



Map ID:

2024/FL/UP/16i1/08-14072024

Date of Issue: 17.07.2024



Location Map

Satellite Data Used

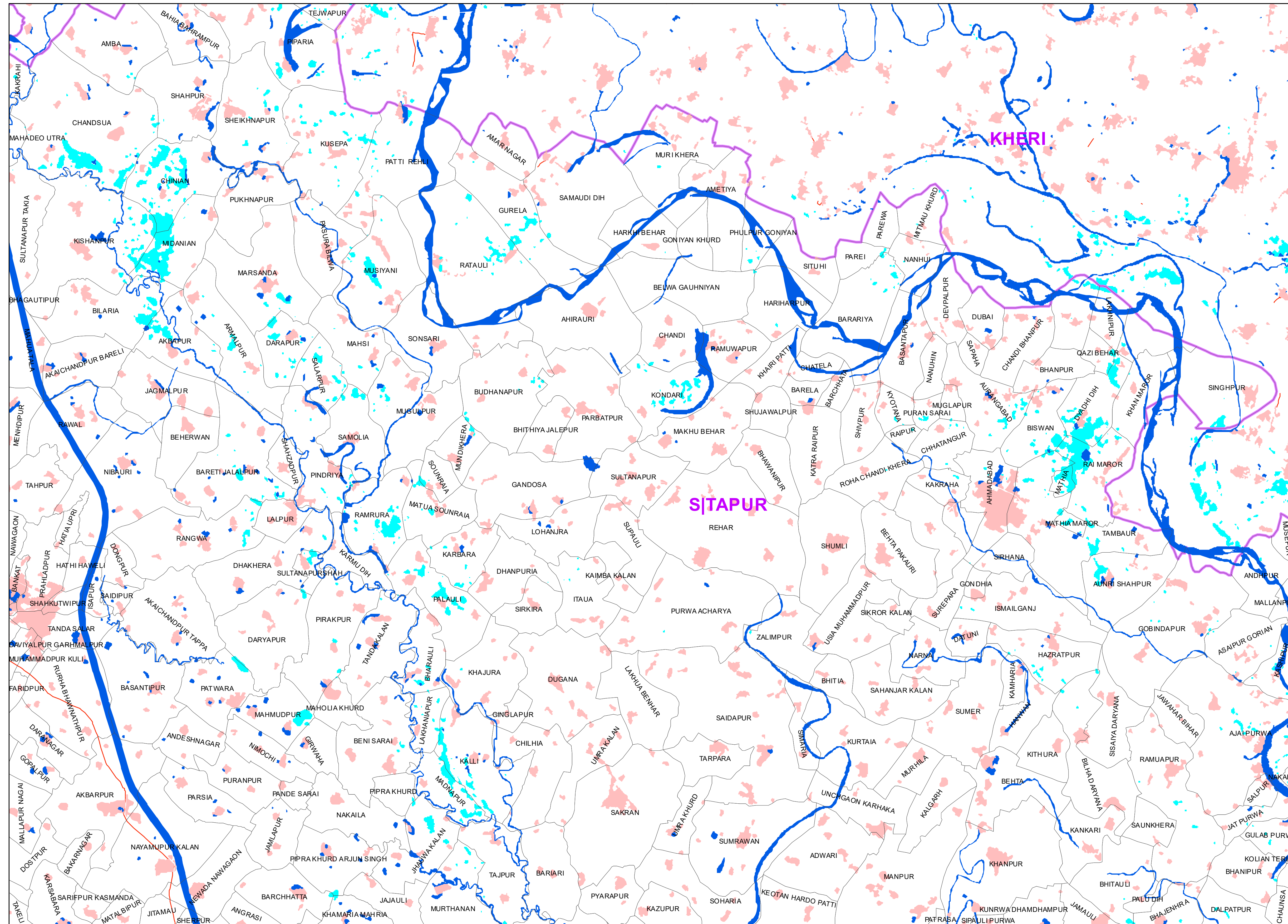
Pre Flood Data
Satellite:RISAT-1A MRS SAR
May-2024

Post Flood Data
Satellite:Multi mission satellite data
Date of Pass:08-07-2024 to14-07-2024

Reference Data Used

NRSC Landuse/Landcover SISDP
Phase-II Data of 2024, Bhuvan
Geospatial Legacy Data

Disaster Management Support Group
Remote Sensing Application Area
National Remote Sensing Centre, ISRO
Dept. of Space, Govt. of India
Hyderabad- 500 037
E-Mail: flood@nrsc.gov.in
www.nrsc.gov.in










Satellite Observations:

This map shows the cumulative flood inundation map derived from the multi-sensor satellite data acquired during 08-14th July, 2024.

Note : This is a rapid assessment using satellite data sets. This may include the flood inundation / Standing water in low lying areas due to heavy rainfall scenario/ high mosit areas immediately after the rain events. Field verification not done.

Legend

-  Village Boundary
  Rail Network
-  River/Water Body/Canal (Reference)
  Road
-  Settlements
  Flood Inundation
-  District Boundary

Cumulative Flood Inundation Areas in Parts of Sitapur District, Uttar Pradesh State

Based on the analysis of multi mission Satellite Images during 08-07-2024 to 14-07-2024

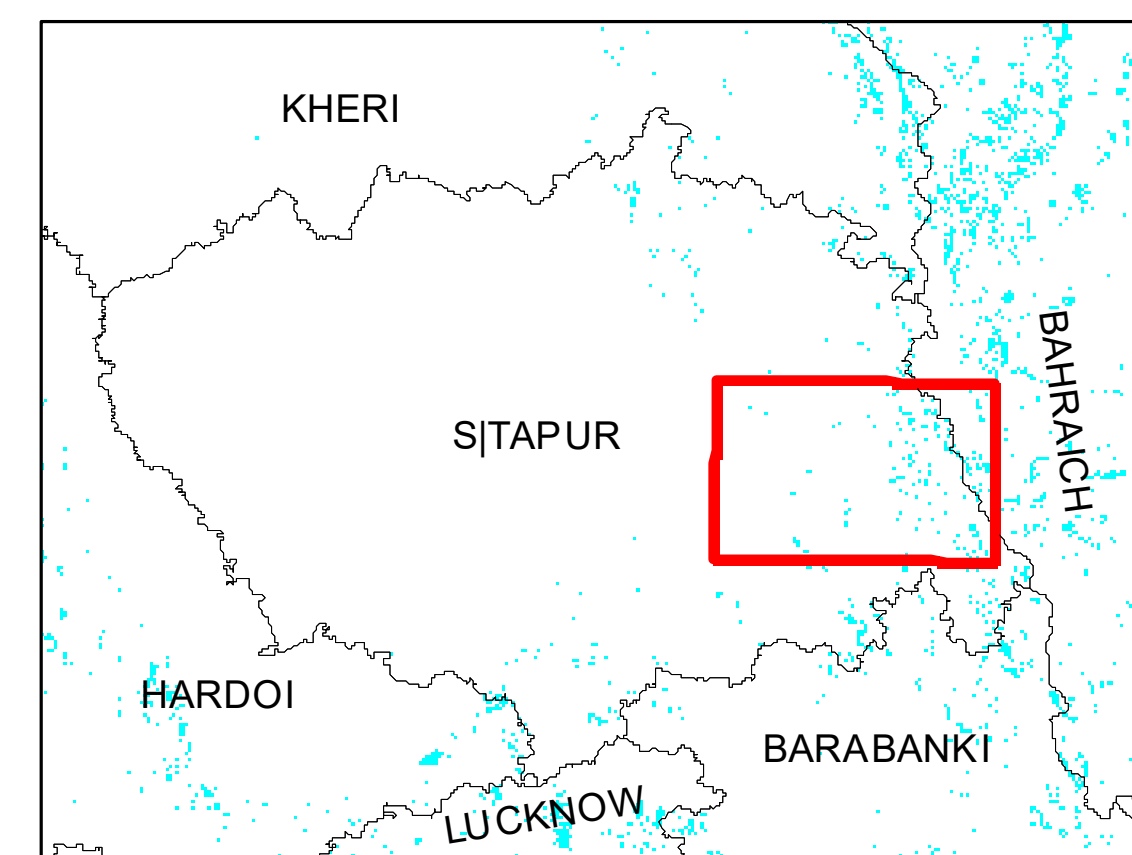
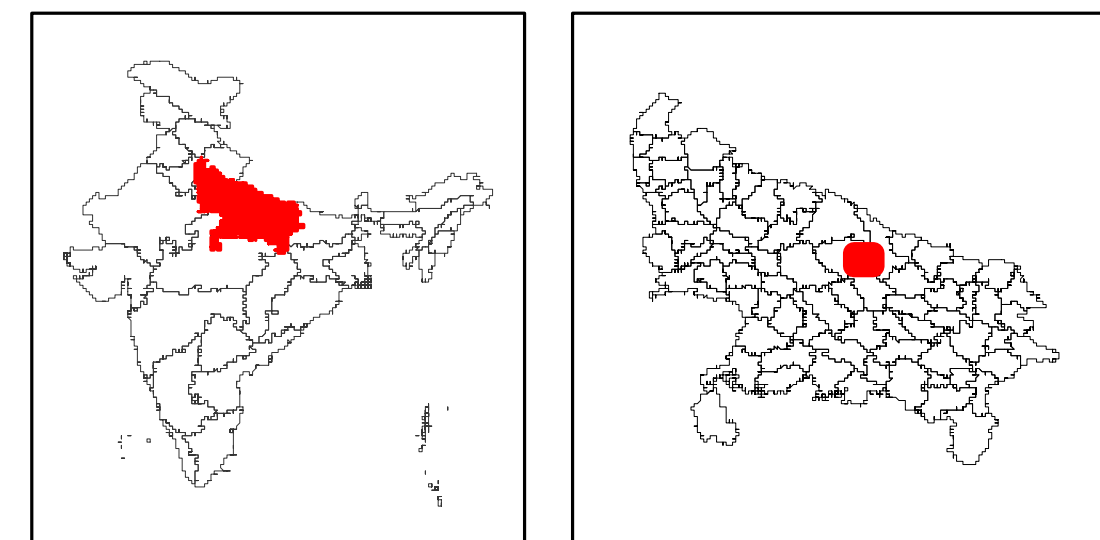
For Official Use



Map ID:

2024/FL/UP/16i2/08-14072024

Date of Issue: 17.07.2024



Location Map

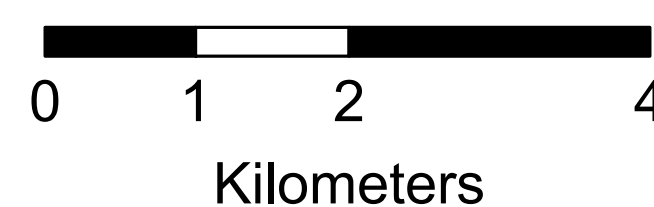
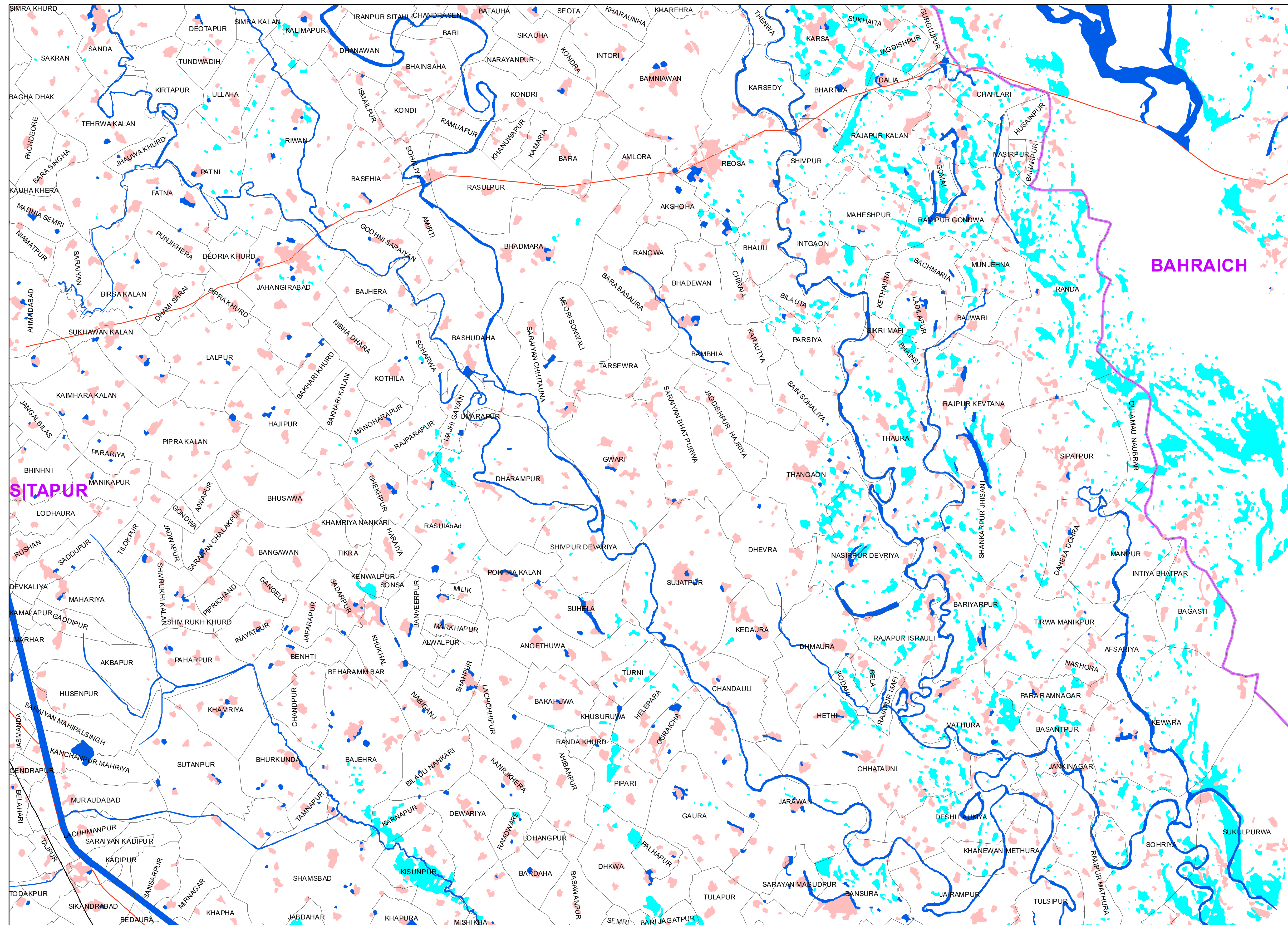
Satellite Data Used

Pre Flood Data
Satellite:RISAT-1A MRS SAR
May-2024


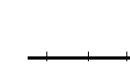





Post Flood Data
Satellite:Multi mission satellite data
Date of Pass:08-07-2024 to14-07-2024

Reference Data Used

NRSC Landuse/Landcover SISDP
Phase-II Data of 2024, Bhuvan
Geospatial Legacy Data



Legend

- | | |
|--|--|
|  Village Boundary |  Rail Network |
|  River/Water Body/Canal (Reference) |  Road |
|  Settlements |  Flood Inundation |
|  District Boundary | |

Satellite Observations:

This map shows the cumulative flood inundation map derived from the multi-sensor satellite data acquired during 08-14th July, 2024.

Note : This is a rapid assessment using satellite data sets. This may include the flood inundation / Standing water in low lying areas due to heavy rainfall scenario/ high moist areas immediately after the rain events. Field verification not done.

Disaster Management Support Group
Remote Sensing Application Area
National Remote Sensing Centre, ISRO
Dept. of Space, Govt. of India
Hyderabad- 500 037
E-Mail: flood@nrsc.gov.in
www.nrsc.gov.in

Cumulative Flood Inundation Areas in Parts of Sitapur District, Uttar Pradesh State

Based on the analysis of multi mission Satellite Images during 08-07-2024 to 14-07-2024

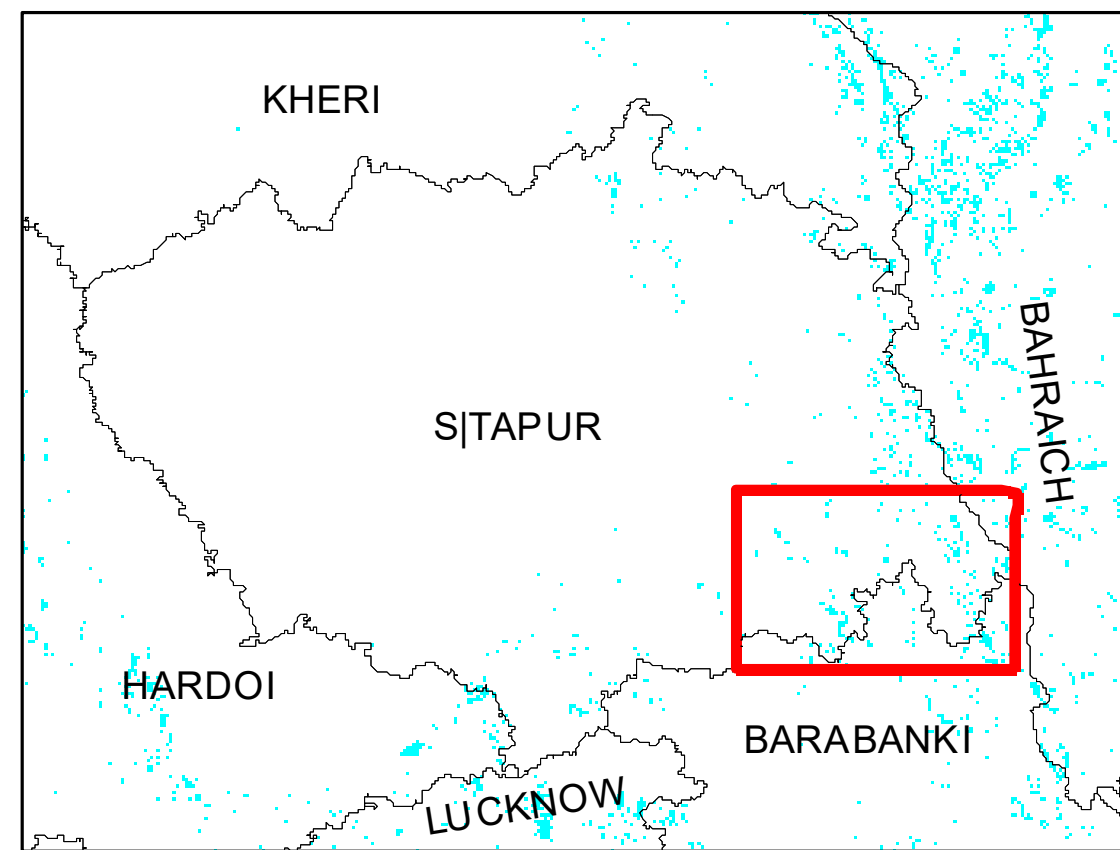
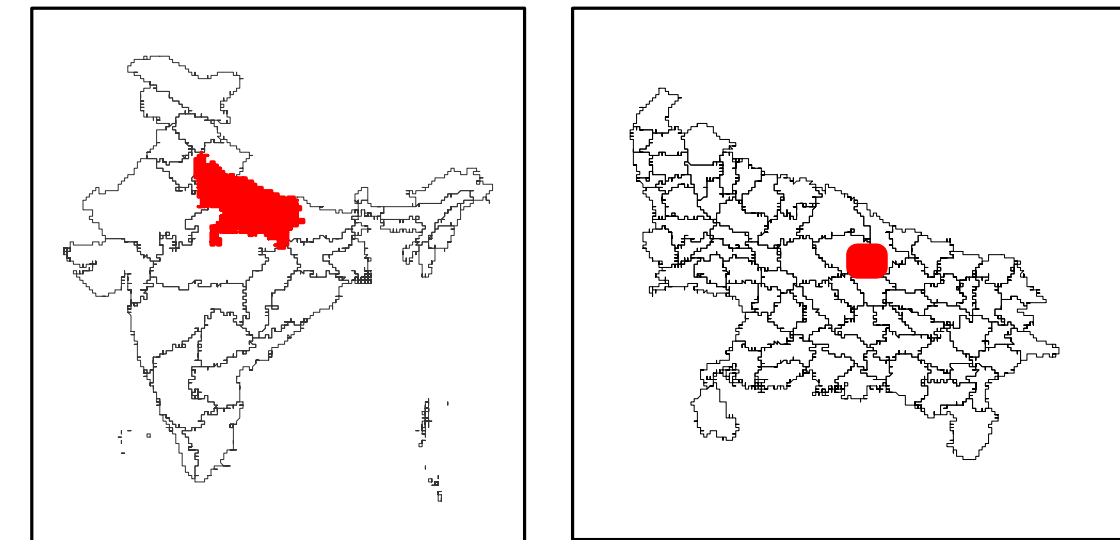
For Official Use



Map ID:

2024/FL/UP/16i3/08-14072024

Date of Issue: 17.07.2024



Location Map

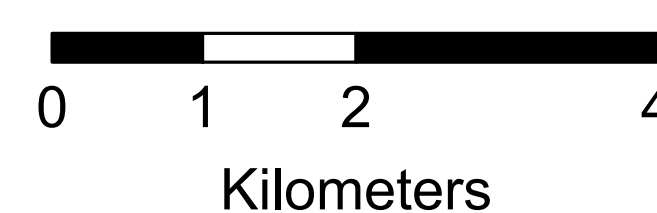
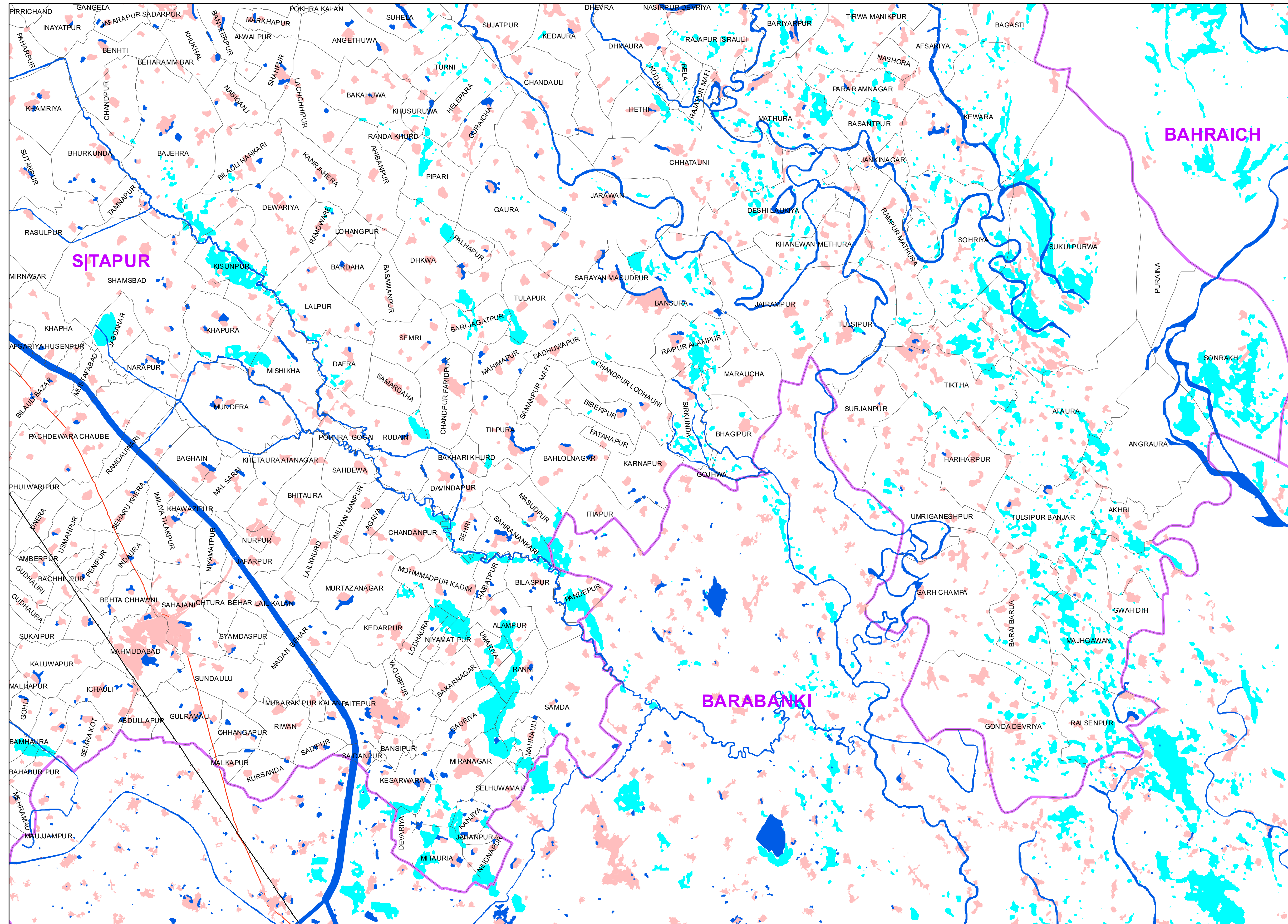
Satellite Data Used

Pre Flood Data
Satellite:RISAT-1A MRS SAR
May-2024


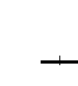





Post Flood Data
Satellite:Multi mission satellite data
Date of Pass:08-07-2024 to 14-07-2024

Reference Data Used

NRSC Landuse/Landcover SISDP
Phase-II Data of 2024, Bhuvan
Geospatial Legacy Data



Legend

- | | |
|--|--|
|  Village Boundary |  Rail Network |
|  River/Water Body/Canal (Reference) |  Road |
|  Settlements |  Flood Inundation |
|  District Boundary | |

Satellite Observations:

This map shows the cumulative flood inundation map derived from the multi-sensor satellite data acquired during 08-14th July, 2024.

Note : This is a rapid assessment using satellite data sets. This may include the flood inundation / Standing water in low lying areas due to heavy rainfall scenario/ high moist areas immediately after the rain events. Field verification not done.

Disaster Management Support Group
Remote Sensing Application Area
National Remote Sensing Centre, ISRO
Dept. of Space, Govt. of India
Hyderabad- 500 037
E-Mail: flood@nrsc.gov.in
www.nrsc.gov.in