

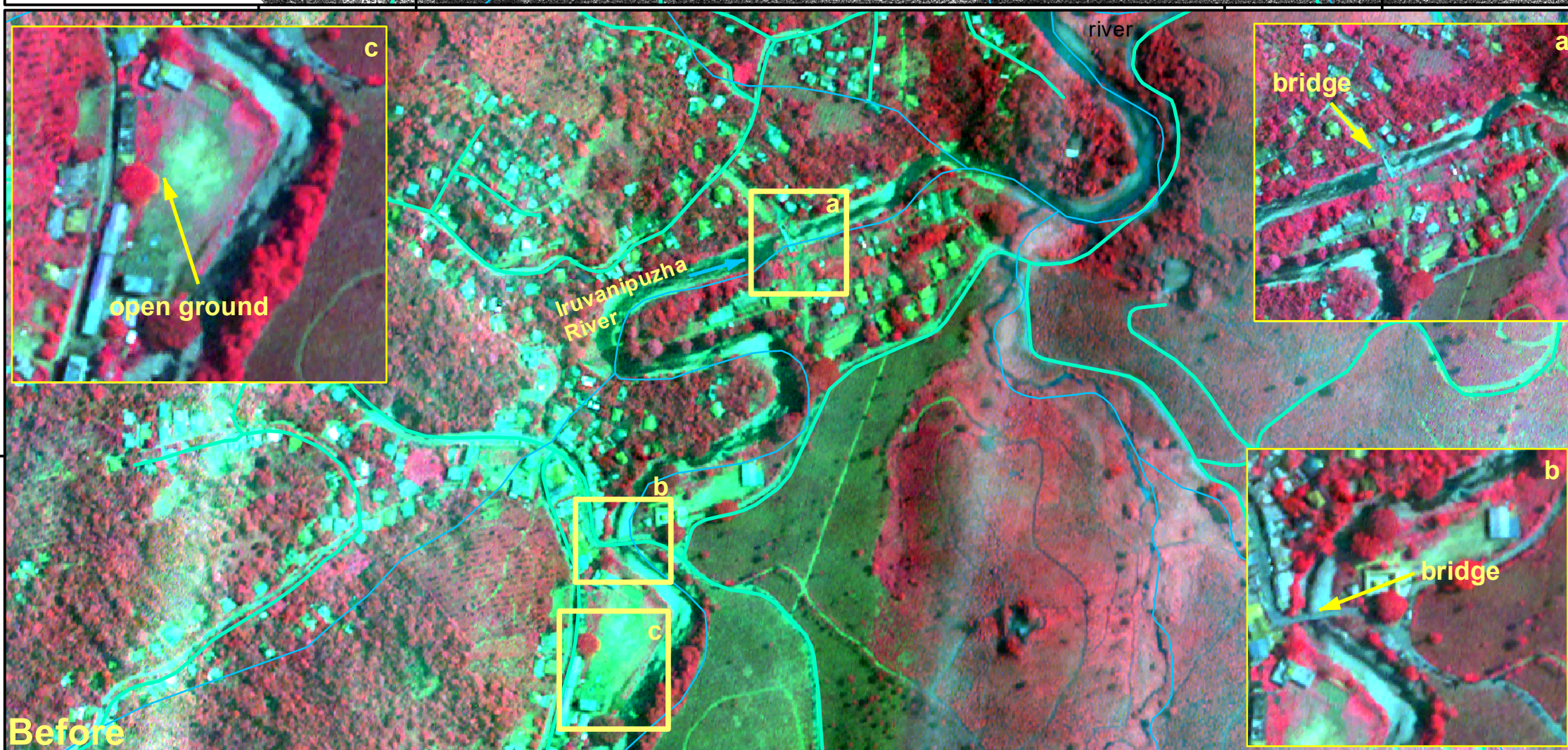
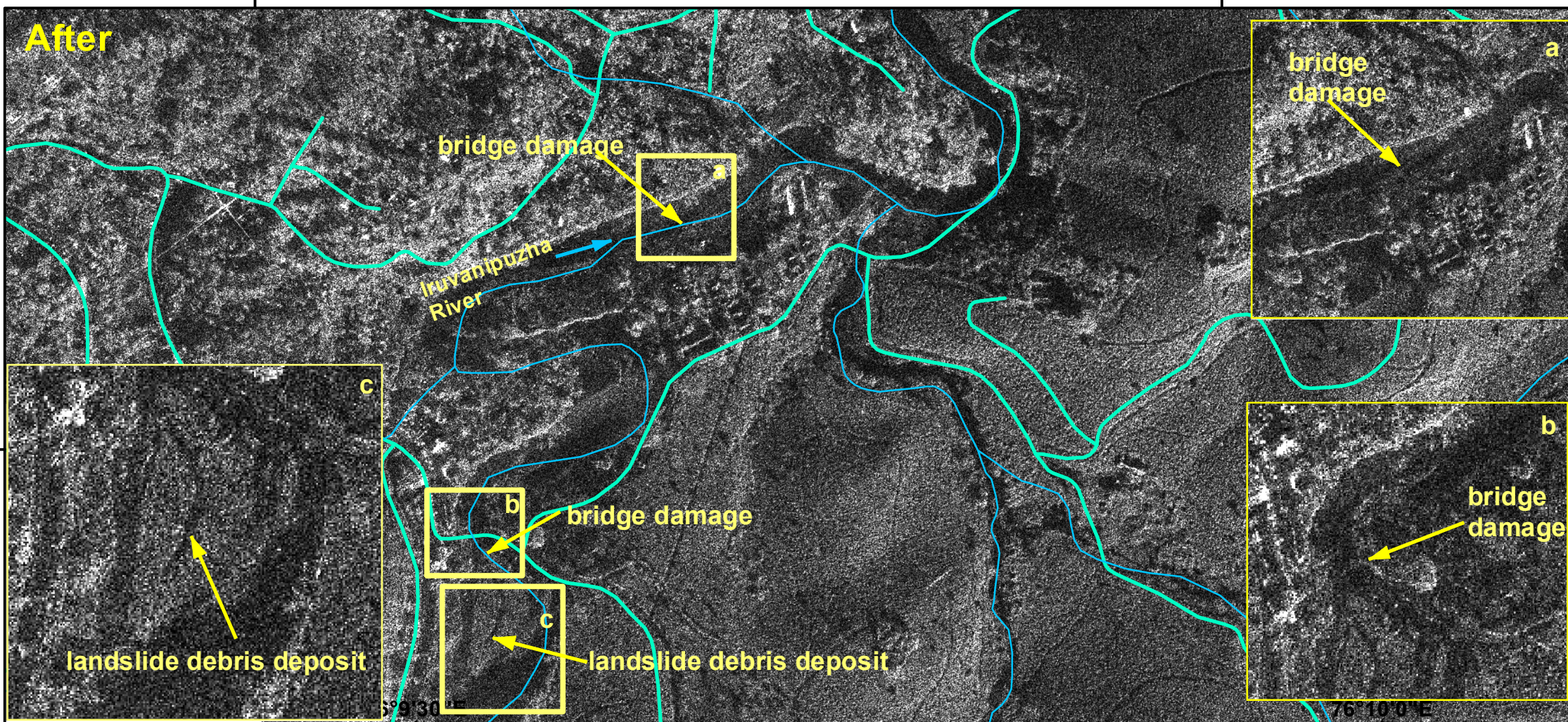
76°9'30"E

76°10'0"E

Charter Call 1029

AOI No.01

After



Before

Chooralmala, Wayanad, Kerala, India

Landslide Impact Map

Observed on 31/07/2024

Location Diagrams



Cartographic Information



Legend

Local Projection : WGS 1984 UTM Zone 43N Datum : WGS1984

Geographic projection : Lat / Lon (DMS), Datum:WGS 84

Scale : 1:5,000 for A3 prints

River

Road

Interpretation

A major debris flow was triggered by heavy rainfall in and around the Chooralmala town of Wayanad District in Kerala state of India. As per latest reports, more than 100 people are dead and many are missing. RISAT SAR images of 30 July, 2024 indicates towards the extent of damage in the region. Atleast 2 bridges crossing the Iruvanipuzha River has been washed away and large amount of debris has been deposited along the course of the river.

Data Sources

Pre Event Image : Cartosat 3 (Mx) 22 May, 2023

Post Event : VHR RISAT SAR 30 July, 2024

images (C) NRSC/ISRO

Frame Work

The best effort rapid mapping product is elaborated within a very short time frame, optimising the available material, and has been quality checked as per NRSC/ISRO procedures.

All geographic informations has limitations due to scale, resolution, date and interpretation of the original source material. No liability concerning the content or the use thereof is assured by the producer.

Note: When publishing this map as part of any report, source may be indicated as "LANDSLIDE OCCURRED IN CHOORLAMALA TOWN, WAYANAD DISTRICT, KERALA, INDIA (30 JULY 2024)" dated 31-07-2024, NRSC/ISRO, Hyderabad.

E-mail: gdgsg@nrsc.gov.in

