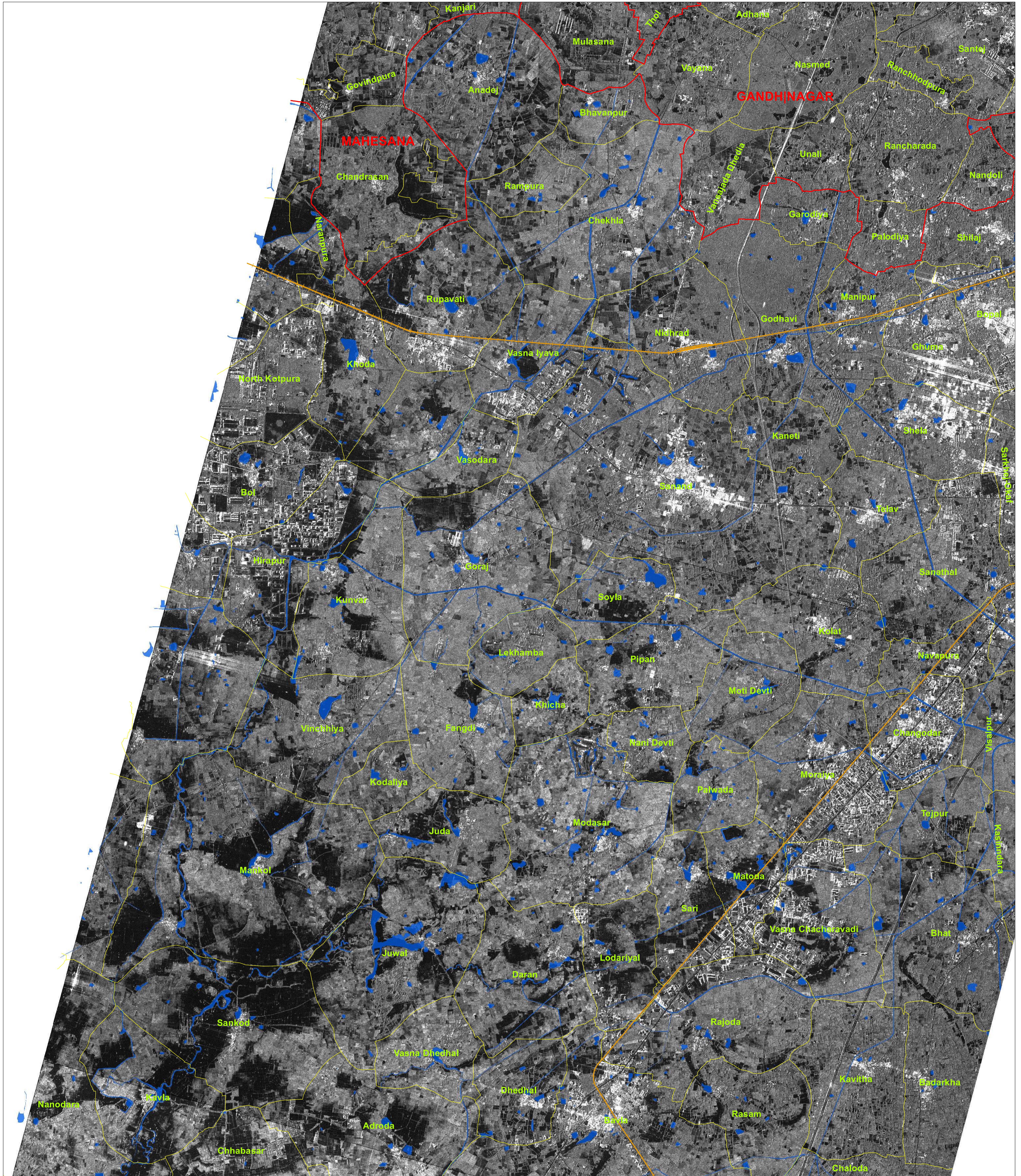


View of High Resolution Satellite Image from  
RISAT-1A FRS SAR- 30-08-2024 (0600 Hrs IST)

Map ID: 2024/FL/GJ/VAP/3a/30082024  
Date of Issue: 31.08.2024



0 1 2 4

Kilometers

**Legend**

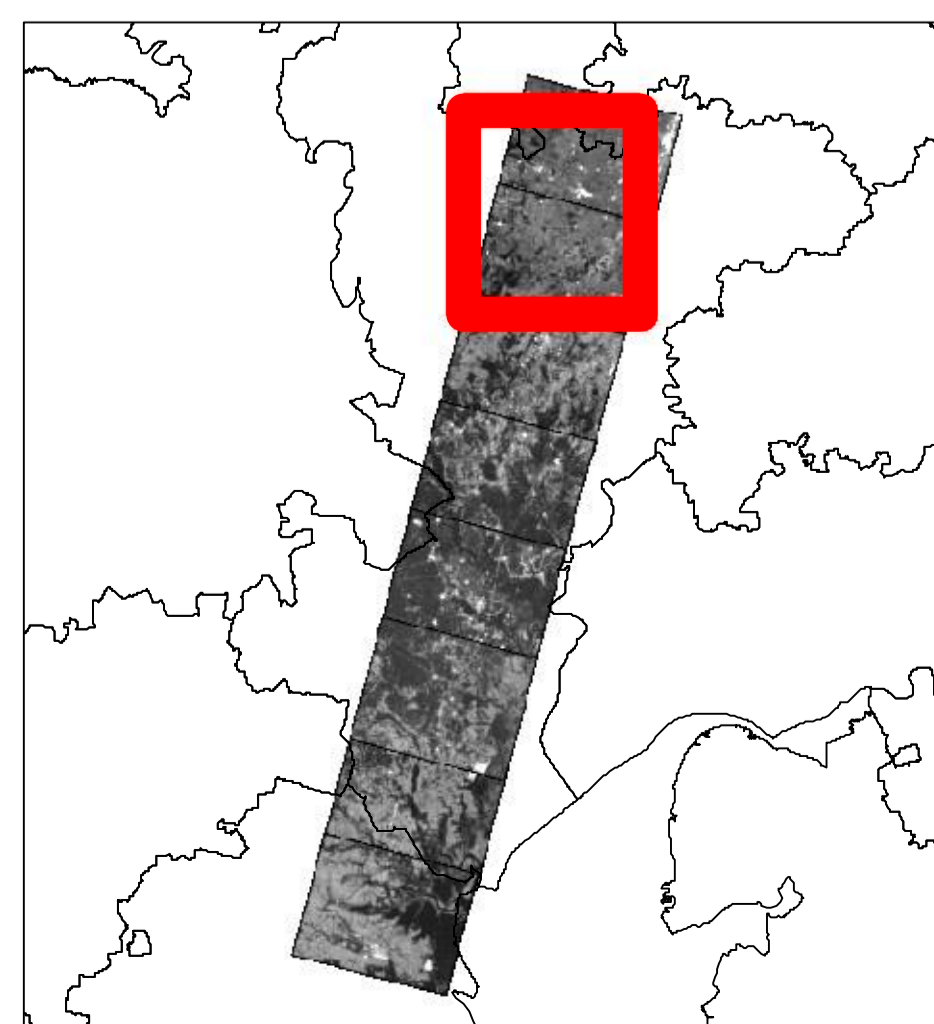
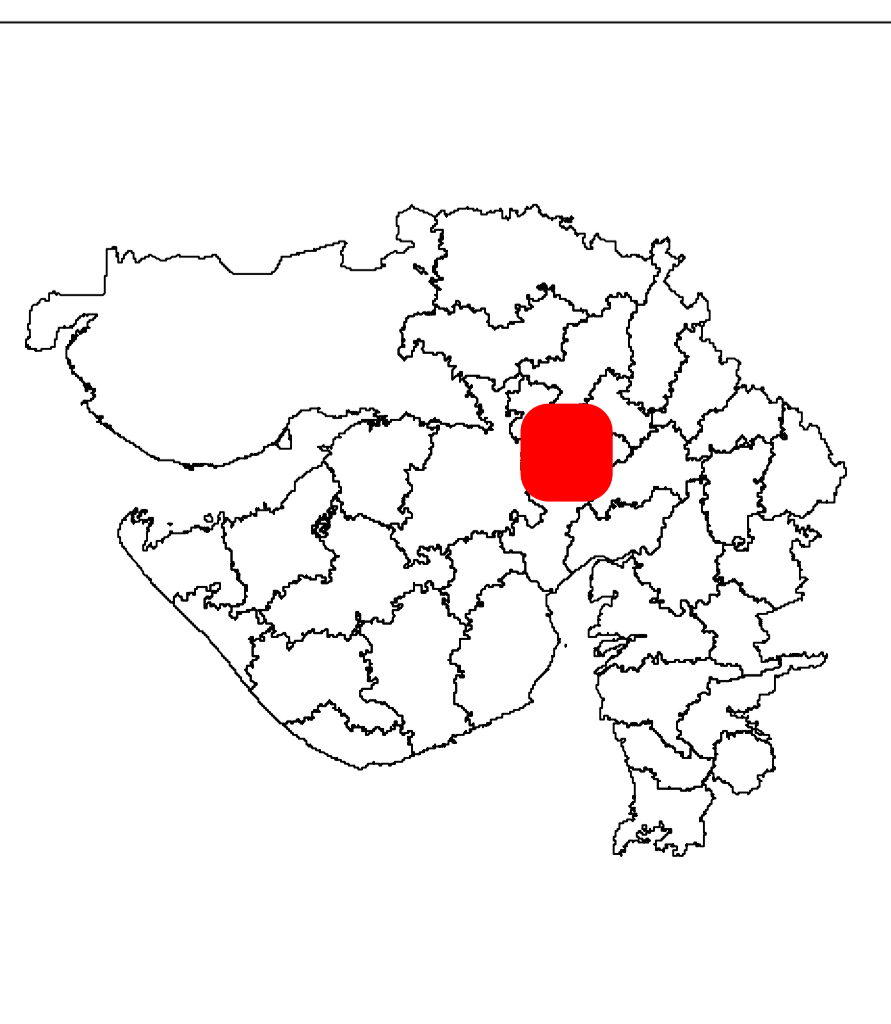
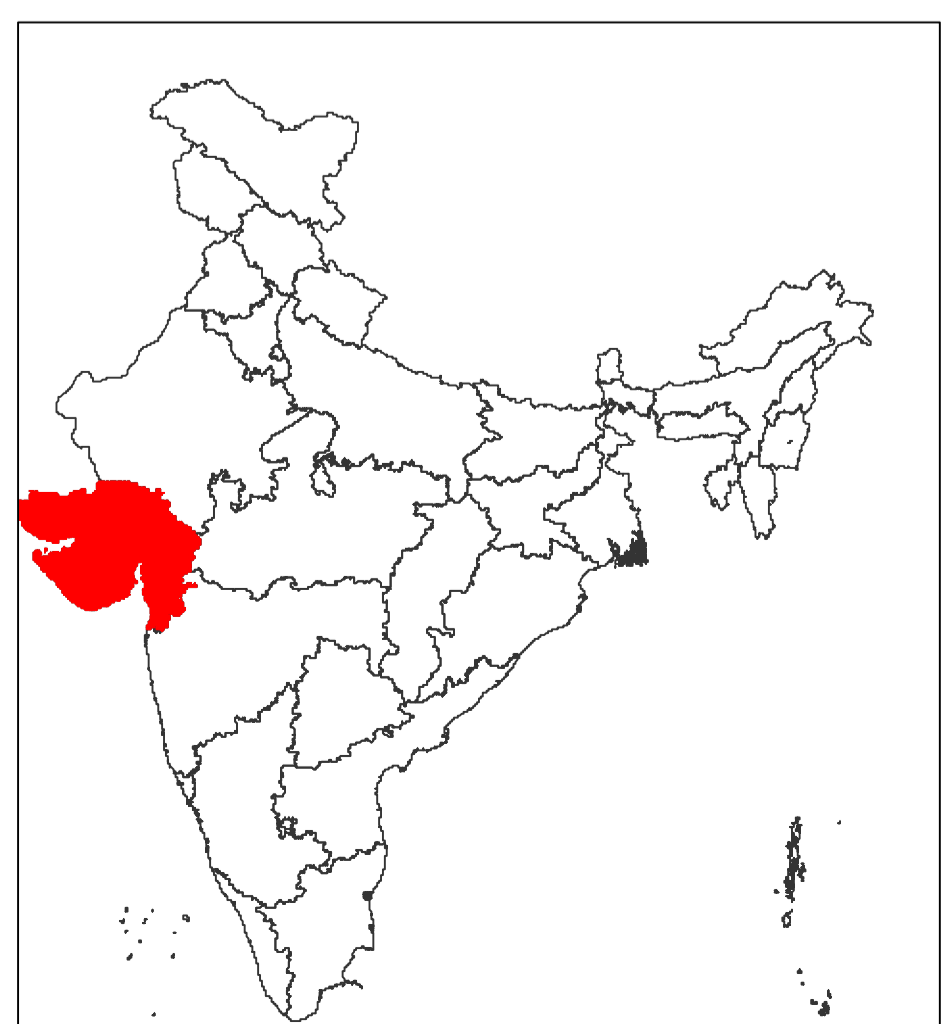
- District Boundary
- Village Boundary
- Railway
- River/Waterbodies (Reference)

Note : Map represents the high resolution microwave satellite image showing rain affected areas which are appearing in dark black colour. This map is self explanatory when it is looked at each village portion, where fields are with standing water after the heavy rain.

**Reference Data Used**

NRSC Landuse/Landcover SISDP  
Phase-II Data of 2024, Bhuvan  
Geospatial Legacy Data

Disaster Management Support Group  
Remote Sensing Applications Area  
National Remote Sensing Centre, ISRO  
Dept. of Space, Govt. of India  
Hyderabad- 500 037  
E-Mail: [flood@nrsc.gov.in](mailto:flood@nrsc.gov.in)  
[www.nrsc.gov.in](http://www.nrsc.gov.in)

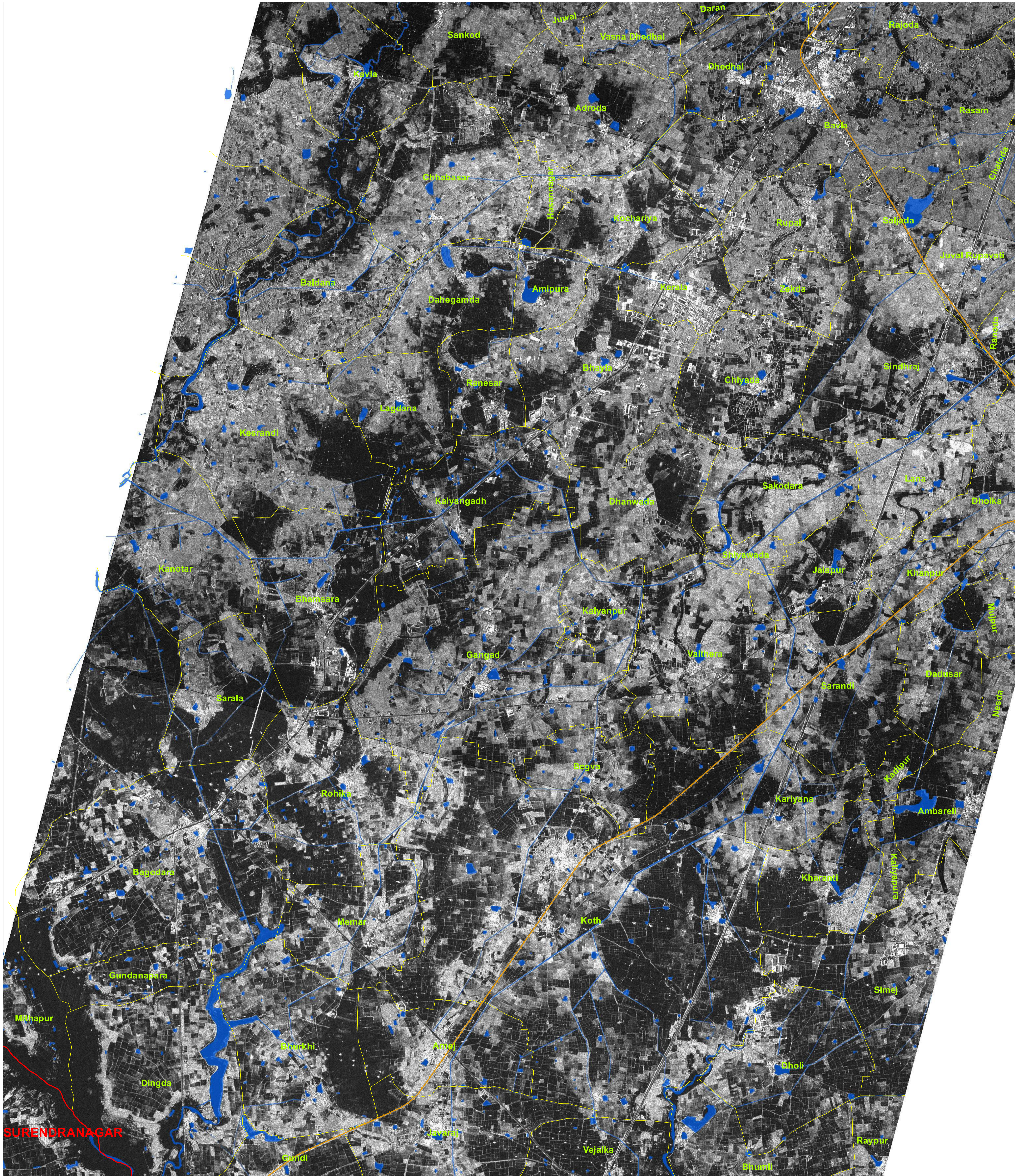




## View of High Resolution Satellite Image from RISAT-1A FRS SAR- 30-08-2024 (0600 Hrs IST)

Map ID: 2024/FL/GJ/VAP/3b/30082024

Date of Issue: 31.08.2024



SURENDRANAGAR

0 1 2 4

Kilometers

### Legend

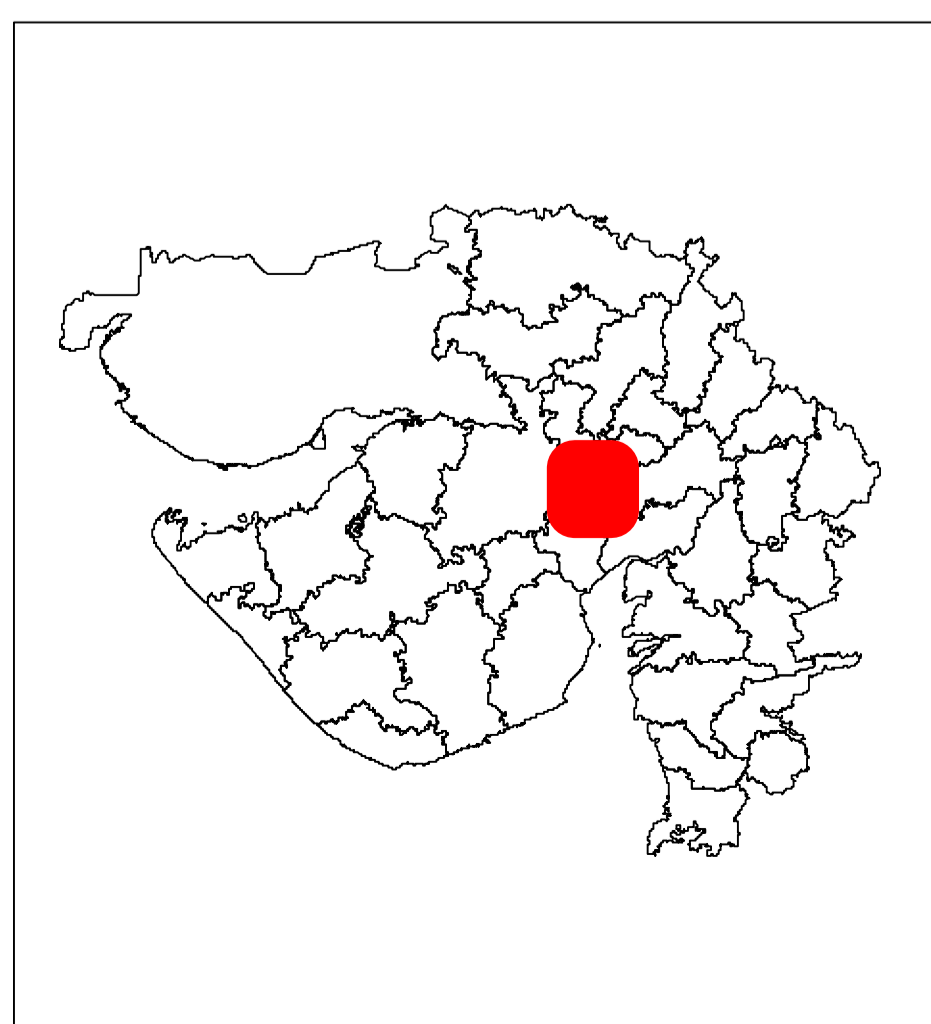
- District Boundary
- Village Boundary
- Railway
- River/Waterbodies (Reference)

Note : Map represents the high resolution microwave satellite image showing rain affected areas which are appearing in dark black colour. This map is self explanatory when it is looked at each village portion, where fields are with standing water after the heavy rain.

### Reference Data Used

NRSC Landuse/Landcover SISDP  
Phase-II Data of 2024, Bhuvan  
Geospatial Legacy Data

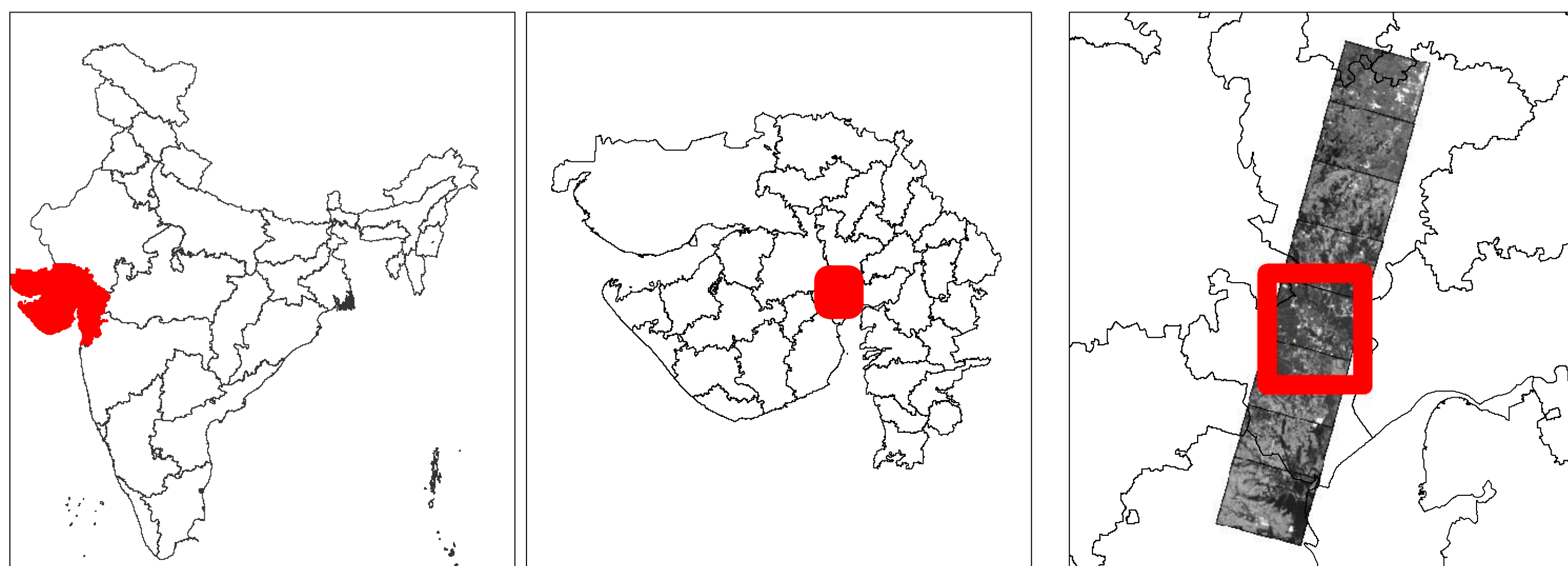
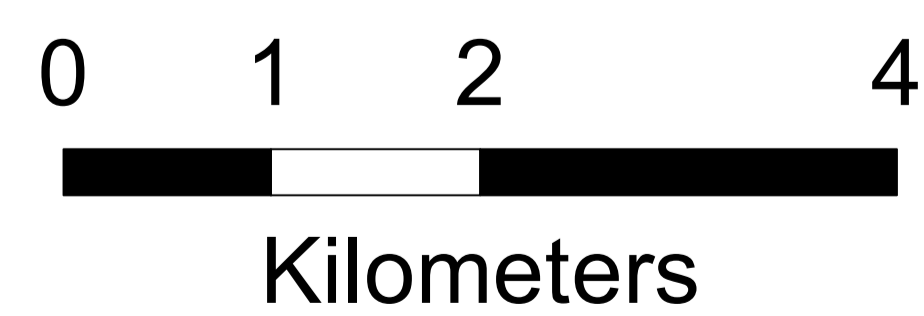
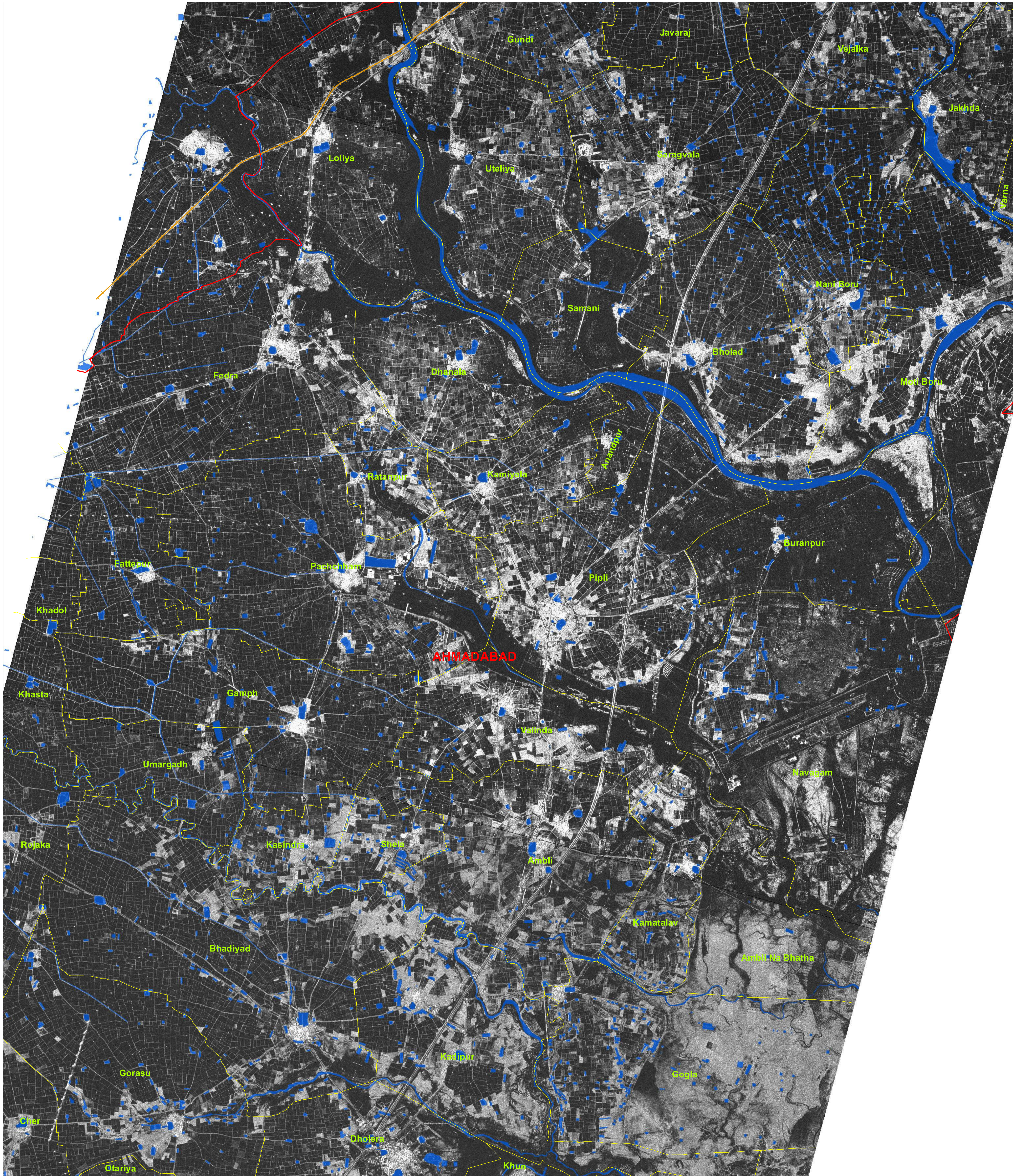
Disaster Management Support Group  
Remote Sensing Applications Area  
National Remote Sensing Centre, ISRO  
Dept. of Space, Govt. of India  
Hyderabad- 500 037  
E-Mail: [flood@nrsc.gov.in](mailto:flood@nrsc.gov.in)  
[www.nrsc.gov.in](http://www.nrsc.gov.in)





View of High Resolution Satellite Image from  
RISAT-1A FRS SAR- 30-08-2024 (0600 Hrs IST)

Map ID: 2024/FL/GJ/VAP/3c/30082024  
Date of Issue: 31.08.2024



**Legend**

- District Boundary
- Village Boundary
- Railway
- River/Waterbodies (Reference)

Note : Map represents the high resolution microwave satellite image showing rain affected areas which are appearing in dark black colour. This map is self explanatory when it is looked at each village portion, where fields are with standing water after the heavy rain.

**Reference Data Used**

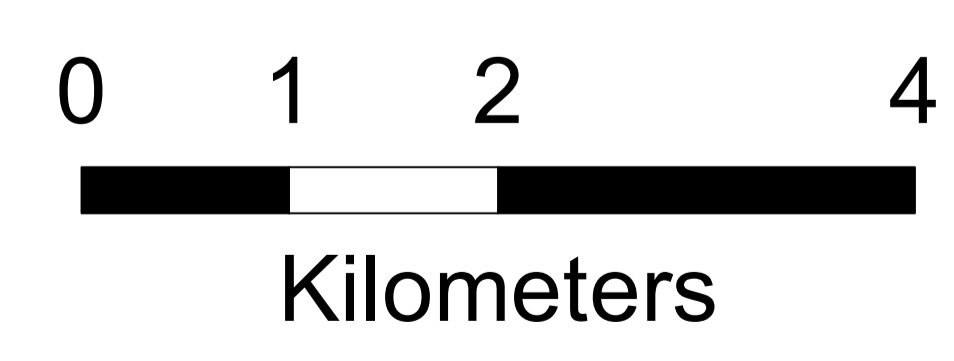
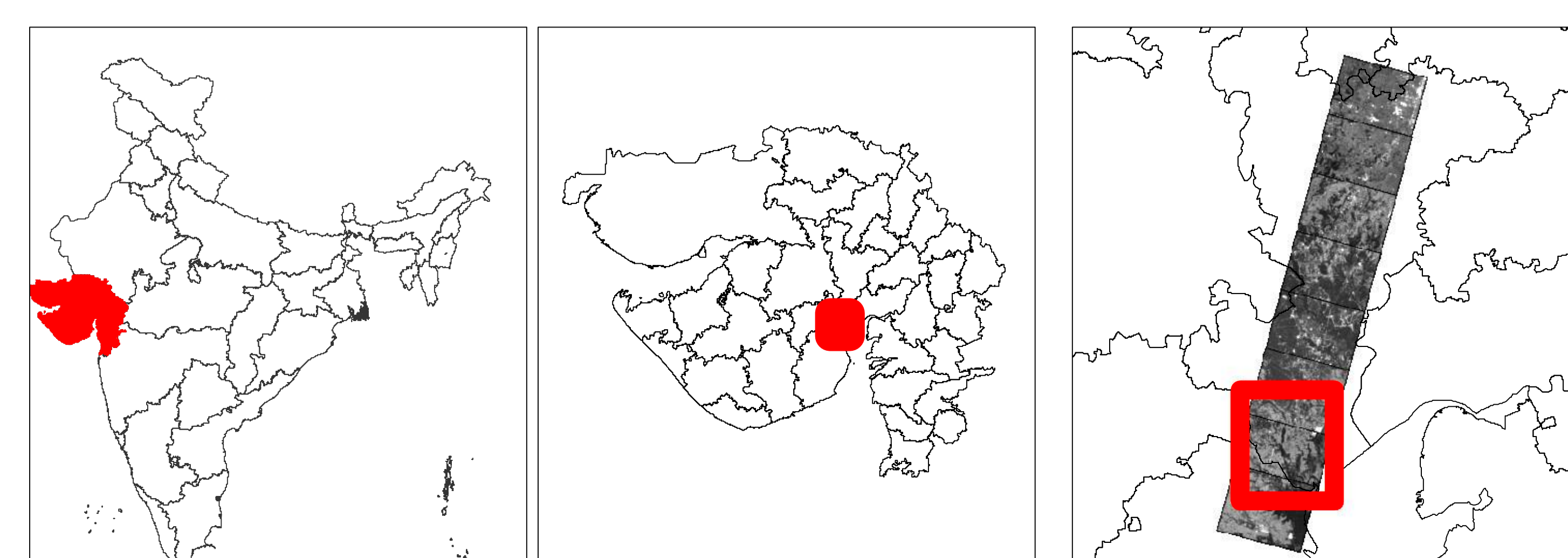
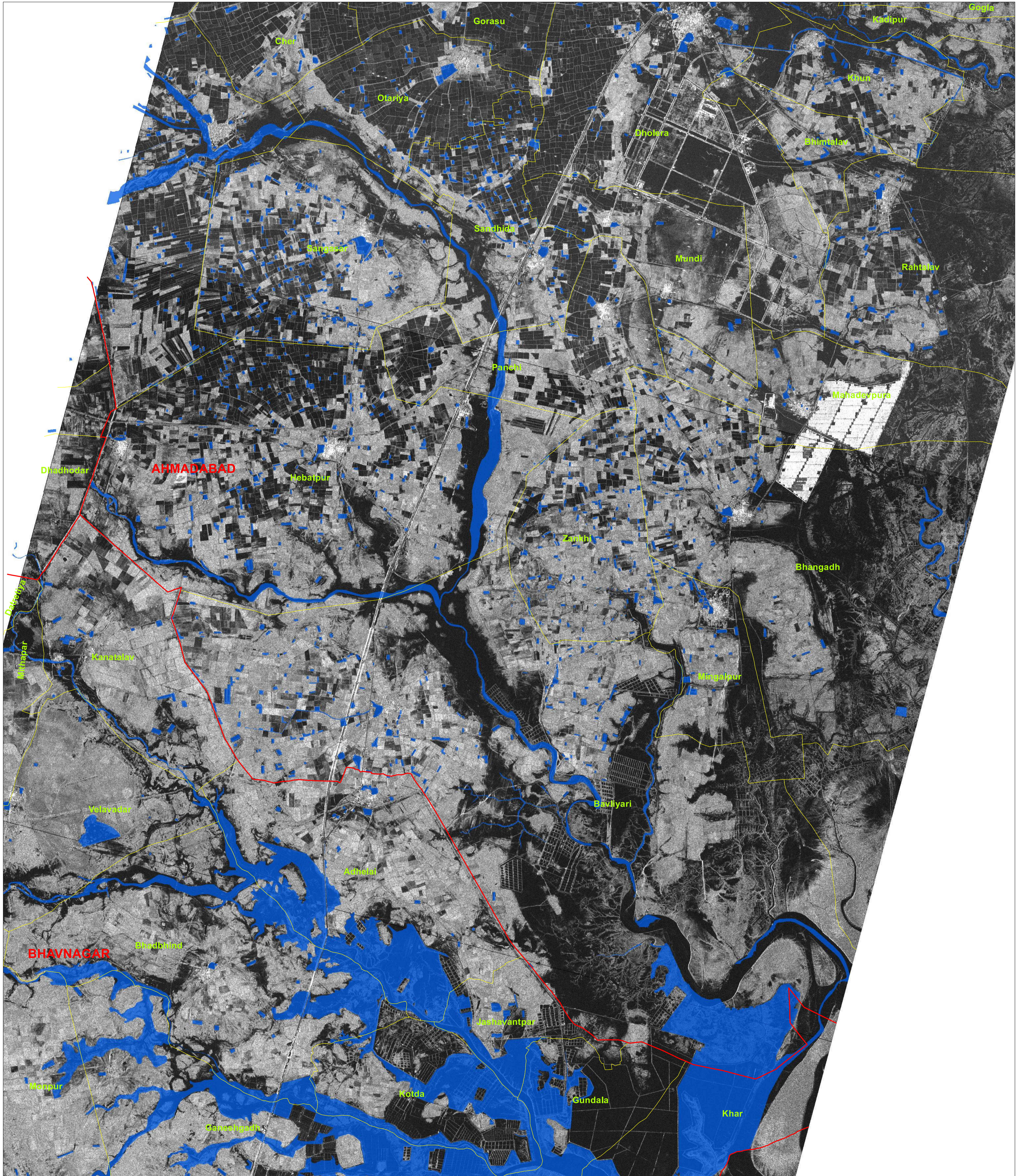
NRSC Landuse/Landcover SISDP  
Phase-II Data of 2024, Bhuvan  
Geospatial Legacy Data

Disaster Management Support Group  
Remote Sensing Applications Area  
National Remote Sensing Centre, ISRO  
Dept. of Space, Govt. of India  
Hyderabad- 500 037  
E-Mail: [flood@nrsc.gov.in](mailto:flood@nrsc.gov.in)  
[www.nrsc.gov.in](http://www.nrsc.gov.in)



## View of High Resolution Satellite Image from RISAT-1A FRS SAR- 30-08-2024 (0600 Hrs IST)

Map ID: 2024/FL/GJ/VAP/3d/30082024  
Date of Issue: 31.08.2024



**Legend**

	District Boundary		Village Boundary
	Railway		River/Waterbodies (Reference)

Note : Map represents the high resolution microwave satellite image showing rain affected areas which are appearing in dark black colour. This map is self explanatory when it is looked at each village portion, where fields are with standing water after the heavy rain.

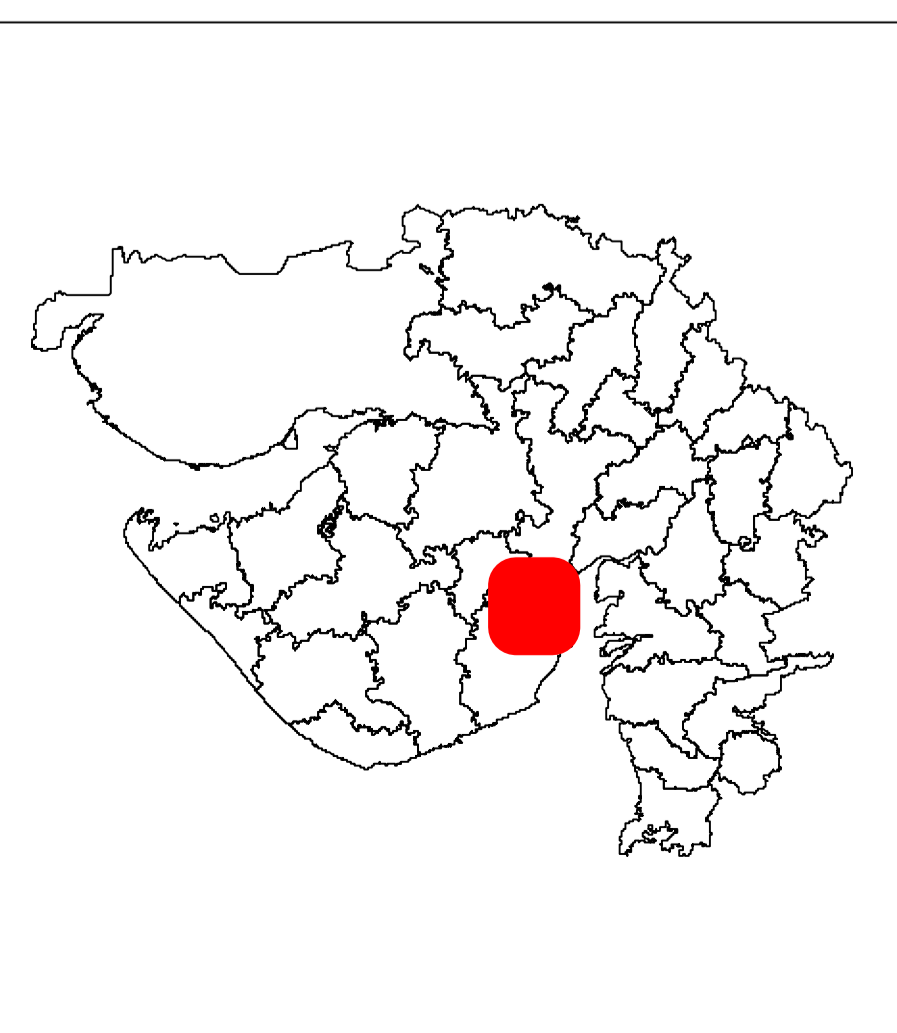
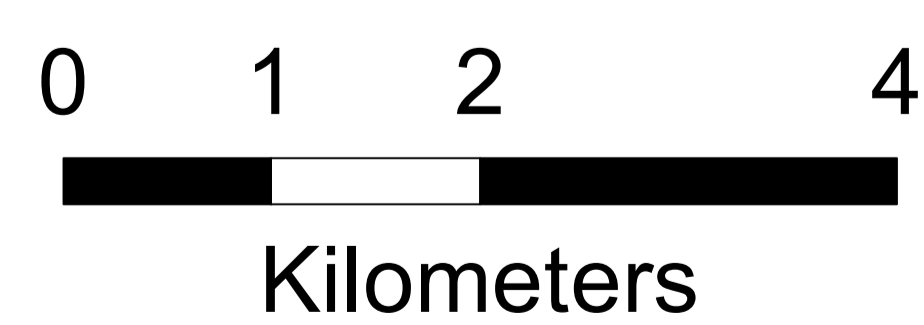
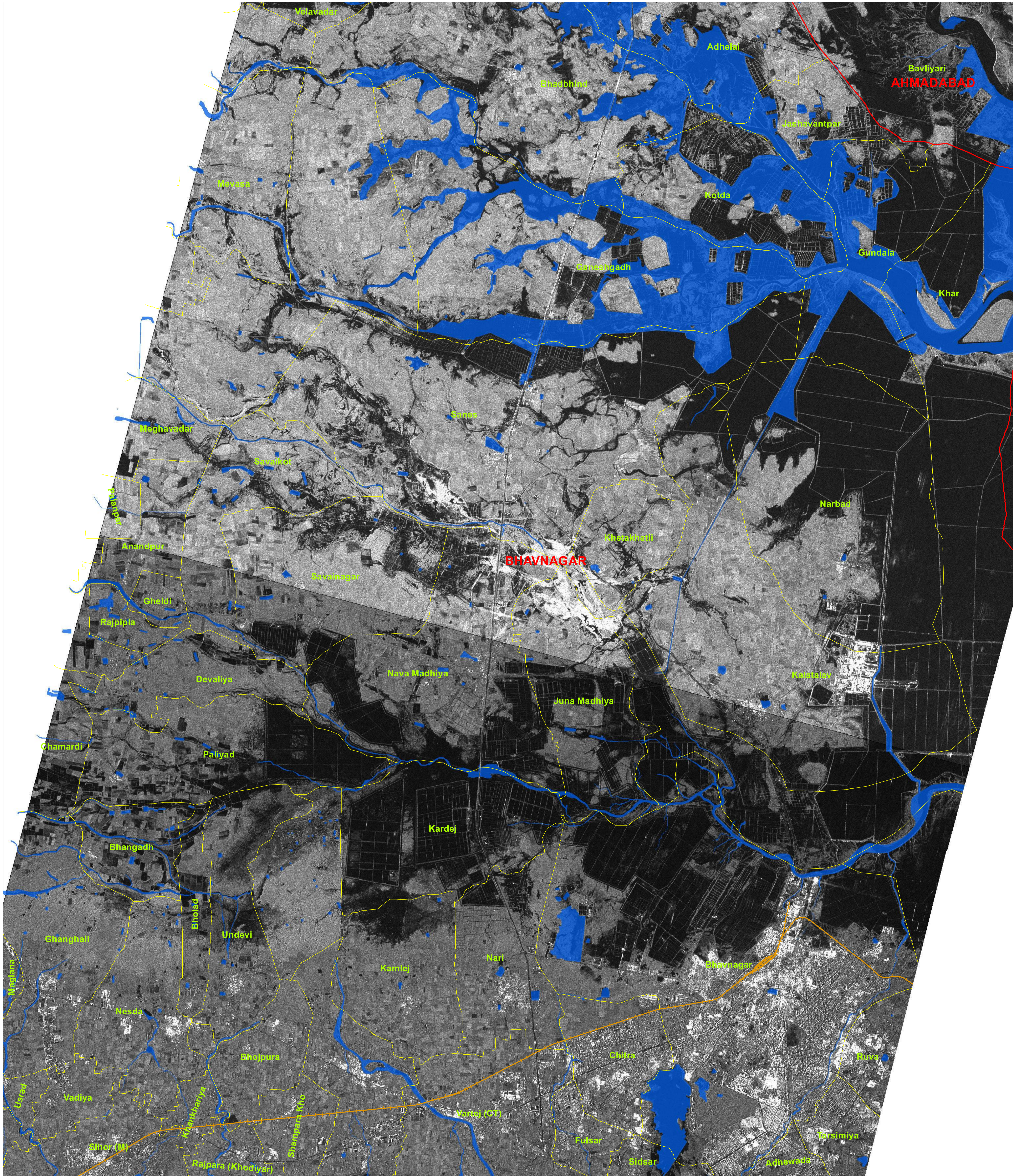
**Reference Data Used**  
NRSC Landuse/Landcover SISDP  
Phase-II Data of 2024, Bhuvan  
Geospatial Legacy Data

Disaster Management Support Group  
Remote Sensing Applications Area  
National Remote Sensing Centre, ISRO  
Dept. of Space, Govt. of India  
Hyderabad- 500 037  
E-Mail: [flood@nrsc.gov.in](mailto:flood@nrsc.gov.in)  
[www.nrsc.gov.in](http://www.nrsc.gov.in)



View of High Resolution Satellite Image from  
RISAT-1A FRS SAR- 30-08-2024 (0600 Hrs IST)

Map ID: 2024/FL/GJ/VAP/3e/30082024  
Date of Issue: 31.08.2024



### Legend

- District Boundary
- Village Boundary
- Railway
- River/Waterbodies (Reference)

Note : Map represents the high resolution microwave satellite image showing rain affected areas which are appearing in dark black colour. This map is self explanatory when it is looked at each village portion, where fields are with standing water after the heavy rain.

### Reference Data Used

NRSC Landuse/Landcover SISDP  
Phase-II Data of 2024, Bhuvan  
Geospatial Legacy Data

Disaster Management Support Group  
Remote Sensing Applications Area  
National Remote Sensing Centre, ISRO  
Dept. of Space, Govt. of India  
Hyderabad- 500 037  
E-Mail: [flood@nrsc.gov.in](mailto:flood@nrsc.gov.in)  
[www.nrsc.gov.in](http://www.nrsc.gov.in)