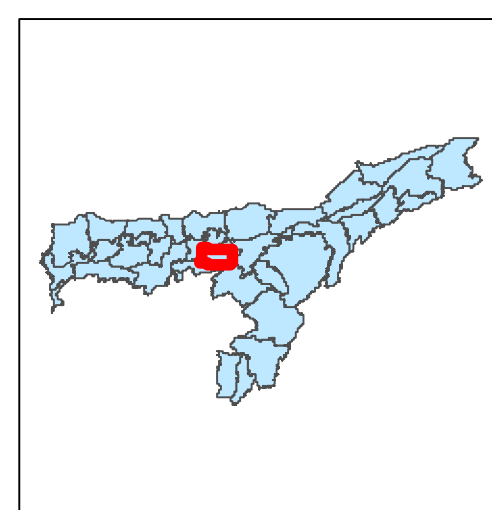
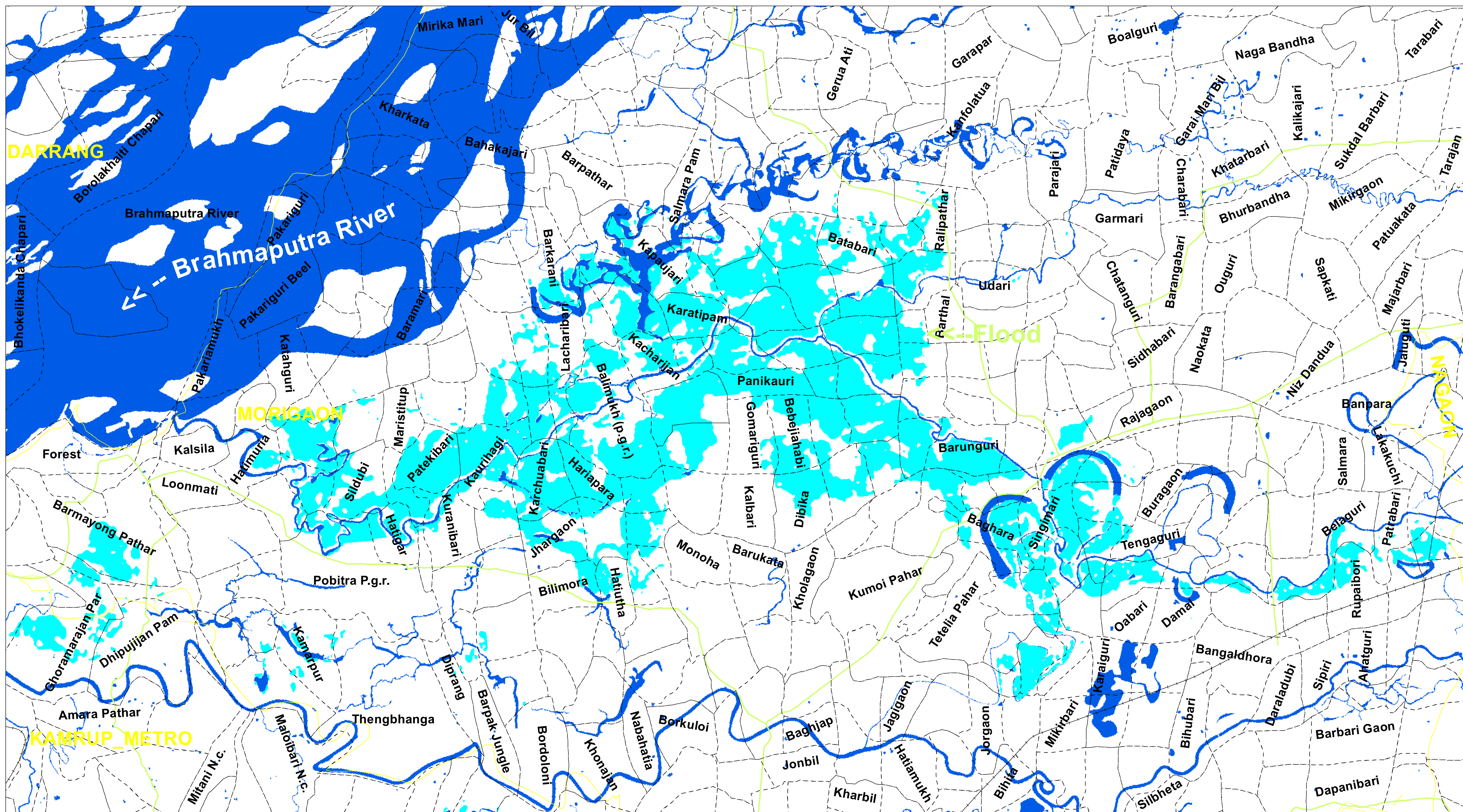


Disaster Management Support Group  
National Remote Sensing Centre, ISRO  
Dept. of Space, Govt. of India  
Hyderabad- 500 037  
E-Mail: [flood@nrsc.gov.in](mailto:flood@nrsc.gov.in)  
[www.nrsc.gov.in](http://www.nrsc.gov.in)



**Flood Inundation Map derived from Resourecsat-2A Satellite Image as on 07-06-2024 - Part of Morigaon District**



0 1 2 4

Kilometers

### Legend

-  Village Boundary
  District Boundary
-  Road Network
  Flood Inundation
-  Rail Network
  River/ Waterbodies

**Map ID:**

2024/FL/AS/VAP/09b/07062024

**Date of Issue:** 08.06.2024

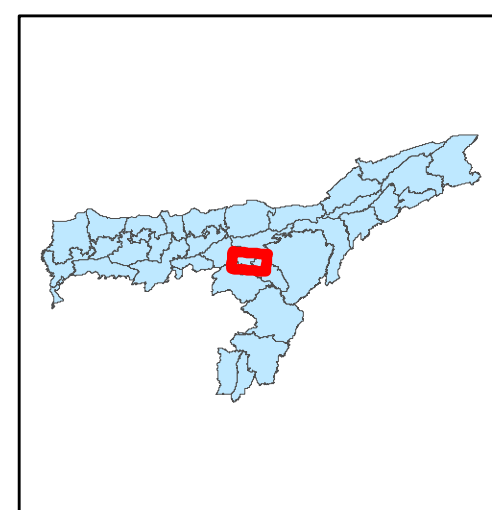
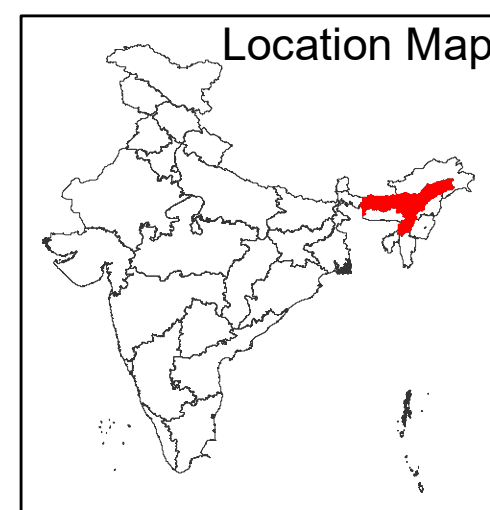
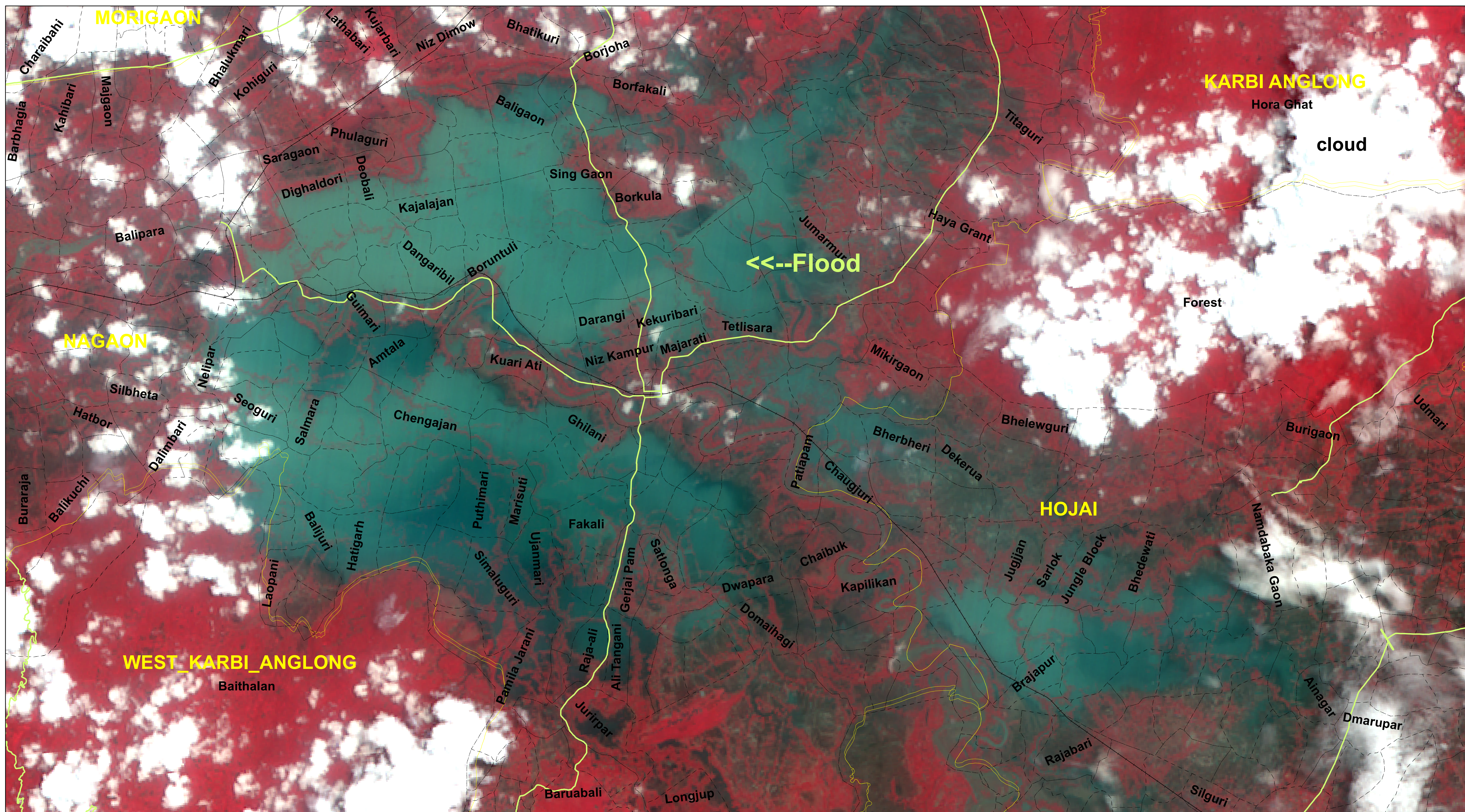
Disaster Management Support Group  
National Remote Sensing Centre, ISRO  
Dept. of Space, Govt. of India  
Hyderabad- 500 037  
E-Mail: [flood@nrsc.gov.in](mailto:flood@nrsc.gov.in)  
[www.nrsc.gov.in](http://www.nrsc.gov.in)

Disclaimer : This Map is prepared on rapid mapping mode for immediate use and sharing amongst official agencies. This provides preliminary results. Flood inundation may include rain water accumulation / flood water in low lying areas. All geographic information has limitations due to the scale, resolution, date and interpretation of the original source materials. No ground verification is done

Citation 'NRSC (2024) - Flood Inundated areas in Part of Assam State (as on 07.06.2024)', Map no : 2024/FL/AS/VAP/09b/07062024, NRSC/ISRO,Hyderabad.



## View of Resourecesat-2A Satellite Image as on 07-06-2024 - Part of Nagaon & Hojai Districts



0 1 2 4  
Kilometers

— Road Network  
- - - Village Boundary  
— District Boundary

Map ID:

2024/FL/AS/VAP/09c/07062024

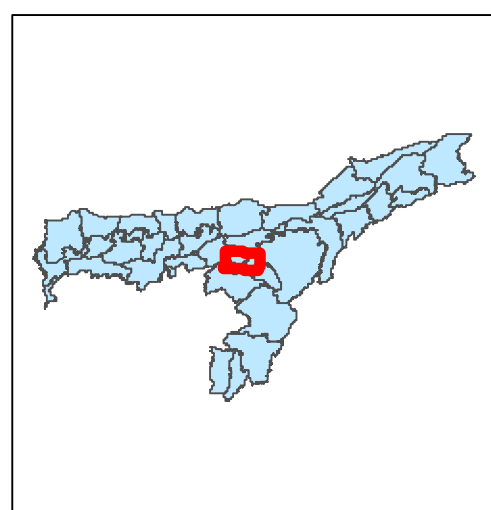
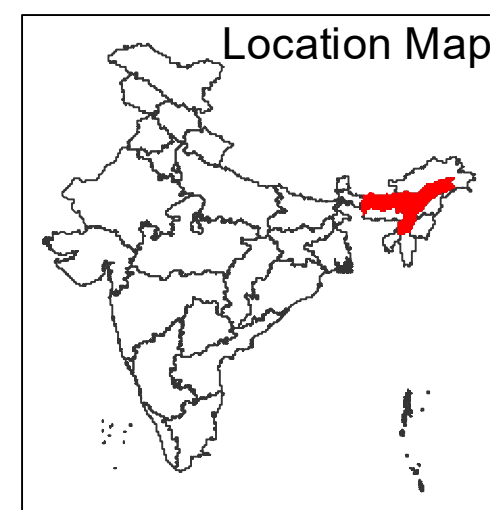
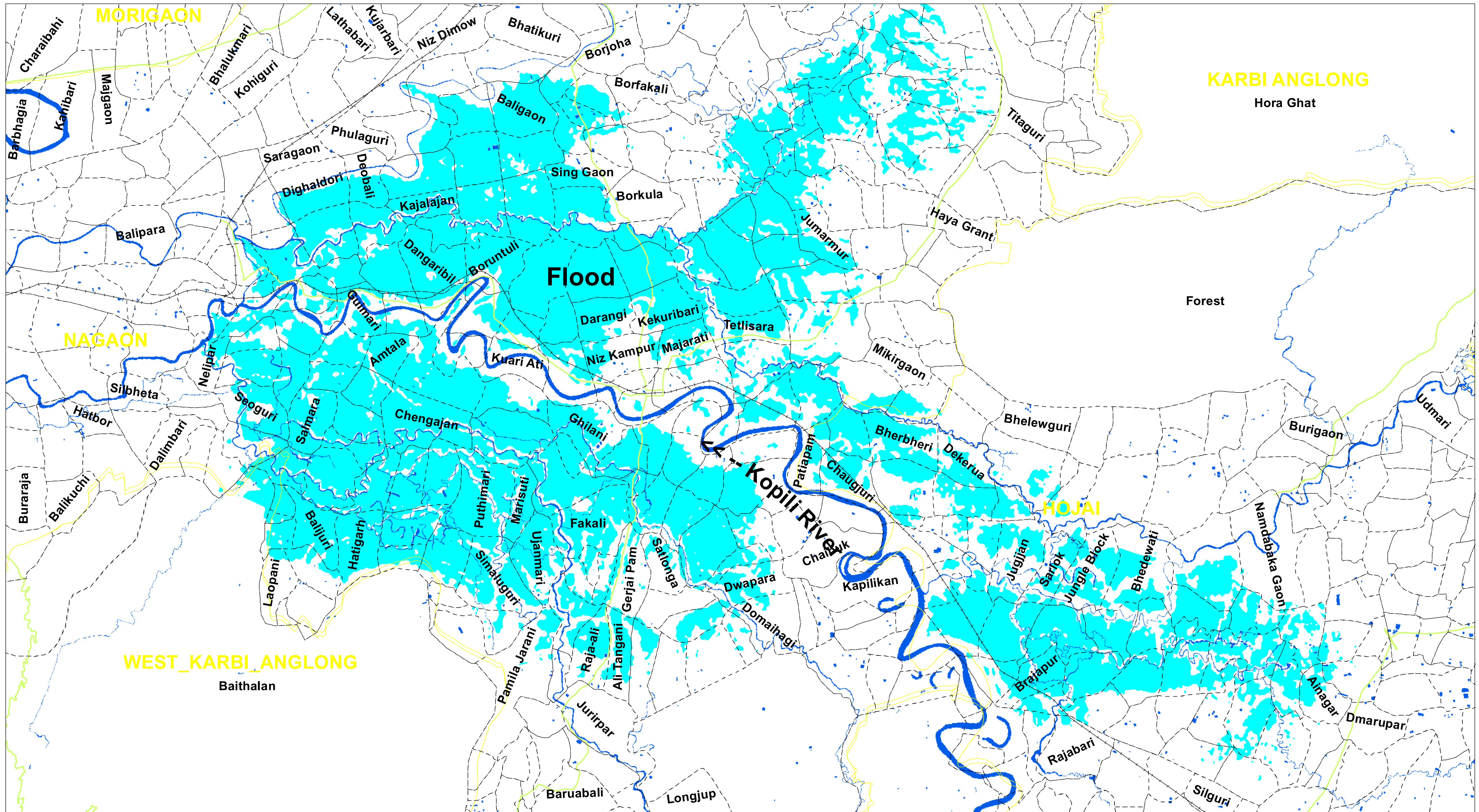
Date of Issue: 08.06.2024

Disclaimer : This Map is prepared on rapid mapping mode for immediate use and sharing amongst official agencies. This provides preliminary results. Flood inundation may include rain water accumulation / flood water in low lying areas. All geographic information has limitations due to the scale, resolution, date and interpretation of the original source materials. No ground verification is done

Citation 'NRSC (2024) - Flood Inundated areas in Part of Assam State (as on 07.06.2024)', Map no : 2024/FL/AS/VAP/09c/07062024, NRSC/ISRO, Hyderabad.

Disaster Management Support Group  
National Remote Sensing Centre, ISRO  
Dept. of Space, Govt. of India  
Hyderabad- 500 037  
E-Mail: [flood@nrsc.gov.in](mailto:flood@nrsc.gov.in)  
[www.nrsc.gov.in](http://www.nrsc.gov.in)





0 1 2 4  
Kilometers

## Legend

- Village Boundary
- District Boundary
- Road Network
- River/ Waterbodies
- Rail Network
- Flood Inundation

## Map ID:

2024/FL/AS/VAP/09d/07062024

**Date of Issue:** 08.06.2024

Disclaimer : This Map is prepared on rapid mapping mode for immediate use and sharing amongst official agencies. This provides preliminary results. Flood inundation may include rain water accumulation / flood water in low lying areas. All geographic information has limitations due to the scale, resolution, date and interpretation of the original source materials. No ground verification is done

Citation 'NRSC (2024) - Flood Inundated areas in Part of Assam State (as on 07.06.2024)', Map no : 2024/FL/AS/VAP/09d/07062024, NRSC/ISRO,Hyderabad.

Disaster Management Support Group  
National Remote Sensing Centre, ISRO  
Dept. of Space, Govt. of India  
Hyderabad- 500 037  
E-Mail: [flood@nrsc.gov.in](mailto:flood@nrsc.gov.in)  
[www.nrsc.gov.in](http://www.nrsc.gov.in)