

Satellite-based study of Manipur Landslide on 30 June 2022



GGD/GSG/RSAA

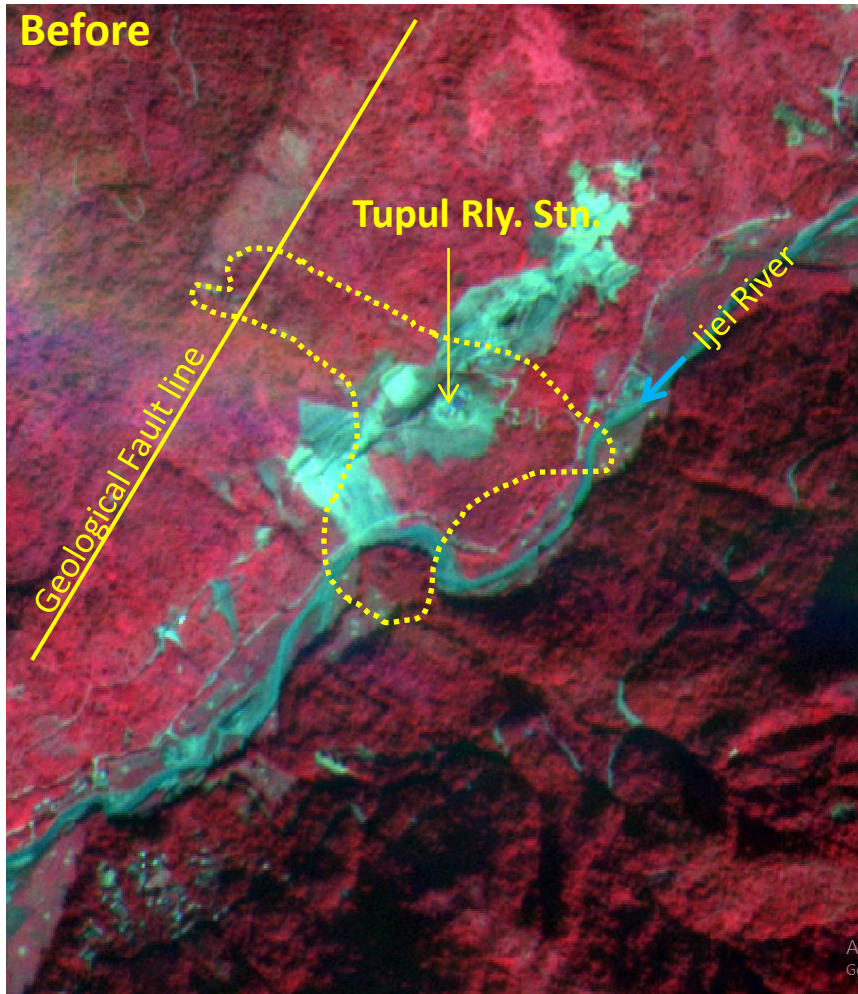
National Remote Sensing Centre

Hyderabad

About the Landslide

- A large landslide occurred near Tupul railway station in the Noney district of Manipur on 30 June 2022.
- This landslide resulted in massive casualty (42 deaths and 20 missing as of now).
- From the geometry of the landslide, it can be inferred that the failure is rotational type and the crown is located in an unstable slope near a fault line. Rock type is mostly sandstone and siltstone.
- The landslide appears to have occurred in an old landslide zone and toe cutting could be the cause of failure.
- Ijei river was blocked temporarily, but it is overflowing now with a small tail reservoir.

Resourcesat-2 LISS IV Mx (19 Dec 2017)



Landsat 9 OLI (04 Jul 2022)

