

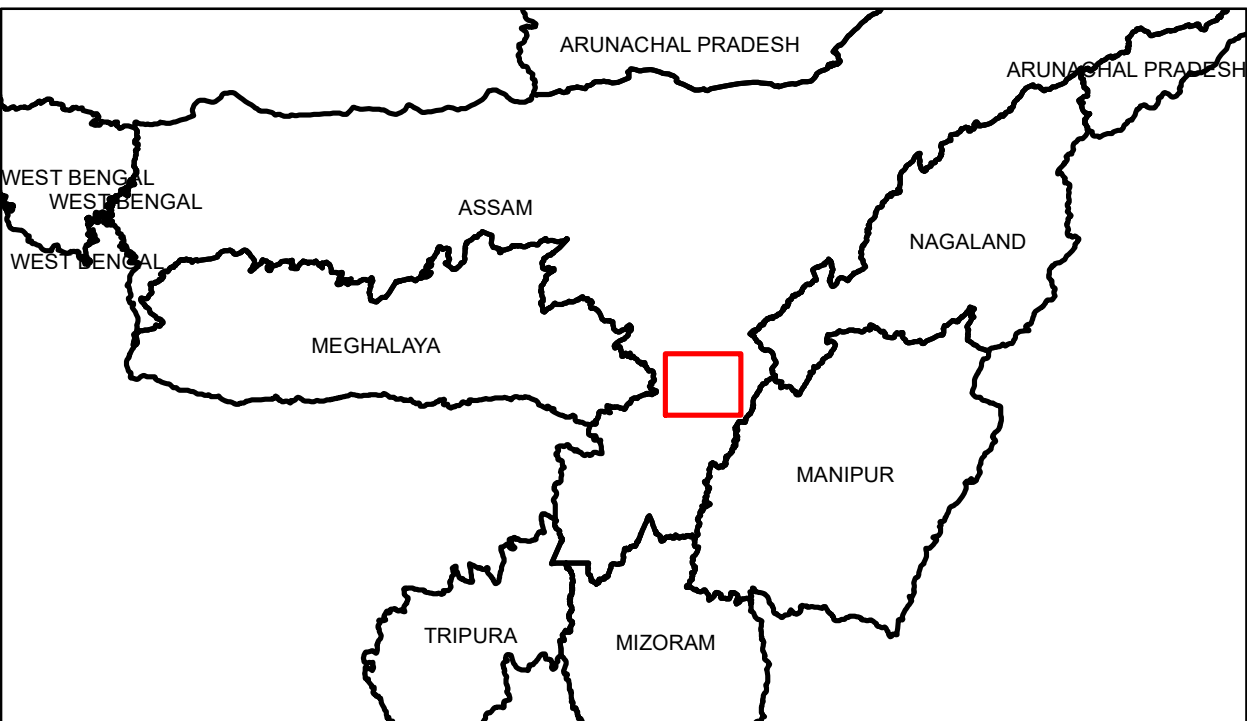
Damage due to Landslides in the Dima Hasao District of Assam (15-16 May 2022)

For official use

DISASTER EVENT ID: 01-LS-2022-Assam
MAP ID: 2022/01

Date of Issue :19.05.2022

Based on the analysis of RS2A and IRS Microwave satellite data



Location Map

About the Event

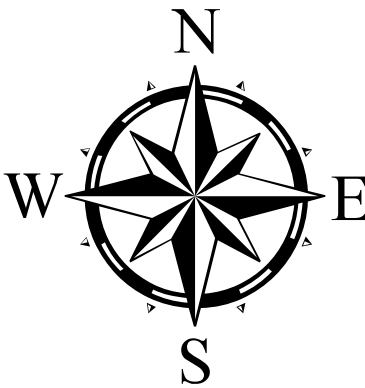
During the 15th and 16th of May 2022, the southern districts of Assam witnessed very heavy rainfall that resulted in widespread floods and a large number of landslides. Initial reports suggest that the worst affected area is the Dima Hasao district where landslides have resulted in damage of villages and railway lines (in at least 26 locations), killing at least 3 people and leaving thousands stranded. Further, Hokai Pungchi, a village 6 km from Dima Hasao district headquarters Haflong, has been severely affected by a major landslide,

Satellite Observations

Post event satellite image from IRS Microwave data , HH polarisation data was analysed in affected region. Preliminary observations suggest that the roads have been damaged at several places due to debris laden flood water. Two sections of Lumding-Silchar road close to New Harangajo railways station, were identified where the road has been damaged due to debris flows

Satellite data used

Pre Event:	Post Event:
Satellite: Resourcesat-2A	Satellite: IRS Microwave
Sensor : LISSIV-MX	Polarisation : HH
Date of Pass: 13-Ferbruary-2022	Date of Pass: 19-May-2022



Legend

- Stream
- Probable location where roads are damaged.

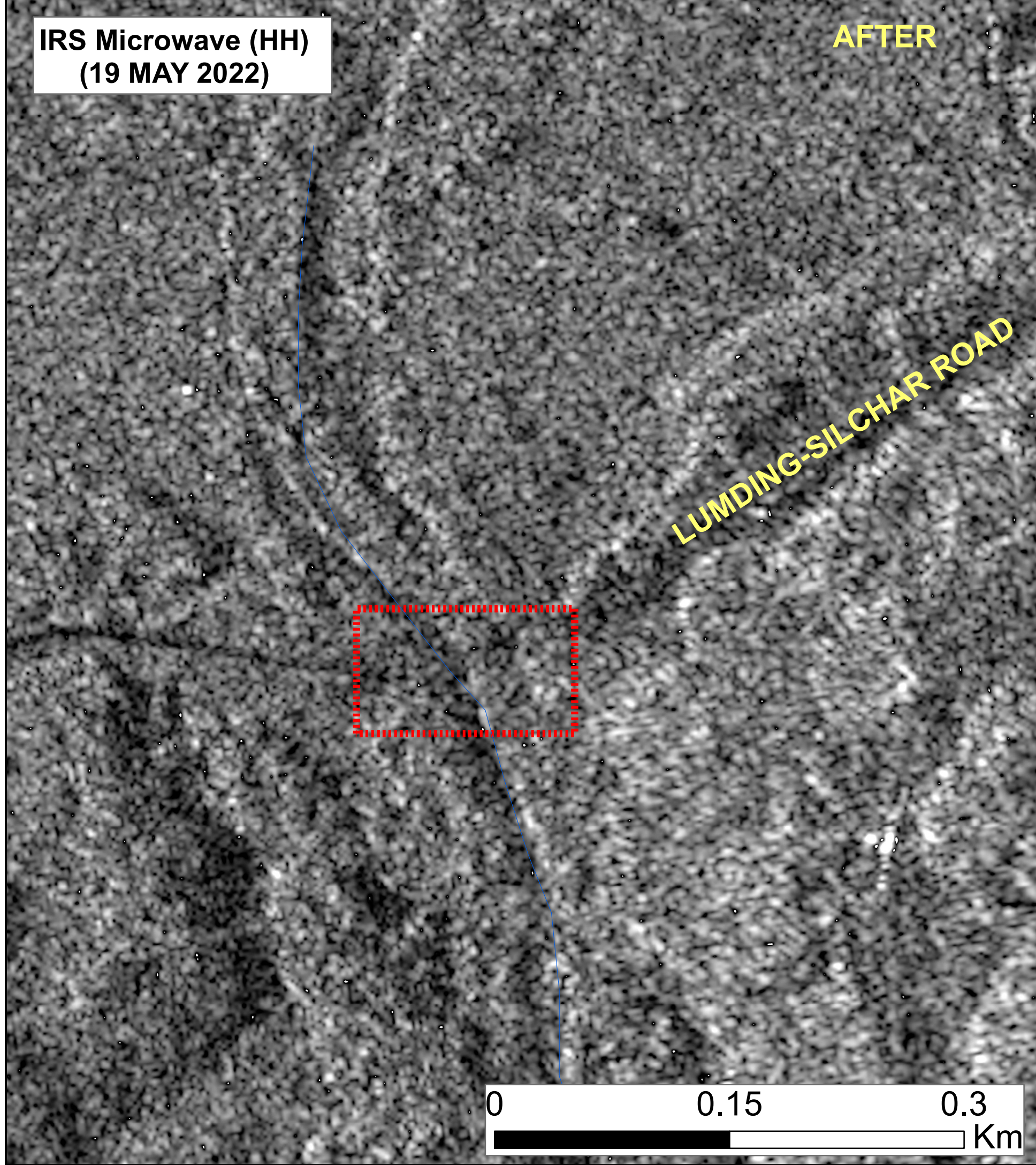
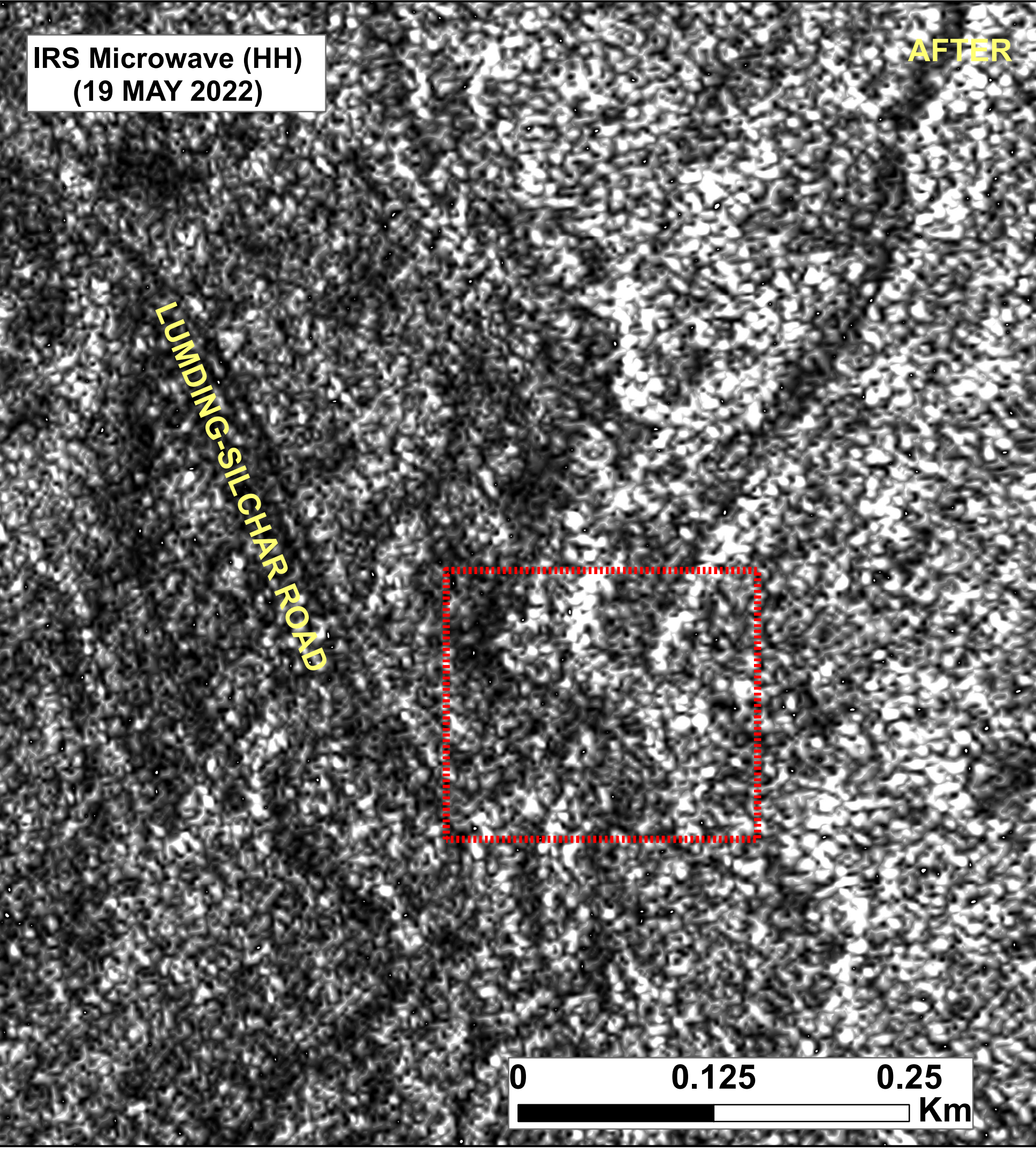
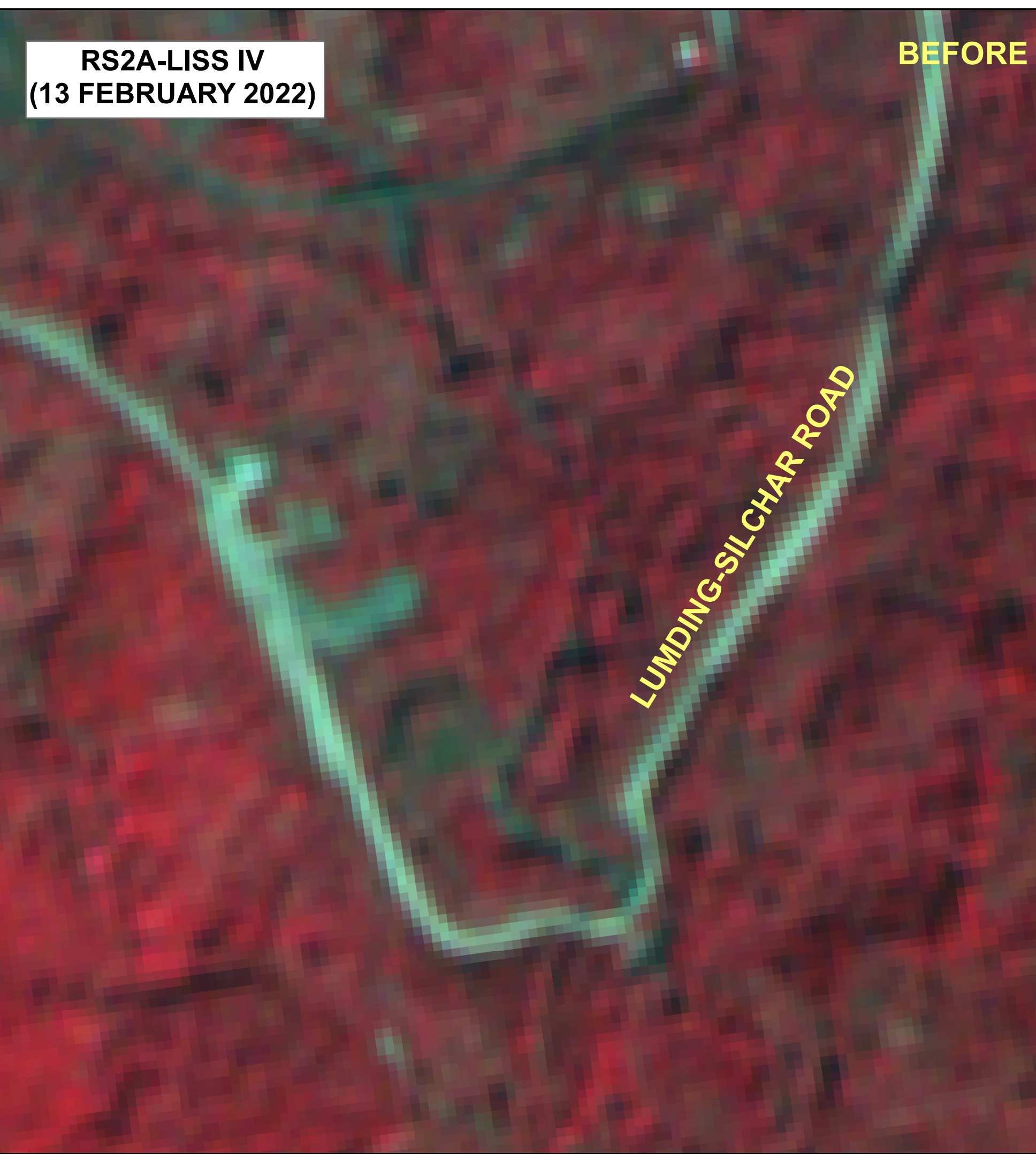
Disclaimer

This product is prepared on rapid mapping mode for immediate use and sharing amongst official agencies. This provides preliminary results. There could be more landslides in this area.

All geographic information has limitations due to the scale, resolution, cloud cover, date and interpretation of the original source materials.

No ground verification is done.

National Remote Sensing Centre, ISRO
Dept. of Space, Govt. of India
Hyderabad- 500 037
E-Mail: dsc_landslide@nrsdc.gov.in
www.nrsdc.gov.in



Note: When publishing this map as part of any report, source may be indicated as "Damage due to Landslides in the Dima Hasao District of Assam (15-16 May 2022)" dated 19.05.2022 Map no : 2022/01, NRSC/ISRO, Hyderabad