

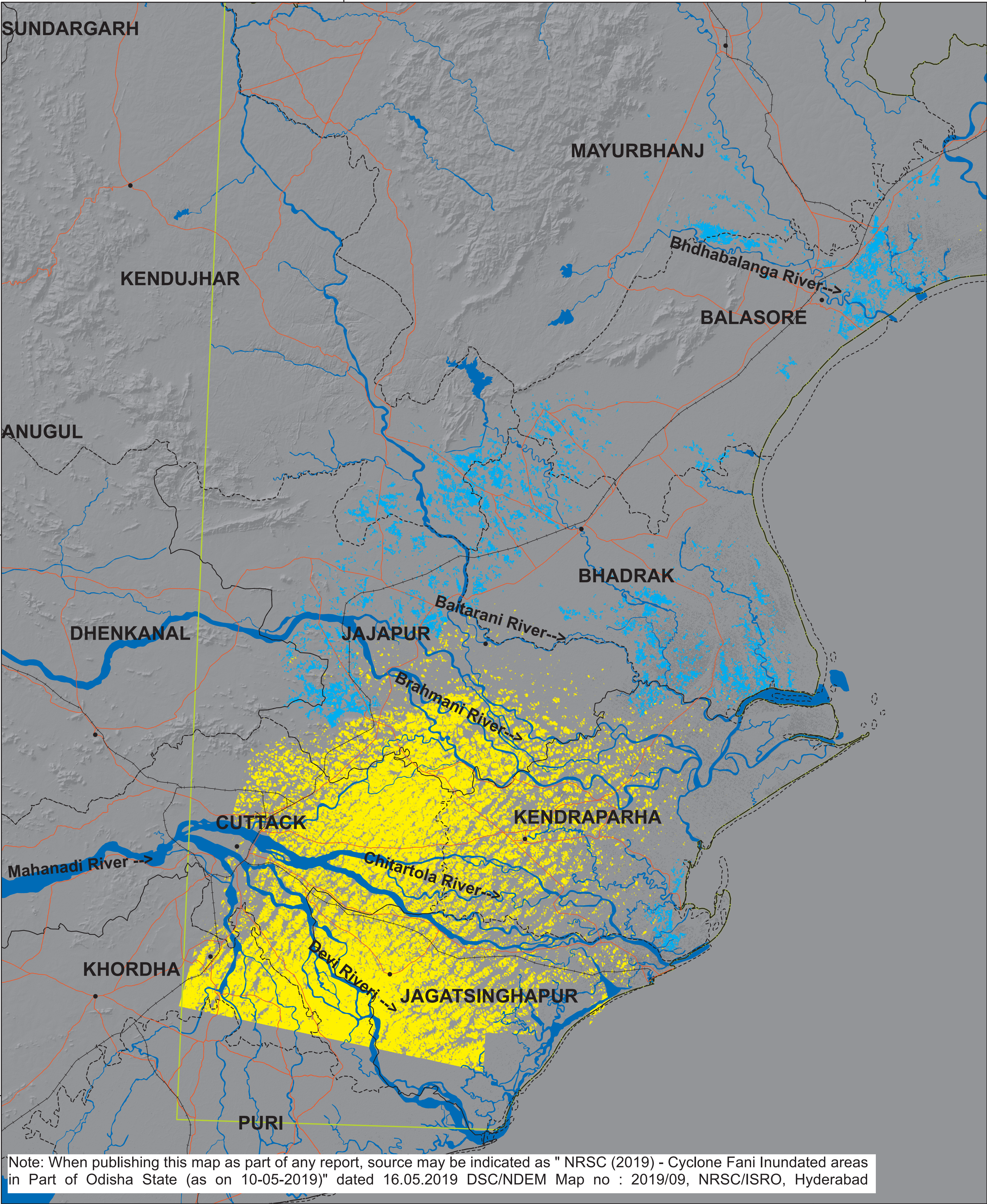
Cyclone Fani Inundated areas in Part of Odisha State

Based on the analysis of CBERS-4 10th May-2019

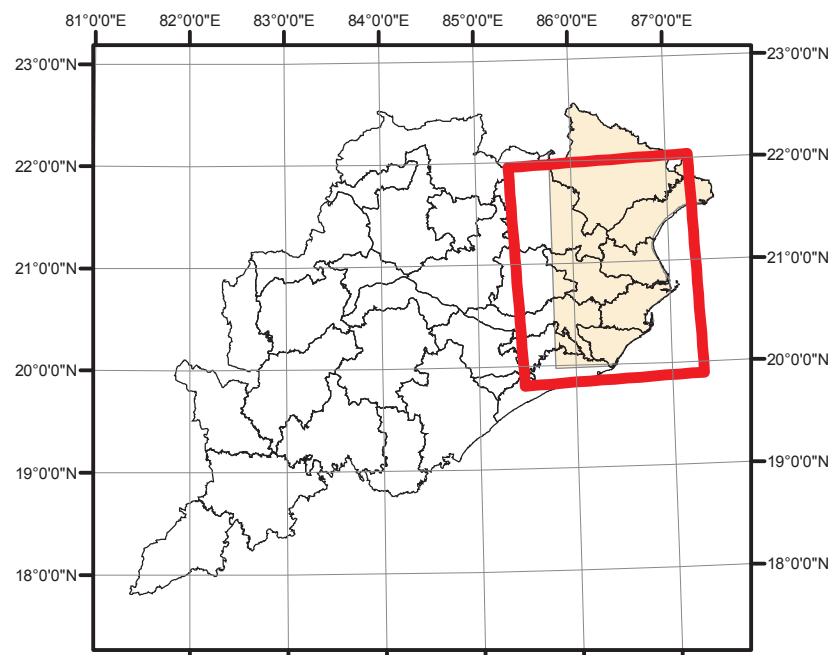
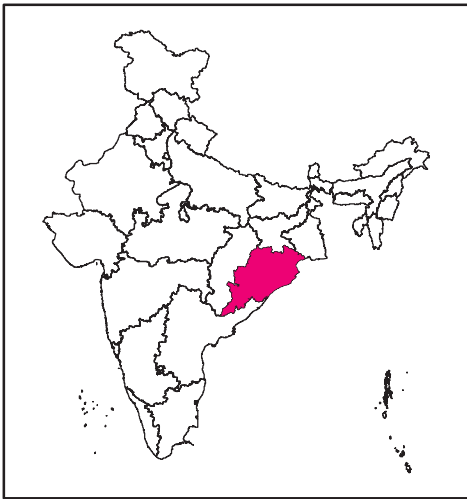
For official use

DISASTER EVENT ID: 1-FL-2019-OD
MAP ID: 2019/08

Date of Issue : 16.05.2019



Location Map



About the Event

Cyclone Fani made a landfall in Puri on Odisha coast on the morning of 3rd May,2019,triggering heavy rainfall coupled with high velocity winds with speed of 185kmph in vast area.Large areas in the seaside pilgrim town of Puri and other places are submerged in water as heavy rains battered the entire coastal belt of Odisha. (Source: News Media)

Satellite Observations

This map highlights the flood inundation in Seven districts of Odisha State as on May 10, 2019.

Satellite data used

Pre Flood:
Satellite: Resourcesat-2
Sensor: AWiFS
Date of Pass: 20-Feb-2019

Post Flood

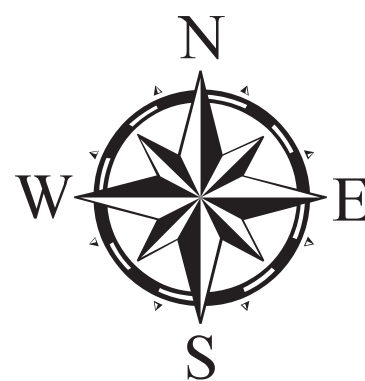
CBERS-4 Image of 10-May-2019

Other data used

NRC Landuse/Landcover Data of 2017-18
Bhuvan Geoportal Legacy Data
Background- Shaded relief data

Legend

- Settlement
- Railway
- Major Roads
- State Boundary
- District Boundary
- Area covered by Satellite
- Flood Inundation
- River / Waterbody
- Cloud cover



0 2.75 5.5 11 16.5 22
Kilometers

This product is prepared using CBERS-4 Satellite images received under International Charter, Call ID-699.



nrsc



DSC / NDEM
National Remote Sensing Centre, ISRO
Dept. of Space, Govt. of India
Hyderabad- 500 037
E-Mail: flood@nrsc.gov.in
www.nrsc.gov.in



nrsc

Note: When publishing this map as part of any report, source may be indicated as " NRSC (2019) - Cyclone Fani Inundated areas in Part of Odisha State (as on 10-05-2019)" dated 16.05.2019 DSC/NDEM Map no : 2019/09, NRSC/ISRO, Hyderabad